

Day	High	Low	Precip.
Monday, Oct. 23	57	47	0.00
Tuesday, Oct. 24	56	49	0.16
Wednesday, Oct. 25	52	49	0.00
Thursday, Oct. 26	55	49	0.00
Friday, Oct. 27	55	49	Trace
Saturday, Oct. 28	57	44	0.00
Sunday, Oct. 29	59	44	0.00

# The Chelsea Standard

QUOTE

God made two great lights; the greater light to rule the day, and the lesser light to rule the night.—Old Testament.

SEVENTY-NINTH YEAR—No. 19

18 Pages This Week

CHELSEA, MICHIGAN, THURSDAY, OCTOBER 31, 1968

10c per copy

SUBSCRIPTION: \$8.00 PER YEAR

## GENERAL ELECTION SCHEDULED NEXT TUESDAY



PAUL F. (JERRY) NIEHAUS

### Paul F. Niehaus Suffers Fatal Heart Attack

Was Enthusiastic Civic Worker For More Than Half A Century

Paul F. Niehaus, life-long Chelsea resident and community leader, died following a heart attack in his home at 209 Jefferson St., Sunday morning.

Niehaus has been an active participant in many phases of community life for more than half a century. He was born May 24, 1891, in Lina township to Friedrich and Katherine Paul Niehaus.

After graduating from Chelsea high school in 1912 he was employed at Chelsea Milling Co. for 10 years, then for two years at the now Schneider's Grocery.

On Oct. 12, 1926 he married Ruth W. Bauerle in Lansing. He accepted a position with the Merchants & Bankers Bank in Chelsea. He became the Chelsea State Bank after a merger in 1927. In 1932 he was appointed senior vice president of the Ford Motor Co. during World War II. He was appointed acting Chelsea manager Sept. 30, 1946 and held that position until Dec. 1949. The following year he became a salesman for Komper Thomas Co. of Cincinnati. In 1951 he returned to the Chelsea State Bank as an assistant cashier, a position he held until retirement June 30, 1955 after 45 years of banking.

Niehaus was a familiar face to young and old Chelsea residents. He was seen as master of ceremonies for many fair entertainment programs and Kiwanis Hall social parties, a position he would have filled tonight.

He was a cornerstone of the Chelsea Kiwanis Club with more than 44 years perfect attendance. He was also a member of the Chelsea Kiwanis Club for 40 years. The Kiwanians held a memorial service Monday night, Oct. 28, at the Rev. John Fall.

He was an active member of the Paul United Church of Christ, where he directed the choir for 40 years, and taught Sunday school. His membership in the church was directed by his church plays to raise funds for the choir.

Niehaus was a past lieutenant of Kiwanis Division 6, which has since merged with Division 10. He served on the Boards of the Portage Trails Boy Scout Council, Michigan Society for Crippled Children and Adults, and Chelsea Community Fair since the first

### Halloween Party Slated For Kiddies

The spookiest night of the year has finally come. Hundreds of Chelsea youngsters will be sporting their new costumes as they knock at doors and collect gobos of goodies from friends, neighbors, and strangers.

Some of the trick-or-treaters will be toting cans for UNICEF collections. The UNICEF charity drive proceeds go to buy medical supplies and other necessities for children who are not as fortunate as themselves. The drive, slated for 5 to 6:30 p.m. to-night, is expected to show an increase in collections over last year, since the drive has been consistently increasing in number of children helping and amount of money they collect.

After trick or treat, children will be meeting at the old junior high school at 7 p.m. for the beginning of the Kiwanis Halloween party. They will be judged, given noisemakers and herded into the street for a kiddies parade through town to the municipal parking lot.

There they will stuff themselves with cider and donuts, courtesy of Kiwanians, receive their awards, enjoy an entertainment program and finally head for home with their night's loot.

### Area Pastor Will Speak at 'Friends' Meet

The Nov. 4 fall meeting of Friends of the Library will feature the Rev. Harry Liang, minister of the First United Presbyterian church in Unadilla since Easter.

In his short time at this church the Rev. Liang has impressed his church members with a very personal approach to his ministry. He was born in Manchuria, entered a Presbyterian seminary in China and was ordained in 1943.

While he was serving at the Manchurian Christian headquarters at Changchun the Japanese surrendered and Russian soldiers began training communist soldiers there.

The Rev. Liang soon involved himself in the 1946 civil war between the Chinese Nationalists, now occupying the island of Formosa, and the Communist Chinese.

Members of the Friends of the Library are expecting to hear inside information about the Communist take-over and siege for the years between that time and the Liangs' departure to Nanking and then Formosa in 1948.

After teaching at the Tainan Theological Seminary from 1948-53, the Rev. Liang, his wife and three children spent nine years at Kobe, Japan, where he attended the university and received his BS degree.

The Rev. Liang came to the United States in 1960, where he attended Harvard Divinity school while his family, with the exception of his oldest son, Clarence, remained in Kobe. The Liangs returned in Bancroft, Neb., where the Rev. Liang accepted a position as minister of a Bancroft church.

(Continued on page five)



COMMUNITY CHEST LEADERS met with members of the residential committee Tuesday night to formulate plans for the door-to-door collections scheduled to begin tomorrow and last through next Thursday. They are, left to right, Mrs. Jack Wellnitz, member of the residential committee; Rolly Spaulding, campaign chairman; Dick Boss, campaign vice-chairman; Mrs. Robert Daniels, Mrs. Albert Sannes, Mrs. William Aldrich, Mrs. Charles Ritter, members of the residential committee.

### Community Chest Home Solicitation Starts Friday

The door-to-door residential community chest campaign is scheduled to begin tomorrow and last until a week from today, according to publicity chairman Mrs. Clifford Eyerla.

At a meeting Tuesday evening final plans were made for the collections within the village limits and for the rural mailings. All Chelsea households will be contacted on one of these two ways. About 40 persons have volunteered their services for this committee and will be personally visiting designated houses in their own neighborhood.

Other committees have no final figures for donations in their individual area, although many report significant donations.

Members of the residential committee, headed by Mrs. Sumner Oesterle and Mrs. Robert Daniels, are Mrs. Robert Schaeffer, Mrs. Winston Boyer, Mrs. Albert Rosenbutter, Mrs. David Strieter, Mrs. Anton Nielsen, Mrs. Albert Sannes, Mrs. Charles Ritter, Mrs. Wilber Warner, Mrs. Ray Lutovsky, Mrs. William Farrell, Mrs. Vernon Otto, Mrs. James Lorenz, Mrs. Charles Popovich, Jr., Mrs. Vincent Burg, Mrs. Elton Guenther, Mrs. Robert Fletcher, Mrs. Charles Hafner, Mrs. Robert Merkel, Mrs. Charles Burgess, Mrs. Robert Hendrick, Mrs. Merle Barr, Jr., Mrs. Tony Bowen, Mrs. Ted Newcome, Mrs. Howard Flintoff, Mrs. Toivo Riihimaki, Mrs. Dean Guenther, Mrs. Dudley Foster, Mrs. Ronald Borders, Mrs. John Dunn, Mrs. Matthew Villeneuve, Mrs. Robert Trinkle, Mrs. Darard Fischer, Mrs. Tom Eisele, Mrs. Ross Scholten, Mrs. William Aldrich, Mrs. Hal Pennington, Mrs. Herbert Hinz, Mrs. Peter Severn, Mrs. Claude Arnett, Mrs. Howard Heschewards, Mrs. Richard Keeber, Mrs. Dorothy Koch and Mrs. Jack Wellnitz.

### Basketball Practice Starts Next Monday

Varsity basketball practice will start Nov. 4 in preparation for the first game Dec. 5 against Dundee. Prospective players are to meet after school Nov. 1 for a preliminary meeting.

Basketball coaches this year will be Tom Ballistrere, varsity; Paul Terpstra, junior varsity; and Jon Schaffner, freshman.

Coach Ballistrere claims that there will be a new look on the basketball courts this fall as the Bulldogs wear black tennis shoes and practice with blue and white balls. The balls will be marked in a way that will enable him to detect spinning while a player practices shooting. These balls will also be used for pre-game warm-ups.

Another change will be the election of a permanent captain at the beginning of the season rather than choosing one at the beginning of each game as in previous years.

The best freshman player will be "promoted" to the varsity team. Basketball fans will have a chance to scrutinize the team at 2 p.m. Nov. 20 with an open scrimmage against Ypsilanti St. Johns.

Coach Ballistrere lists a few prospective team candidates as Lance Burghardt, Doug Weatherwax, Mike Schmidt and Jim Hercules.

### Children's Story Hour Starting at Library

McKune Memorial Library will begin story sessions for three- and four-year-old children—10 to 11 a.m. next Tuesday. Mrs. Russell Bernath will read to children each Tuesday at this time until the end of March.

### BRING ON THOSE DREADNAUGHTS:

### Bulldogs Can Claim Title With Victory Over Dexter

The Chelsea Bulldogs took another step toward a possible Southeastern Conference championship by defeating the Saline Hornets, 14-0, in a game Friday on the Saline field.

Chelsea kicked off to Saline to start the game and John Porter, Roy Holliday and Len Kozma made the opening tackle inside Saline's 20-yard line.

The Hornets ran two plays left and one right with a net gain of only two yards. With the fourth down the Hornets' punter performed poorly and Chelsea took over on Saline's 33-yard line.

The Bulldogs moved for three as Craig Houle carried yard after yard and Kerry Kargel carried for 11. However, three plays later Chelsea was unable to move the ball for a first down.

Tim Orthing came on the field and attempted to kick a field goal from the 31 but the kick went to the right of the goal post and Saline took over on their 20-yard line.

Aided by a 30-yard pass to halfback Day Laskey the Hornets moved to the Chelsea 45-yard line before the Chelsea defense, led by Mike Harvey, Kerry Kargel and Len Kozma forced a Saline punt. Kozma forced did not move the ball and was forced to punt. With Saline in possession and the ball on Saline's 24-yard line, linebacker Tim Colvia intercepted a Saline pass at the Saline 35 and returned it to the Saline 25. Three running plays produced a first down on the 15-yard line. Bulldog quarterback Craig Houle then faked a dive to the left, kept the ball and circled left end for the first touchdown of the night behind the blocking of Dave Conklin, Len Kozma, Richard Bollinger and Greg Stephens.

Tim Orthing kicked the extra point to put Chelsea in the lead, 7-0.

Saline tested the defense as they drove to the Chelsea 35-yard line with 1:25 remaining in the first half. With a first down on the 35, the Hornets took to the air, completing two of four passes for short yardage. With fourth down and six yards to go the Saline quarterback dropped back to throw the rush of Karsten Kargel and Len Kozma jarred the ball loose and Dennis Brown recovered the fumble. The first half closed with Chelsea leading, 7-0.

In the third quarter, the Bulldogs began a 70-yard drive, returning the kick-off to Chelsea's 30-yard line. A ground offense led by Houle and Kargel worked the ball downfield. The drive was momentarily stalled as Chelsea was faced with a fourth and eight on Saline's 35-yard line.

Quarterback Craig Houle dropped back and threw a high pass over the middle which sophomore Jim (Continued on page five)

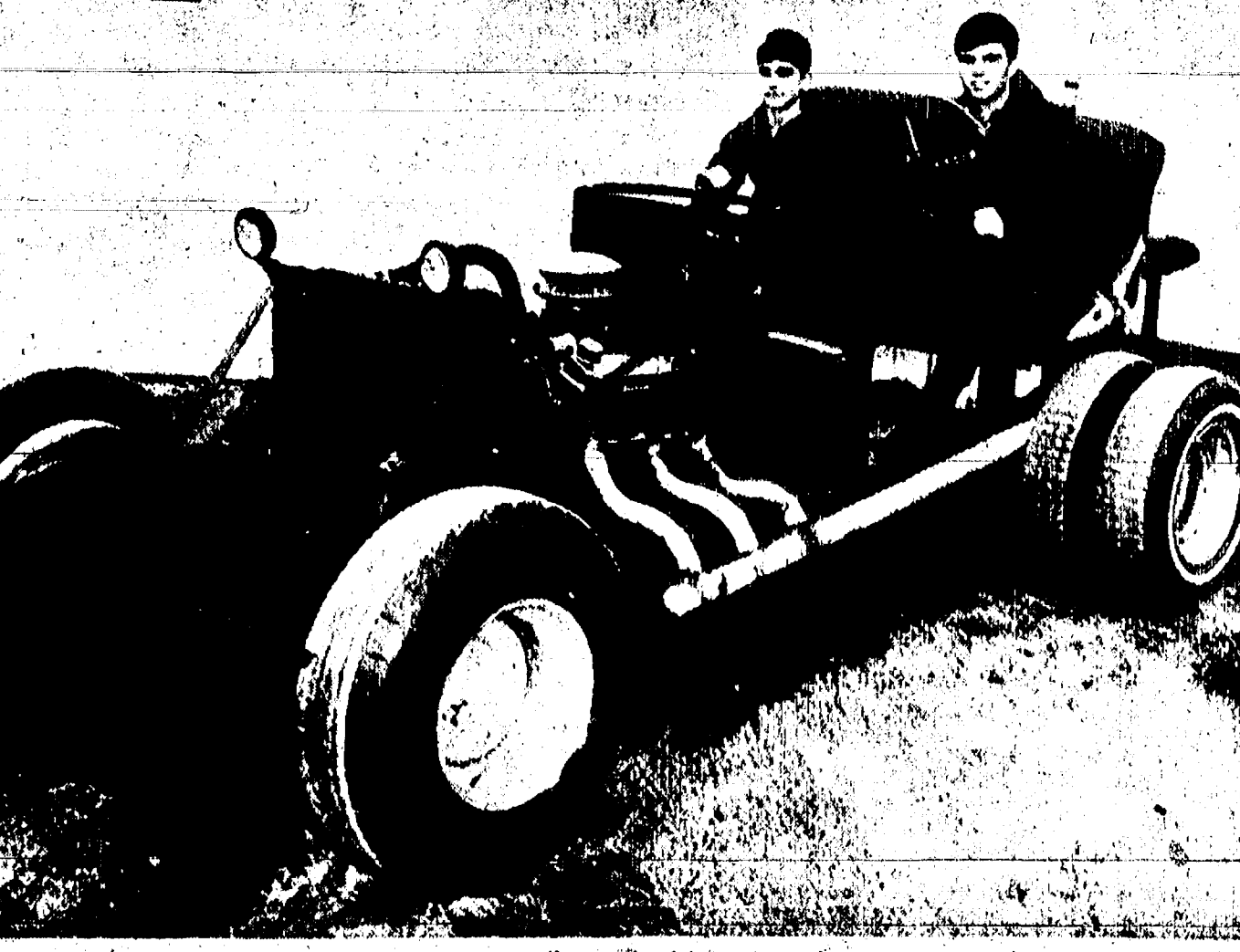
### Pancake Eaters Will Be Welcomed By Kiwanis Club

Chelsea Kiwanians will again serve their delectable, mouth-watering pancakes, with sausage, apple sauce, coffee and milk to Chelsea residents who like pancakes, hate cooking for themselves, would enjoy an evening with friends and neighbors, or would like to help the club raise funds for their myriad of community activities during the coming year.

Tickets may be purchased from any Kiwanian or at the door, and will allow the buyer to eat all he want.

Serving will be 5:30-8 p.m. Monday at Chelsea High school cafeteria.

Proceeds from this annual event go to support Kiwanis area activities.



IT REALLY RUNS! Some fine "Dune Buggy" should be the result of the winter work of five Chelsea teen-agers. They are in the process of building their third dune buggy in the shop belonging to Paul Bollinger, father of one of the young auto builders, Rich Bollinger. Rich, his cousins, Malcolm and Kenny Rhinehart, and Albert Hafley and Steve Brewster are putting together this vehicle, holding Don Bollinger, sixth grader at Beach Junior High school, and brother Rich, a junior at Chelsea High school. It has a 283 fuel-injection Chevy engine with 375 horsepower. The group began three years ago with a 1957 Pontiac which they souped up and painted. The boys took it to northern Michigan on a trailer since it was not road legal. This car was dismantled and used for parts for a second dune buggy that still exists. It also was a 1957 Pontiac, which the boys found to have a good drive shaft and engine. They say that they hope the latest model will be an improvement. It is scheduled for completion before spring.



Established 1871  
**The Chelsea Standard**  
 Telephone GR 5-3631  
 Excellence Award by Michigan Press Association  
 1951-1952-1955-1960-1964-1965-1966  
 Walter P. Leonard, Editor and Publisher



Published every Thursday morning at 300 North Main Street, Chelsea, Mich. 48118, and second class postage paid at Chelsea, Mich., under the Act of March 3, 1879.

## ADDRESS CORRECTION REQUESTED

Subscription Rates (Payable in Advance)  
 In Michigan: One Year \$3.00, Six Months \$1.75, Single Copies \$1.10  
 Outside Michigan: One Year \$4.00, Six Months \$2.25, Single Copies \$1.10  
 Service men or women, anywhere, 1 year \$3.00

NATIONAL NEWSPAPER ASSOCIATION  
 NATIONAL ADVERTISING REPRESENTATIVE: MICHIGAN NEWSPAPERS, INC.  
 257 Michigan Ave., East Lansing, Mich. 48823



**Washington Report**  
 by Congressman  
**MARVIN L. ESCH**

Now that the 90th Congress has adjourned, it is well to review what has actually taken place with regard to the Federal budget. The question of how much to spend, where to set priorities, and where to cut the money was the central issue of the year and an underlying factor in almost all other Congressional action.

In early January President Johnson submitted a proposal for a Federal budget authority of \$201.1 billion. Throughout the year approximately \$5 billion was added to the budget request primarily to support the war in Vietnam and related activity.

It was the overwhelming feeling of the Congress that this budget contained little or no effort to set priorities and that billions of dollars could be saved by cutting back on non-essential expenditures. The President's tax proposal which had been before the Congress for several months was stalled in the House Ways and Means Committee. A member of the President's own Party in an effort to force cutbacks in the budget. At last in mid-summer a compromise was reached and the Revenue and Expenditures Act was approved by the Congress. This legislation raised Federal revenues and at the same time imposed a mandatory cutback of 6 billion on the Federal budget.

In individual appropriations actions throughout the year the Congress cutback budget estimates by \$3.9 billion. The remaining portion of the \$6 billion cutback is required to be cut by the President and Executive Departments in their administration of Federal

programs. A Federal employment ceiling was also imposed. In approving the cutback the Congress was careful to exempt certain vital areas which must receive priority attention of the Nation despite fiscal difficulties. Among these exemptions were education, air traffic control, defense, veterans affairs, and postal operations.

Throughout my term in Congress I have believed that it is essential to set priorities in our spending. We made a good start in the elimination of waste and duplication. At the same time we emphasized a commitment to meet our domestic problems.

More needs to be done both in reorienting priorities and slashing government waste, and it appears that the issue of the budget will continue to play an important part in the year ahead.

### Three March of Dimes Scholarships Offered Washtenaw Students

Three senior high school students from Washtenaw county will be awarded college scholarships, \$500 each, by the Washtenaw County Chapter of The National Foundation-March of Dimes.

The primary consideration for the scholarship is financial need along with academic achievement, personal qualifications and professional promise. Applicants must be accepted by a college or university for their field of study within the State of Michigan. The fields of study include nursing, physical therapy, occupational therapy, pre-medical studies, social work, medical technology and special education.

Ralph J. Scheffler, scholarship chairman for the Washtenaw Chapter, announces that the applications are in the hands of the schools at present. Application deadline is Feb. 26, 1969. Recipients of the scholarships will be announced in March, 1969.

Did you know that 86 men and women in the public schools of Washtenaw county are working with mentally handicapped students?

**MONEY TROUBLE?**  
**ONE PLACE TO PAY**  
 Credit Management Service  
 662-2565  
 342 Municipal Court Bldg., Ann Arbor  
 State Licensed and Bonded

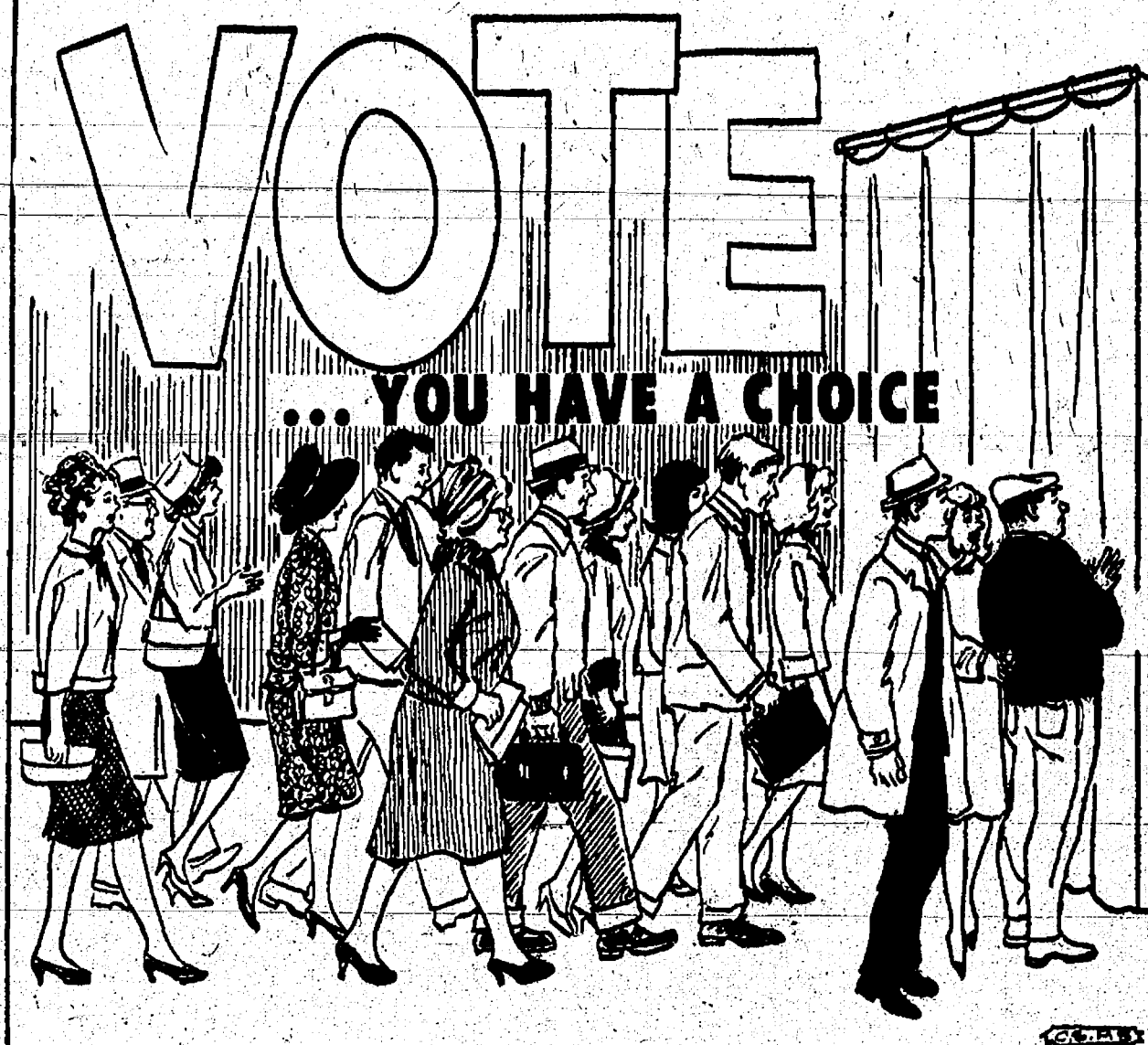
## Pre-Christmas SAVINGS ON ALL FURNITURE & APPLIANCES

Our showroom is loaded with the latest styles in fine furniture and appliances. Our problem is that we have more merchandise being shipped and we have no space to display it. You can help us and yourself by coming in now and taking advantage of special price concessions being made to clear our floor space.

For the Finest Selection and Best Buys in Furniture and Appliances See Us Today!

**MEABON'S TV, FURNITURE & APPLIANCE**  
 1170 M-52 South, Chelsea Phone GR 5-5191

## YOU HAVE AN OBLIGATION...



## ★ MICHIGAN MIRROR ★

By Elmer E. White, Secretary, Michigan Press Association

### Faulty Forecast

It didn't hold up; the forecast that draft law changes would cause a big drop in graduate school enrollments in Michigan this fall.

Officials at Michigan State University, the University of Michigan and Wayne State University report graduate student numbers are down only slightly from last year.

U-M enrollment is 8,337, a decrease of three percent from 1967's fall term. MSU has 7,700 students on hand this autumn, about the same as last year. Wayne State reports little change.

Col. Arthur A. Holmes, state selective service director, said the predictions of a mammoth decline didn't come true because:

Deferments were issued to students, married before Aug. 26, 1965; married students with children; and students over 26 years old.

Voluntary enlistments, mostly among last June's high school graduates, filled up draft quotas. Smaller than anticipated draft calls for Michigan during September and October.

"A great hue and cry went up from graduate schools when the new policy on draft deferments was announced," Col. Holmes said. "Some educators predicted enrollment drops of 40 percent, but it just didn't happen."

Last February military draft deferments were eliminated for all but medical and ministry graduate students. Previously a college graduate could be deferred for advanced study without qualification.

College officials say they are still concerned about the future impact of the law change on graduate enrollments.

"Right now our situation looks good on paper," said an MSU spokesman. "However, I suspect it will change by January or February."

ruary if the calls go up and the draft boards begin dipping down into the graduate schools."

### Big Job

Choosing leaders by periodic election may be a good political system, but it is also a costly one, says Michigan's chief elections official.

Secretary of State James M. Hare says the expense of printing the ballots alone runs to more than \$500,000. Heaped on top of that are the \$15 million worth of voting machines the state owns, and the money which must be paid to persons working at the 5,383 precincts.

"If you take a conservative estimate of just five persons working at each polling place and an equally conservative estimate of pay based on \$15 a day, this item alone amounts to over \$400,000," Hare said.

Nearly 90 percent of Michigan's voters will cast their ballots on voting machines in the Nov. 5 election, the secretary of state estimates.

The most recent registration figures show 3,333,803 eligible voters in the state, of whom 2,338,120 live in precincts with machines.

The state has 4,067 machine precincts and 1,316 which use the paper ballots, Hare added.

Only four of the state's 83 counties—Bay, Ottawa, Muskegon and Kalamazoo—have completely converted to machines. But Hare says that 31 counties are more than 50 percent converted and 66 counties have at least one machine.

### Graduated Tax?

Atty. Gen. Frank J. Kelley says the constitutional amendment for a graduated income tax in Michigan is not self-executing. He says a sliding-scale tax could only be levied with the authorization of the legislature.

Presently the Michigan Constitution restricts the state to a flat-rate income tax. State law limits all cities, except Detroit, to a one percent levy on residents, and one-half of one percent on non-residents.

The amendment would remove the constitutional prohibition against villages, charter townships and school districts levying an income tax, according to Kelley.

He added, however, that before any of these political units could impose an income tax, graduated or fixed rate, they would need permission from the legislature.

Gov. George Romney is opposed to a graduated income tax in Michigan. He says the federal government has pre-empted this field.

The state tax rate now is 2.6 percent on personal earnings, and 5.6 percent for corporations.

### Saline Woman Heads Girl Scout Area Association

Mrs. Carl J. O'Brien, 207 S. Ann Arbor, Saline, has been appointed chairman of the newly formed Western Washtenaw Area Association of the Huron Valley Girl Scout Council.

Her appointment was announced today by Mrs. Kenneth Hulsing of Plymouth, council president, after its approval by the board of directors last week.

In the newly-formed post, she heads up what was formerly the three neighborhoods of Chelsea, Dexter and Saline.

As area association chairman, Mrs. O'Brien will be the principal Girl Scout representative for the Western Washtenaw county area and will be responsible for establishing all local community relationships, conducting meetings of the 175 adults in the association, planning for the development of broader opportunities of Girl Scouting in the area, and serving as a delegate to the council.

With the elimination of the neighborhood chairmanships, some duties, such as direct services to troops, will go to troop services directors. Local Troop Services Directors are: Mrs. Robert Beauchamp, Mrs. Charles Lamberson and Mrs. James Tripp in Saline; Mrs. Charles Mattoff and Mrs. Carner Slocum in Chelsea; and Mrs. James Warden and Mrs. R. A. DeLong in Dexter.

Mrs. O'Brien has been a Girl Scout volunteer for five years and has served in many capacities, including troop committee and troop cookie chairman.

In other community work, she is active in the Elementary Parents Association, Saline Area Advisory Council and the Saline Study Club. She formerly was President of the Saline Play Center and the Saline Child Study Club.

### FREE FUNERALS

Milan, Italy—The communal council of Milan has ruled that the city will pay for all funerals whether the family is rich or poor. The costs would be included in the city budget and will pay for coffin, hearse, burial and transportation of relatives.

### Howell

**Livestock Auction**  
 Every Monday at 2 p.m.

Southeastern Michigan's largest and most complete Auction Market.

For Trucking Information Call Howell 545-2470

## JUST REMINISCING

Items Taken from the Files of The Chelsea Standard

### 4 Years Ago...

Thursday, Oct. 29, 1964—Announcement was made by J. D. Hogan, general manager of the Ann Arbor District of Michigan Consolidated Gas Co. that M. W. "Mac" McClure, manager of the Chelsea office is retiring as of tomorrow. He said that "Mac" and his wife, Hilda, both well known in Chelsea, have worked faithfully for the Michigan Consolidated Gas Co. since August, 1948.

Next Tuesday, Nov. 3, voters will face a man-sized ballot and must vote on federal, state and township candidates as well as members of the State Board of Education and non-partisan Judges for the new court of appeals. Lima township voters will express their wishes regarding the sale of liquor for consumption on the premises.

Jack Merkel became a casualty of the current football season while playing with his sons Saturday. He was moving backwards and stumbled, falling on the cement sidewalk and breaking his left arm in two places.

Mr. and Mrs. Roy Greenleaf were to leave yesterday for San Antonio, Tex., where they will remain until next April. Mrs. Greenleaf's sister, Nadine Packard, accompanied them and will spend the winter there.

University Microfilms, Inc. of Ann Arbor, began constructing a \$1.1 million plant near Zeeb and Pratt Rds. and I-94 in Selo township. Ground was broken early this month. Eugene B. Power, founder and president of the company says it will be "the most modern and complete microfilm laboratory in the world."

In a non-league game Friday night the Stockbridge Panthers were the victors, taking the game from the Chelsea Bulldogs by 12-3. Chelsea scored first in the third quarter—a 25-yard field goal by Gary Dresch. Sparked by linebacker Oren Wireman, the Bulldogs had held the Panthers helpless in the first half.

A poultry school for interested poultry raisers in Lenawee, Monroe, Washtenaw and Wayne counties will be held each Tuesday in November.

A Washtenaw county 4-H'er has been awarded one of the highest awards given in the Michigan 4-H program. Kay Diane Gordon, 17, of Saline has been given a wrist watch for her excellent record in the Dairy Foods project by the Cnatrion Co. of Los Angeles.

Charles S. Cameron was elected 1955 president of the Kiwanis club at the meeting Monday evening. Other officers elected to serve with him are: Paul Mann, first vice-president; John Alber, second vice-president; James Liebeck, treasurer; and John Griffin, William Collins, Luther Kusterer and William Rademacher, directors. Anton Nielsen was chairman of the nominating committee.

A "kick-off" luncheon at the Congregational church at noon Monday for all campaign workers will officially open Chelsea's first

Community Chest Drive. Lowell Davidson and Alfred Mayer are co-chairmen for the campaign. Goal has been set at \$9,000.

Alman Third Class Donald Eugene Rowe is now studying radar aircraft control at Keesler AFB in Mississippi. A graduate of Chelsea High school, he enlisted June 23 and was sent to Sampson AFB at Geneva, N.Y. for his basic training.

The Chelsea Bulldogs won their third consecutive game as they defeated U. High, 32-12, last Friday night. The Bulldogs' record is now four wins and two defeats.

Raja Naser of Beirut, Lebanon, a graduate student at the University of Michigan, was guest speaker at the Friends of the Library meeting Monday evening. In June he will have completed two and one-half years of study in linguistics and education and expects to return to Beirut to teach in the American University.

Mr. and Mrs. Roy C. Ives left Tuesday to spend the winter in Bradenton, Fla. Enroute they plan to visit their son, Raymond Ives, and family in Geneva, Va.

Henry Shumaker, whose 88th birthday occurred Monday, observed the occasion at a family dinner Saturday evening at the Shumacher home, on South Main street, where he and his sister, Minnie, are living.

Winners of the baby contest sponsored by Herbert J. McKune Post No. 31 American Legion, are Danny Uffig, LuAnn Stricker, Chuck Patrick and Tyleno Walz.

There will be no gasoline car owners for deer hunting, officials of the OPA Regional Office in Cleveland has announced. "Patriotism should cause hunters to be more than willing to pass up hunting trips this year," said Birkett L. Williams, Regional OPA Administrator.

Thursday, Nov. 1, 1964—Washtenaw county budget and welfare problems were matters (Continued on page five)

Friday, initiation day, the students of Chelsea High gathered together in study hall as is their yearly custom to see the poor abused freshmen parade around in their initiation day clothes. The girls wore long stockings, short slippers and ropes around their waists. Their hair was on curlers and pins. The boys wore pajamas, short sleeve sweaters, flip-flop slippers and ribbons. They looked dazed.

Sgt. Geo. F. Parish, Jr., Lansing, who had been on active duty in the Aleutians for the past 28 months, and who spent the week-end with his parents, Mr. and Mrs. Geo. F. Parish, Cassidy Lake, spoke briefly at the Kiwanis meeting on Monday evening.

Tuesday evening the pupils of Freer school held their Halloween party. Each of us asked one of the two guests. First of all, Robert Lawie took us on a hayride. About 60 neighbors and friends of Mr. and Mrs. John Young assembled at Jordan Tann-Hall Monday evening to honor them with a farewell party before their departure for Chelsea, where they will make their home. An enjoyable time was spent with cards furnishing the diversion. Mr. and Mrs. Young, who have been life-long residents of Lyon, Ky., are moving this week to the Merkel apartments at 140 Oakdale.

The "Kiddies" annual Halloween party sponsored by the Kiwanis club was very successful from a standpoint. Dr. Russell Huber opened the program with a short talk about the origin of Halloween. P. F. Niehaus then announced the winners for the categories of costumes. They were most original (Maple Leaves) Sally Walz; Next (Paiety) Sally Ann Vogel; Spookiest (Scarecrow) Bill Moody.

There will be no gasoline car owners for deer hunting, officials of the OPA Regional Office in Cleveland has announced. "Patriotism should cause hunters to be more than willing to pass up hunting trips this year," said Birkett L. Williams, Regional OPA Administrator.

Thursday, Nov. 1, 1964—Washtenaw county budget and welfare problems were matters (Continued on page five)

Thursday, Nov. 1, 1964—Washtenaw county budget and welfare problems were matters (Continued on page five)

Thursday, Nov. 1, 1964—Washtenaw county budget and welfare problems were matters (Continued on page five)

### 24 Years Ago...

Thursday, Nov. 3, 1944—

Midshipman Roderick P. MacDonald, son of Mr. and Mrs. R. P. MacDonald of Detroit, formerly of Chelsea, was among 1350 men commissioned as Ensigns, United States Naval Reserve, in ceremonies held Oct. 28 in the Cathedral of St. John the Divine, New York. The group was the 20th class to be graduated from this oldest and largest Naval Reserve Center.

Thursday, Nov. 1, 1964—Washtenaw county budget and welfare problems were matters (Continued on page five)

Thursday, Nov. 1, 1964—Washtenaw county budget and welfare problems were matters (Continued on page five)

Thursday, Nov. 1, 1964—Washtenaw county budget and welfare problems were matters (Continued on page five)

Thursday, Nov. 1, 1964—Washtenaw county budget and welfare problems were matters (Continued on page five)

Thursday, Nov. 1, 1964—Washtenaw county budget and welfare problems were matters (Continued on page five)

Thursday, Nov. 1, 1964—Washtenaw county budget and welfare problems were matters (Continued on page five)

Thursday, Nov. 1, 1964—Washtenaw county budget and welfare problems were matters (Continued on page five)

Thursday, Nov. 1, 1964—Washtenaw county budget and welfare problems were matters (Continued on page five)

Thursday, Nov. 1, 1964—Washtenaw county budget and welfare problems were matters (Continued on page five)

Thursday, Nov. 1, 1964—Washtenaw county budget and welfare problems were matters (Continued on page five)

Thursday, Nov. 1, 1964—Washtenaw county budget and welfare problems were matters (Continued on page five)

Thursday, Nov. 1, 1964—Washtenaw county budget and welfare problems were matters (Continued on page five)

Thursday, Nov. 1, 1964—Washtenaw county budget and welfare problems were matters (Continued on page five)

Thursday, Nov. 1, 1964—Washtenaw county budget and welfare problems were matters (Continued on page five)

Thursday, Nov. 1, 1964—Washtenaw county budget and welfare problems were matters (Continued on page five)

Thursday, Nov. 1, 1964—Washtenaw county budget and welfare problems were matters (Continued on page five)

Thursday, Nov. 1, 1964—Washtenaw county budget and welfare problems were matters (Continued on page five)

Thursday, Nov. 1, 1964—Washtenaw county budget and welfare problems were matters (Continued on page five)

Thursday, Nov. 1, 1964—Washtenaw county budget and welfare problems were matters (Continued on page five)

Thursday, Nov. 1, 1964—Washtenaw county budget and welfare problems were matters (Continued on page five)

**CLIP THIS COUPON**

**Interested in Saving Money?**

**Beat the high cost of living...**

Take this coupon to our store and receive an additional 10% CASH SAVINGS on all your health needs. This cash savings is in addition to our EVERYDAY LOW PRICES. Use this valuable coupon and save money.

"Where Price and Quality Meet"

**REGENCY DRUGS**

ANN ARBOR: 123 E. LIBERTY (at 4th)  
 CHELSEA: 775 S. MAIN  
 (In Chelsea Medical Center)

(This offer expires Nov. 30, 1968)

## FACTORY-TO-YOU PRICES!!

- ★ WALL PANELING
- ★ SUSPENDED CEILINGS
- ★ KITCHEN CABINETS
- ★ MOULDINGS
- ★ ROOF TRUSSES
- ★ FLOOR TILE
- ★ FIR PLYWOOD
- ★ PLASTIC BATHROOM PANELS
- ★ DOORS
- ★ COUNTER TOPS
- ★ LUMBER
- ★ CEILING TILE
- ★ SHINGLES
- ★ HARDWARE, ETC.

## LUMBER - PLYWOOD AND PANELING at GIANT SAVINGS

PRE-FINISHED VINYL COATED  
**4' x 6' to 4' x 8' Paneling \$1.50 ea.**

## DEXTER PLYWOOD FACTORY OUTLET

(Division of Tecumseh Plywood)  
 7444 Ann Arbor Road Telephone 426-4738 Dexter, Michigan  
 Former Location of Al Gross Ford Sales & Service  
 Open Daily 8:30 a.m. to 5:30 p.m. Open Sundays 11 a.m. to 3 p.m.

## Uncle Lew from Lima Says:

### DEAR MISTER EDITOR:

The fellows at the country store Saturday night took note that we was about to wind up another exercise in democracy on November 5, and they was agreed it can't end too soon to suit everybody concerned. Clem Webster of the Great Society said he had heard so many charges by the Republicans that you wouldn't think they was a single honest Democrat holding office in this country.

Ed Doolittle, that claims one Democrat Administration can do more damage than all seven of them plagues in the Bible said the Republicans in this campaign has got to fight fire with fire.

But Zeke Grubb spoke up, Mister Editor, and allowed as how he felt sorry for both sides, the ins that want to stay in and the outs that want to get in. When you stop to look at what a man will go through to get in public office, said Zeke, you don't wonder that when he gets there he expects more than he gits.

Consider a feller running for Congress, Zeke said. Not matter what part of the country he lives in, he is lucky to get through a campaign without food poison. A candidate has got to eat some of

everybody's food as many as 10 times a day and more than likely he had a ulcer to start with. He's got to love the barbecue seasoned fit to melt a fork, go from there to a women's club meeting and sample their pickled tomatoes that would make a Mexican faint just to smell 'em. And he has got to tell the voters that what this country needs is more say-so on the local level and in the next breath he's got to promise them everything from a good rain to a new post office.

Farthermore, allowed Zeke, at election time a Congressman has got to keep the voter calm. The cutback in jobs and spending the Congress swore would follow the tax hike this year will have to wait on account of the voter would notice he didn't get no Saturday mail a heap quicker than he would get upset about another billion or two in the annual Government deficit.

And the voter, continued Zeke, ain't no better off. He has got to wade through the mud slung from all sides and try to pick the side with the least mud. He has got to make sense out of a Congress that drew up 24,000 new bills the first 18 months of this session, and had thousands more ready for the hopper.

The fellows was general surprised by Zeke's speech, none of the longest he has ever made without getting interrupted by Ed or Clem. And even Ed was agreed with Zeke that running a country the way everybody wants it run is like turning one of them jolliners over to the passengers. But personal, Mister Editor, our system at its worst is better than other kinds of Government at their best.

Yours truly,  
 Uncle Lew.

**DEPENDABLE TREE SERVICE**  
 Trimming - Removing  
 FREE ESTIMATES  
 Whether your job is big or small.  
**ED LASKI**  
 Phone HA 6-4110

**Howell Livestock Auction**  
 Every Monday at 2 p.m.  
 Southeastern Michigan's largest and most complete Auction Market.  
 For Trucking Information Call Howell 545-2470



# Candidates By the Dozens

(Continued from page one)

Local will be accepted or rejected. If passed, it would increase the personal property tax limit by one mill. A mill is one dollar per thousand, or one percent of one percent. The increase would cover the years 1969-1971 inclusively with revenue allocated to the Board of County Road Commissioners to improve the county road system. Freedom township residents will decide whether alcohol will be sold "by the glass" for consumption on the premises in their township. This will allow consumption of hard liquor as well as beer and wine in bars and restaurants as individual patrons.

**Candidates Make Lengthy List**  
Voters will be able to choose either a straight party ticket, merely casting one vote for each candidate on that party ticket, or voting for individual candidates on any ticket.

Presidential and vice-presidential candidates are Hubert H. Humphrey and Edmund S. Muskie, Democratic; Richard M. Nixon and Spiro T. Agnew, Republican; Fred Halstead, Republican; and Boutelle, Socialist Workers; George A. Blomen and George Taylor, Socialist Labor; George C. Wallace and Curtis LeMay, American Independent Party; Eldridge Cleaver and Larry

Hochman, New Politics. Presidential and vice-presidential candidates cannot be split and would automatically be a vote for Gen. LeMay, his running mate. The ballot will show the name "Marvin Griffin" as vice-presidential candidate for the independent party but the actual vice-presidential candidate is Le May.

Congressional candidates for the second district are Wes Vian, Democratic; Marvin L. Esch, Republican; John Bellato, Workers; Ralph W. Muncy, Labor; and Bertram E. Garskof, New Politics.

State legislature candidates from the 51st District are Joseph W. Kolbe, Democratic; Thomas G. Sharpe, Republican.

Voters should designate no more than two of the following candidates for State Board of Education: Michael J. Deeb and Marilyn Jean Kelly, Democratic; Barbara Dumouchelle and James Ten Brink, Republican; Ellen Robinson and Evelyn Sell, Workers; Peter Goonin, Frank Troha, Labor.

Designate not more than two of the following candidates for regent of the University of Michigan: Gerald R. Dunn and Robert E. Niderlander, Democratic; Lawrence B. Lindemore and Fred Matthea, Jr., Republican; Helen

Schiff, Workers; Glen W. Johnson and Lydia B. Muncy, Labor; Eric Chester and Thomas Russell Copi, New Politics.

Votes may be cast for two of the following candidates for Trustee of Michigan State University: Warren M. Huff and Blanche Martin, Democratic; David Diehl and Richard Ernst, Republican; George Bouse and Paul Lodico, Workers; Theos A. Grove and John Zywicki, Labor; Bradford A. Lang and Jason P. Lovette, New Politics.

Voters may choose two of the following candidates for the Board of Governors at Wayne State University: Augustus J. Calloway and George C. Edwards, Democratic; Kurt Keydel and Victor G. Raviolo, Republican; Evelyn Kirsch and Joseph Sanders, Workers; Vito J. DeLisi and Lowell E. Miller, Labor; William Bunge, New Politics.

**Candidates for County Office**  
Candidates for the county prosecuting attorney are John M. Toomey, Democratic; William F. Delhey, Republican. Candidates for Sheriff are Douglas J. Harvey, Democratic; George A. Peterson, Republican; and Jim Lewis, New Politics.

County clerk candidates are Lois Jean Owens, Democratic; and Robert M. Harrison, Republican.

Register of Deeds candidates are Ethel M. Howard, Democratic; and Patricia Newkirk Hardy, Republican.

Drain Commissioner candidates are Richard E. Nash, Democratic; and John H. Flook, Republican.

Surveyor candidates are Ulrich W. Stoll, Democratic; and Herbert S. Hicks, Republican.

District 1 county supervisor candidate is Jay L. Bradbury, Republican.

Sylvan township trustee candidates are Norman Eisenmann, Democratic; and George A. Merkel, Republican.

Two choices may be made for Washtenaw Community College Trustees. The candidates, for six-year terms, are William J. Bott, Richard S. Cogswell, Alex L. Haynes, and Anthony J. Proccassi.

## Dwight Beach School HONOR ROLL

**8th Grade**—Diane Akin, David Alber, Susan Allen, James Barnes, Steven Bennett, Pamela Blackwell, Robin Boyer, Gregg Burg, Mary Chandler, Keith Cockerline, John Coley, Deborah Conklin, Jodi Daniels, Tina Edger, Teresa Glibeath, Tammy Greenleaf, Cindy Harcock, Kenneth Harris, Robert Heroules, Dale Heydlauff, Merry Hoffmeyer, (all A); Janis Hopkins Ann Kalmbach, Michael Keller, Jane Knott, Vickie Koch, David Leach, Kim Longworth, Duane Luick, Laurie Mann, Donald Messner, Kim Miles, Randy Musbah, Michele Osborn, Mark Pennington, Joanne Popovich, Shelly Porath, Chris Rabbitt, John Schaefer, Elaine Schenk, Sharon Schiller, Lori Schrader, Carol Schroen, Basil Sott, (all A); Linda Shadoan, Linda Simon, Brian Smith, (all A); Shawn Spaulding, Renita Taylor, Elizabeth Tobin, Anne Treado, John Wagner, Faye Weirich, Daniel Williams, Curt Winans, Paul Wood.

**7th Grade**—John Beeman, James Belser, Neil Bollinger, Thomas Boylan, John Brauningner, Vicki Burnett, Ann Bury, Jane Buxton, Paul Case, Mary T. Clark, Ronald Clark, Ronald Collins, Craig Coltre, Lawrence Doll, Gloria Fish,

Todd Gardner, Nancy German, Phyllis Jedele, Nancy Jennings, Bridget Grohner, Linda Hafner, Audrey Heard, Thomas Hepburn, William Kalmbach, (all A); Dennis Kipfmiller, Patrice Knickerbocker, Dale Koch, Jennifer Lane, Joseph Lantis, Jon Lewis, Mary Linebaugh, Jeffrey Marshall, Michelle McClean, Ann Merkel, (all A); Michael Murphy, Elinor Musolf, Michael Nadeau, Sandra Norton, Denise Nutt, Deborah Orlovski, (all A); Suzanne Osinski, Susan Ottoman, Margery Parsons, Janice Powers, Marlene Raney, Darlene Robbins, Debra Roode, Kathryn Rybka, Gary Sanderson, Kathryn Sannes, Gena Shoemaker, Gina Slane, Jeffrey Sprague, Kathleen Stoll, Jennifer Tandy, Robert L. Taylor, Roben Toms, Daniel Thomson, Jeanne Thornton, Mary Verchereau, Lynette Villemure, Collette Wright.

**8th Grade**—Dobri Akin, Stephanie Aldrich, Elizabeth Beiser, Judith Blaes, Beverly Bott, Barbara Boylan, David Brasso, Phyllis Buss, Donna Clark, Donald Conklin, Gina Cotterman, Jeffery Daniels, Carole Dietlo, Carol Fairbrother, Lee Ferguson, Thomas Forner, Ted Hinderer, Kathy Kealy, Stephen Koiser, Peggy Krall, Ralph Lee, John Mann, Marilyn Peffer, Alicia Pearson, Cynthia Powell, Bonnie Powers, Connie Salyer, Robert Schaeffer, Norman Schaffer, Robert

Schneider, Phyllis Shadoan, Stephen Siebert, Tom Skittenhelm, Cynthia Smith, Karen Sullivan, (all A); Rebecca Tirb, William Tite, Janet Hackenbut, Judy Welton, Connie Wireman, Mary Wood, Steven Worden, John R. Young.

**NATO MEETS EARLIER**  
State Department officials have announced the North Atlantic Treaty Organization will hold its winter foreign ministers' meeting about a month earlier than had been planned due to the Czech crisis. It had been planned for Dec. 18.

Freedom of speech is a valuable possession of every man but it is a foolish individual who speaks too freely.



RODNEY E. HUTCHINSON

## ELECT RODNEY E. HUTCHINSON DISTRICT JUDGE

He has supported the establishment of a court sitting regularly in Chelsea. Support a local court.

**Vote for Rod HUTCHINSON**

**Week-End Specials**  
-at-  
**DANCER'S**  
LADIES' ALL-WEATHER COATS  
Zip-out lining. Assorted colors. Sizes 12 to 18.  
**Only \$17.77**

LADIES' and GIRLS' **SNOW BOOTS**  
Fully lined, water-proof. 15-inch. Brown or black.  
**Only \$7.77**

**EVENKNIT HOSE**  
**MOJUD and**  
Our Regular \$1.00 Hose  
Special This Week-End Only  
**Only 77¢ pr.**  
3 pair \$2.27  
(Sorry, limit 3 pairs to a customer)

Use Our Christmas Lay-Away Plan

**DANCER'S**  
'Chelsea's Friendly Dept. Store'

**Two Minor Fires Reported During Week**  
Two minor fires called out the Chelsea firemen during the week. Last Wednesday, a car owned by Mr. and Mrs. Benjamin Cook, 521 Lanewood, caught fire from a backfire through the carburetor in the Stop & Shop parking lot. Damage was minor.

A stump fire across from Beach Junior High school on Mayer Dr., caused no damage Sunday. Though high winds threatened to spread the fire, it was confined to the stump. Firemen found a railroad flare nearby and guessed that children had been playing with it and caused the fire.

The "good neighbor" policy can be applied with some benefit right here at home.

The news is not to be confused with opinions about the news.

(Political Advertisement)

**Re-Elect Drain Commissioner**  
**JOHN H. FLOOK**  
*The Man Who Gets Things Done!*

**Republican**

**OWEN DRAIN**  
*An Unmatched Record of Accomplishment!*

17 Years Experience

**'Democracy is the best form of government, but the toughest to make work. It demands that each of us deal with our neighbors in a spirit of trust and fair play.'**

**'We MUST provide justice, opportunity and dignity for everyone! Only under these conditions can we expect law and order. As a first step, we must guarantee every man a chance to work for wages adequate to support a family. We must provide training for new job skills. We must speed rehabilitation of run-down housing and increase the supply of homes available to low-income families. We must quickly clean up our polluted environment, in which 300 million Americans will be living in just a few short decades.'**

**'To help pay the cost, we should cut funds for the multibillion dollar man-on-the-moon race. We must reduce the level of pork-barrel spending. We must reconsider the unwise decision to proceed on the exceedingly costly "anti-missile defense" system, for it cannot provide any real security. And we must close the huge tax loopholes, particularly the oil-depletion allowance, which drain off billions of dollars of our tax money.'**

**'Finally, while our troops in Vietnam have performed in a dedicated and courageous manner, the objectives we have assigned them have proved unrealistic. While all of us hope that the peace negotiations will be successful, we must face the possibility that they will not. In that event, we must return the job of fighting to the South Vietnamese. I would urge that we begin to withdraw our forces deliberately and unilaterally from Vietnam. We should start by retracting our units from exposed positions, end all bombing of North Vietnam, consolidate in defensible areas, and cease operations except as required for our own defense.'**

**'I need and ask for your support on Tuesday, November 5th!'**

**Let's get action! vote Vivian**  
for U. S. Congress/democrat

CITIZENS FOR VIVIAN, OWEN NYSTUEN, TREAS., BOX 1089, ANN ARBOR, MICH.



Ads  
Taken  
Till 5 p.m.  
Tuesday

IT'S EASY TO  
BUY-SELL-RENT-  
HIRE & FIND WITH

WANT ADS

## WANT ADS

The  
Chelsea Standard

**WANT AD RATES**  
PAID IN ADVANCE—All regular advertisements, 50 cents for 25 words or less, each insertion. Count each figure as a word. For more than 25 words add 2 cents per word for each insertion. "Blind" ads or box number ads, 50 cents extra per insertion.  
CHARGE RATES—Same as cash in advance, with 10 cents bookkeeping charge if not paid before 6 p.m. Tuesday preceding publication. Pay in advance, send cash or stamps and save 15 cents.  
DISPLAY WANT ADS—Rate, \$1.10 per column inch, single column with only 4, 6, 8, 10, 12, 14, 16, 18, 20, 22, 24, 26, 28, 30, 32, 34, 36, 38, 40, 42, 44, 46, 48, 50, 52, 54, 56, 58, 60, 62, 64, 66, 68, 70, 72, 74, 76, 78, 80, 82, 84, 86, 88, 90, 92, 94, 96, 98, 100, 102, 104, 106, 108, 110, 112, 114, 116, 118, 120, 122, 124, 126, 128, 130, 132, 134, 136, 138, 140, 142, 144, 146, 148, 150, 152, 154, 156, 158, 160, 162, 164, 166, 168, 170, 172, 174, 176, 178, 180, 182, 184, 186, 188, 190, 192, 194, 196, 198, 200, 202, 204, 206, 208, 210, 212, 214, 216, 218, 220, 222, 224, 226, 228, 230, 232, 234, 236, 238, 240, 242, 244, 246, 248, 250, 252, 254, 256, 258, 260, 262, 264, 266, 268, 270, 272, 274, 276, 278, 280, 282, 284, 286, 288, 290, 292, 294, 296, 298, 300, 302, 304, 306, 308, 310, 312, 314, 316, 318, 320, 322, 324, 326, 328, 330, 332, 334, 336, 338, 340, 342, 344, 346, 348, 350, 352, 354, 356, 358, 360, 362, 364, 366, 368, 370, 372, 374, 376, 378, 380, 382, 384, 386, 388, 390, 392, 394, 396, 398, 400, 402, 404, 406, 408, 410, 412, 414, 416, 418, 420, 422, 424, 426, 428, 430, 432, 434, 436, 438, 440, 442, 444, 446, 448, 450, 452, 454, 456, 458, 460, 462, 464, 466, 468, 470, 472, 474, 476, 478, 480, 482, 484, 486, 488, 490, 492, 494, 496, 498, 500, 502, 504, 506, 508, 510, 512, 514, 516, 518, 520, 522, 524, 526, 528, 530, 532, 534, 536, 538, 540, 542, 544, 546, 548, 550, 552, 554, 556, 558, 560, 562, 564, 566, 568, 570, 572, 574, 576, 578, 580, 582, 584, 586, 588, 590, 592, 594, 596, 598, 600, 602, 604, 606, 608, 610, 612, 614, 616, 618, 620, 622, 624, 626, 628, 630, 632, 634, 636, 638, 640, 642, 644, 646, 648, 650, 652, 654, 656, 658, 660, 662, 664, 666, 668, 670, 672, 674, 676, 678, 680, 682, 684, 686, 688, 690, 692, 694, 696, 698, 700, 702, 704, 706, 708, 710, 712, 714, 716, 718, 720, 722, 724, 726, 728, 730, 732, 734, 736, 738, 740, 742, 744, 746, 748, 750, 752, 754, 756, 758, 760, 762, 764, 766, 768, 770, 772, 774, 776, 778, 780, 782, 784, 786, 788, 790, 792, 794, 796, 798, 800, 802, 804, 806, 808, 810, 812, 814, 816, 818, 820, 822, 824, 826, 828, 830, 832, 834, 836, 838, 840, 842, 844, 846, 848, 850, 852, 854, 856, 858, 860, 862, 864, 866, 868, 870, 872, 874, 876, 878, 880, 882, 884, 886, 888, 890, 892, 894, 896, 898, 900, 902, 904, 906, 908, 910, 912, 914, 916, 918, 920, 922, 924, 926, 928, 930, 932, 934, 936, 938, 940, 942, 944, 946, 948, 950, 952, 954, 956, 958, 960, 962, 964, 966, 968, 970, 972, 974, 976, 978, 980, 982, 984, 986, 988, 990, 992, 994, 996, 998, 1000, 1002, 1004, 1006, 1008, 1010, 1012, 1014, 1016, 1018, 1020, 1022, 1024, 1026, 1028, 1030, 1032, 1034, 1036, 1038, 1040, 1042, 1044, 1046, 1048, 1050, 1052, 1054, 1056, 1058, 1060, 1062, 1064, 1066, 1068, 1070, 1072, 1074, 1076, 1078, 1080, 1082, 1084, 1086, 1088, 1090, 1092, 1094, 1096, 1098, 1100, 1102, 1104, 1106, 1108, 1110, 1112, 1114, 1116, 1118, 1120, 1122, 1124, 1126, 1128, 1130, 1132, 1134, 1136, 1138, 1140, 1142, 1144, 1146, 1148, 1150, 1152, 1154, 1156, 1158, 1160, 1162, 1164, 1166, 1168, 1170, 1172, 1174, 1176, 1178, 1180, 1182, 1184, 1186, 1188, 1190, 1192, 1194, 1196, 1198, 1200, 1202, 1204, 1206, 1208, 1210, 1212, 1214, 1216, 1218, 1220, 1222, 1224, 1226, 1228, 1230, 1232, 1234, 1236, 1238, 1240, 1242, 1244, 1246, 1248, 1250, 1252, 1254, 1256, 1258, 1260, 1262, 1264, 1266, 1268, 1270, 1272, 1274, 1276, 1278, 1280, 1282, 1284, 1286, 1288, 1290, 1292, 1294, 1296, 1298, 1300, 1302, 1304, 1306, 1308, 1310, 1312, 1314, 1316, 1318, 1320, 1322, 1324, 1326, 1328, 1330, 1332, 1334, 1336, 1338, 1340, 1342, 1344, 1346, 1348, 1350, 1352, 1354, 1356, 1358, 1360, 1362, 1364, 1366, 1368, 1370, 1372, 1374, 1376, 1378, 1380, 1382, 1384, 1386, 1388, 1390, 1392, 1394, 1396, 1398, 1400, 1402, 1404, 1406, 1408, 1410, 1412, 1414, 1416, 1418, 1420, 1422, 1424, 1426, 1428, 1430, 1432, 1434, 1436, 1438, 1440, 1442, 1444, 1446, 1448, 1450, 1452, 1454, 1456, 1458, 1460, 1462, 1464, 1466, 1468, 1470, 1472, 1474, 1476, 1478, 1480, 1482, 1484, 1486, 1488, 1490, 1492, 1494, 1496, 1498, 1500, 1502, 1504, 1506, 1508, 1510, 1512, 1514, 1516, 1518, 1520, 1522, 1524, 1526, 1528, 1530, 1532, 1534, 1536, 1538, 1540, 1542, 1544, 1546, 1548, 1550, 1552, 1554, 1556, 1558, 1560, 1562, 1564, 1566, 1568, 1570, 1572, 1574, 1576, 1578, 1580, 1582, 1584, 1586, 1588, 1590, 1592, 1594, 1596, 1598, 1600, 1602, 1604, 1606, 1608, 1610, 1612, 1614, 1616, 1618, 1620, 1622, 1624, 1626, 1628, 1630, 1632, 1634, 1636, 1638, 1640, 1642, 1644, 1646, 1648, 1650, 1652, 1654, 1656, 1658, 1660, 1662, 1664, 1666, 1668, 1670, 1672, 1674, 1676, 1678, 1680, 1682, 1684, 1686, 1688, 1690, 1692, 1694, 1696, 1698, 1700, 1702, 1704, 1706, 1708, 1710, 1712, 1714, 1716, 1718, 1720, 1722, 1724, 1726, 1728, 1730, 1732, 1734, 1736, 1738, 1740, 1742, 1744, 1746, 1748, 1750, 1752, 1754, 1756, 1758, 1760, 1762, 1764, 1766, 1768, 1770, 1772, 1774, 1776, 1778, 1780, 1782, 1784, 1786, 1788, 1790, 1792, 1794, 1796, 1798, 1800, 1802, 1804, 1806, 1808, 1810, 1812, 1814, 1816, 1818, 1820, 1822, 1824, 1826, 1828, 1830, 1832, 1834, 1836, 1838, 1840, 1842, 1844, 1846, 1848, 1850, 1852, 1854, 1856, 1858, 1860, 1862, 1864, 1866, 1868, 1870, 1872, 1874, 1876, 1878, 1880, 1882, 1884, 1886, 1888, 1890, 1892, 1894, 1896, 1898, 1900, 1902, 1904, 1906, 1908, 1910, 1912, 1914, 1916, 1918, 1920, 1922, 1924, 1926, 1928, 1930, 1932, 1934, 1936, 1938, 1940, 1942, 1944, 1946, 1948, 1950, 1952, 1954, 1956, 1958, 1960, 1962, 1964, 1966, 1968, 1970, 1972, 1974, 1976, 1978, 1980, 1982, 1984, 1986, 1988, 1990, 1992, 1994, 1996, 1998, 2000, 2002, 2004, 2006, 2008, 2010, 2012, 2014, 2016, 2018, 2020, 2022, 2024, 2026, 2028, 2030, 2032, 2034, 2036, 2038, 2040, 2042, 2044, 2046, 2048, 2050, 2052, 2054, 2056, 2058, 2060, 2062, 2064, 2066, 2068, 2070, 2072, 2074, 2076, 2078, 2080, 2082, 2084, 2086, 2088, 2090, 2092, 2094, 2096, 2098, 2100, 2102, 2104, 2106, 2108, 2110, 2112, 2114, 2116, 2118, 2120, 2122, 2124, 2126, 2128, 2130, 2132, 2134, 2136, 2138, 2140, 2142, 2144, 2146, 2148, 2150, 2152, 2154, 2156, 2158, 2160, 2162, 2164, 2166, 2168, 2170, 2172, 2174, 2176, 2178, 2180, 2182, 2184, 2186, 2188, 2190, 2192, 2194, 2196, 2198, 2200, 2202, 2204, 2206, 2208, 2210, 2212, 2214, 2216, 2218, 2220, 2222, 2224, 2226, 2228, 2230, 2232, 2234, 2236, 2238, 2240, 2242, 2244, 2246, 2248, 2250, 2252, 2254, 2256, 2258, 2260, 2262, 2264, 2266, 2268, 2270, 2272, 2274, 2276, 2278, 2280, 2282, 2284, 2286, 2288, 2290, 2292, 2294, 2296, 2298, 2300, 2302, 2304, 2306, 2308, 2310, 2312, 2314, 2316, 2318, 2320, 2322, 2324, 2326, 2328, 2330, 2332, 2334, 2336, 2338, 2340, 2342, 2344, 2346, 2348, 2350, 2352, 2354, 2356, 2358, 2360, 2362, 2364, 2366, 2368, 2370, 2372, 2374, 2376, 2378, 2380, 2382, 2384, 2386, 2388, 2390, 2392, 2394, 2396, 2398, 2400, 2402, 2404, 2406, 2408, 2410, 2412, 2414, 2416, 2418, 2420, 2422, 2424, 2426, 2428, 2430, 2432, 2434, 2436, 2438, 2440, 2442, 2444, 2446, 2448, 2450, 2452, 2454, 2456, 2458, 2460, 2462, 2464, 2466, 2468, 2470, 2472, 2474, 2476, 2478, 2480, 2482, 2484, 2486, 2488, 2490, 2492, 2494, 2496, 2498, 2500, 2502, 2504, 2506, 2508, 2510, 2512, 2514, 2516, 2518, 2520, 2522, 2524, 2526, 2528, 2530, 2532, 2534, 2536, 2538, 2540, 2542, 2544, 2546, 2548, 2550, 2552, 2554, 2556, 2558, 2560, 2562, 2564, 2566, 2568, 2570, 2572, 2574, 2576, 2578, 2580, 2582, 2584, 2586, 2588, 2590, 2592, 2594, 2596, 2598, 2600, 2602, 2604, 2606, 2608, 2610, 2612, 2614, 2616, 2618, 2620, 2622, 2624, 2626, 2628, 2630, 2632, 2634, 2636, 2638, 2640, 2642, 2644, 2646, 2648, 2650, 2652, 2654, 2656, 2658, 2660, 2662, 2664, 2666, 2668, 2670, 2672, 2674, 2676, 2678, 2680, 2682, 2684, 2686, 2688, 2690, 2692, 2694, 2696, 2698, 2700, 2702, 2704, 2706, 2708, 2710, 2712, 2714, 2716, 2718, 2720, 2722, 2724, 2726, 2728, 2730, 2732, 2734, 2736, 2738, 2740, 2742, 2744, 2746, 2748, 2750, 2752, 2754, 2756, 2758, 2760, 2762, 2764, 2766, 2768, 2770, 2772, 2774, 2776, 2778, 2780, 2782, 2784, 2786, 2788, 2790, 2792, 2794, 2796, 2798, 2800, 2802, 2804, 2806, 2808, 2810, 2812, 2814, 2816, 2818, 2820, 2822, 2824, 2826, 2828, 2830, 2832, 2834, 2836, 2838, 2840, 2842, 2844, 2846, 2848, 2850, 2852, 2854, 2856, 2858, 2860, 2862, 2864, 2866, 2868, 2870, 2872, 2874, 2876, 2878, 2880, 2882, 2884, 2886, 2888, 2890, 2892, 2894, 2896, 2898, 2900, 2902, 2904, 2906, 2908, 2910, 2912, 2914, 2916, 2918, 2920, 2922, 2924, 2926, 2928, 2930, 2932, 2934, 2936, 2938, 2940, 2942, 2944, 2946, 2948, 2950, 2952, 2954, 2956, 2958, 2960, 2962, 2964, 2966, 2968, 2970, 2972, 2974, 2976, 2978, 2980, 2982, 2984, 2986, 2988, 2990, 2992, 2994, 2996, 2998, 3000, 3002, 3004, 3006, 3008, 3010, 3012, 3014, 3016, 3018, 3020, 3022, 3024, 3026, 3028, 3030, 3032, 3034, 3036, 3038, 3040, 3042, 3044, 3046, 3048, 3050, 3052, 3054, 3056, 3058, 3060, 3062, 3064, 3066, 3068, 3070, 3072, 3074, 3076, 3078, 3080, 3082, 3084, 3086, 3088, 3090, 3092, 3094, 3096, 3098, 3100, 3102, 3104, 3106, 3108, 3110, 3112, 3114, 3116, 3118, 3120, 3122, 3124, 3126, 3128, 3130, 3132, 3134, 3136, 3138, 3140, 3142, 3144, 3146, 3148, 3150, 3152, 3154, 3156, 3158, 3160, 3162, 3164, 3166, 3168, 3170, 3172, 3174, 3176, 3178, 3180, 3182, 3184, 3186, 3188, 3190, 3192, 3194, 3196, 3198, 3200, 3202, 3204, 3206, 3208, 3210, 3212, 3214, 3216, 3218, 3220, 3222, 3224, 3226, 3228, 3230, 3232, 3234, 3236, 3238, 3240, 3242, 3244, 3246, 3248, 3250, 3252, 3254, 3256, 3258, 3260, 3262, 3264, 3266, 3268, 3270, 3272, 3274, 3276, 3278, 3280, 3282, 3284, 3286, 3288, 3290, 3292, 3294, 3296, 3298, 3300, 3302, 3304, 3306, 3308, 3310, 3312, 3314, 3316, 3318, 3320, 3322, 3324, 3326, 3328, 3330, 3332, 3334, 3336, 3338, 3340, 3342, 3344, 3346, 3348, 3350, 3352, 3354, 3356, 3358, 3360, 3362, 3364, 3366, 3368, 3370, 3372, 3374, 3376, 3378, 3380, 3382, 3384, 3386, 3388, 3390, 3392, 3394, 3396, 3398, 3400, 3402, 3404, 3406, 3408, 3410, 3412, 3414, 3416, 3418, 3420, 3422, 3424, 3426, 3428, 3430, 3432, 3434, 3436, 3438, 3440, 3442, 3444, 3446, 3448, 3450, 3452, 3454, 3456, 3458, 3460, 3462, 3464, 3466, 3468, 3470, 3472, 3474, 3476, 3478, 3480, 3482, 3484, 3486, 3488, 3490, 3492, 3494, 3496, 3498, 3500, 3502, 3504, 3506, 3508, 3510, 3512, 3514, 3516, 3518, 3520, 3522, 3524, 3526, 3528, 3530, 3532, 3534, 3536, 3538, 3540, 3542, 3544, 3546, 3548, 3550, 3552, 3554, 3556, 3558, 3560, 3562, 3564, 3566, 3568, 3570, 3572, 3574, 3576, 3578, 3580, 3582, 3584, 3586, 3588, 3590, 3592, 3594, 3596, 3598, 3600, 3602, 3604, 3606, 3608, 3610, 3612, 3614, 3616, 3618, 3620, 3622, 3624, 3626, 3628, 3630, 3632, 3634, 3636, 3638, 3640, 3642, 3644, 3646, 3648, 3650, 3652, 3654, 3656, 3658, 3660, 3662, 3664, 3666, 3668, 3670, 3672, 3674, 3676, 3678, 3680, 3682, 3684, 3686, 3688, 3690, 3692, 3694, 3696, 3698, 3700, 3702, 3704, 3706, 3708, 3710, 3712, 3714, 3716, 3718, 3720, 3722, 3724, 3726, 3728, 3730, 3732, 3734, 3736, 3738, 3740, 3742, 3744, 3746, 3748, 3750, 3752, 3754, 3756, 3758, 3760, 3762, 3764, 3766, 3768, 3770, 3772, 3774, 3776, 3778, 3780, 3782, 3784, 3786, 3788, 3790, 3792, 3794, 3796, 3798, 3800, 3802, 3804, 3806, 3808, 3810, 3812, 3814, 3816, 3818, 3820, 3822, 3824, 3826, 3828, 3830, 3832, 3834, 3836, 3838, 3840, 3842, 3844, 3846, 3848, 3850, 3852, 3854, 3856, 3858, 3860, 3862, 3864, 3866, 3868, 3870, 3872, 3874, 3876, 3878, 3880, 3882, 3884, 3886, 3888, 3890, 3892, 3894, 3896, 3898, 3900, 3902, 3904, 3906, 3908, 3910, 3912, 3914, 3916, 3918, 3920, 3922, 3924, 3926, 3928, 3930, 3932, 3934, 3936, 3938, 3940, 3942, 3944, 3946, 3948, 3950, 3952, 3954, 3956, 3958, 3960, 3962, 3964, 3966, 3968, 3970, 3972, 3974, 3976, 3978, 3980, 3982, 3984, 3986, 3988, 3990, 3992, 3994, 3996, 3998, 4000, 4002, 4004, 4006, 4008, 4010, 4012, 4014, 4016, 4018, 4020, 4022, 4024, 4026, 4028, 4030, 4032, 4034, 4036, 4038, 4040, 4042, 4044, 4046, 4048, 4050, 4052, 4054, 4056, 4058, 4060, 4062, 4064, 4066, 4068, 4070, 4072, 4074, 4076, 4078, 4080, 4082, 4084, 4086, 4088, 4090, 4092, 4094, 4096, 4098, 4100, 4102, 4104, 4106, 4108, 4110, 4112, 4114, 4116, 4118, 4120, 4122, 4124, 4126, 4128, 4130, 4132, 4134, 4136, 413



### WANT ADS

**WANT CARE**—Have room for 2 care children in my licensed home. Between Dexter and Chelsea. 212-475-7085. 20

**SALE**—Zenith 21" floor model television. \$25. 475-7085. 20

**WANTED**—Yearling hens. GA 8-20. 20

**WANTED**—1961 Station wagon, V-8. Now tires and brakes. Condition—662-0510, after 10. 10

### WANT ADS

**TWO NEW IDEA** corn pickers. Model No. 7 and No. 10. Good condition. 20824 Waterloo Rd. 20

**HELP WANTED**—Male and female—real estate sales manager and salesmen. Highest commission. Art Daniels Realty, 7080 Dexter-Pineknay Rd. HA 6-4896, or 31000 Ford Rd., GA 1-7880. 10

**1968 CHEVROLET**—4-door, 6 cyl., standard transmission, very clean, \$1,700. 668-7906. 10

### WANT ADS

**FOR SALE**—1960 Jeep station wagon, 4-wheel drive, good mechanical condition, body rusty. \$425. 479-4098. 10

**DOLL HOUSE** of the week: no credit applications ever refused. Art Daniels Realty, 7080 Dexter-Pineknay Rd. HA 6-4896 and 31000 Ford Rd., GA 1-7880. 10

**LOANS** on all real estate, even if behind on payments. Art Daniels Realty, 7080 Dexter-Pineknay Rd. HA 6-4896, or 31000 Ford Rd., GA 1-7880. 10

## CONTINUE PROGRESS RE-ELECT

**A. J. (Tony) PROCASSINI**  
Board of Trustees  
Washtenaw Community College  
NON-PARTISAN  
22 YRS. INDUSTRIAL/EDUCATIONAL EXPERIENCE

## EVENING INTERVIEWS HYDRA-MATIC

Division of General Motors Corporation  
YPSILANTI, MICHIGAN  
Located Immediately North of Willow Run Airport

### WILL BE INTERVIEWING APPLICANTS

From 8:00 a.m. to 9:00 p.m.  
Monday through Friday  
October 28, through November 1, 1968  
AND ON  
Saturday, November 2, 1968  
From 8:00 a.m. to 4:30 p.m.

For Openings as:  
★ ASSEMBLERS  
★ PRODUCTION MACHINE OPERATORS  
Also Skilled Openings for:  
★ ELECTRICIANS ★ TINSMITHS  
★ PIPEFITTERS ★ TOOL MAKERS  
★ MACHINE REPAIRMEN  
An Equal Opportunity Employer

### Bulldogs Down Saline

(Continued from page one)

Wojcik caught for a 13-yard gain, and a Bulldog first down. Houle optioned to the left, cut the sideline and with blocks from Wojcik and Mike Harvey scored Chelsea's second touchdowns. Outbrings again successfully kicked the extra point and Chelsea led, 14-0.

The teams traded the ball back and forth during the remaining time in the fourth quarter with neither scoring.

The Hornets mounted their scoring threat in the early moments of the fourth quarter. Gaining short yardage, but still able to pick up the first downs, Saline moved to Chelsea's 35-yard line. There Saline fullback Jerry Hill ran a quick pitch to the left, turned the corner and scored the Hornets' only touchdown. The extra point kick was blocked by Tim Colvia. Colvia, Chelsea linebacker, had a good night as he recovered a fumble, intercepted a pass, blocked an extra point kick and had five solo tackles.

With seven minutes remaining, Chelsea moved steadily to Saline's 12-yard line before a fumble, which Saline recovered, stopped the drive. Since only 1:10 remained in the game, the final score remained Chelsea 14, to Saline 6.

The defensive team played a good game and kept the speed of Saline's players from getting outside of them. Guard Ben Bower, tackle Mike Gaken and halfback Glen Wilkerson turned in a fine defensive game. Gaken tallied seven solo tackles and Wilkerson six.

This win places Chelsea in second place, one point behind South Lyon. The present conference leaders.

If the Bulldogs win the Dexter game Friday night, they will claim the championship title. With the Dexter team improving steadily, they could give Chelsea quite a battle. Game time is 7:30 p.m. at home.

### Friends of Library ...

(Continued from page one)

The family included as son, Clarence, a married ordained minister, a married daughter, Sarah, and a son, Joe, studying to be a Biology teacher.

The meeting is scheduled for 8 p.m. at McKim Memorial Library. The public is invited.

Certain qualities are especially desirable in selecting fabrics either in ready-mades or the draperies you make yourself. Select fabrics that are colorfast to light, laundering and dry cleaning. They should also be resistant to shrinking, stretching, soiling and heat.

### IN MEMORY OF

ALBERT J. SLANE

Your gentle face and patient smile with sadness we recall. You had a kindly word for each and died beloved by all.

The voice is mute and stilled the heart that loved us well and true. Oh, bitter was the trial to part from one so good as you.

You are not forgotten loved one nor will you ever be. As long as life and memory last we will remember thee.

We miss you now, our hearts are sore. As time goes by we miss you more. Your loving smile, your gentle face.

No one can fill your vacant place. The family of Albert J. Slane.

### THANK YOU

I wish to express my grateful appreciation to all who visited me or sent cards, fruit or flowers during my recent stay at St. Joseph Mercy Hospital, and also after my return home. Mrs. Oscar Kalmbach.

### THANK YOU

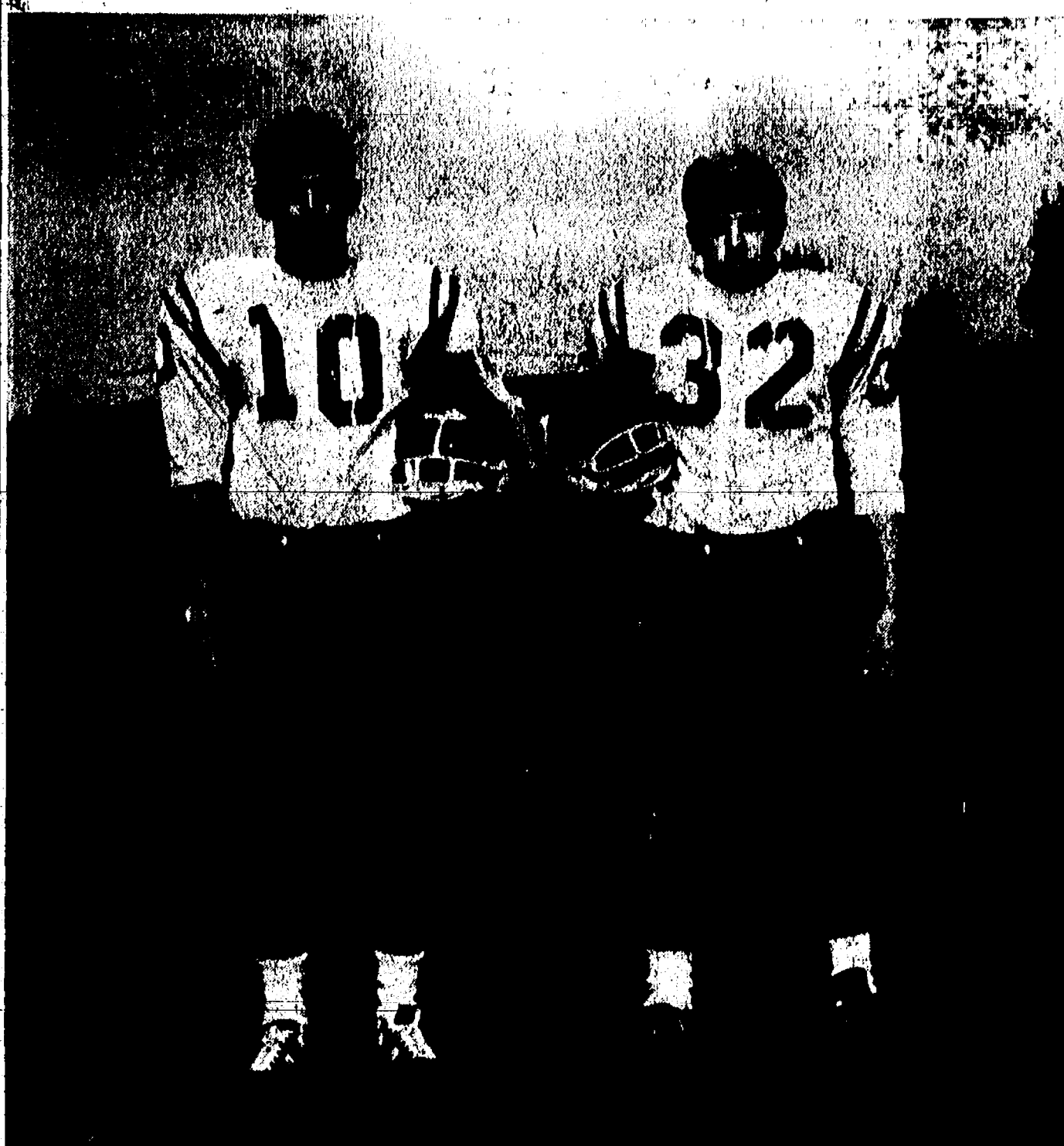
Thank you for the many visits, cards, and gifts and the visits and prayer from the Rev. Siebert, the Rev. Kellin and the Rev. Aubrey and the plants from the bowling team and women's fellowship of the Congregational church during my recent stay at the hospital. Alvin Foote.

### THANK YOU

We wish to thank the friends and neighbors, especially Pastor Siebert, the Willing Workers Circle, the telephone employees and Dr. Fisher, for their support during our recent bereavement. The Family of William H. Van Orman.

It is very easy for people to persuade themselves that they are being mistreated.

## Gridders of the Week



**JIM WOJICKI**, sophomore flanker, is a varsity player for the first time this year. He gained football experience as halfback on the junior varsity last year. When jersey number 10 is out of season Jim might be found in a track or baseball uniform, two sports he will take up again this year. In track he participates in running and pole vaulting events. Jim enjoys mathematics and his membership in varsity, key, and golf clubs. He lives with his parents, Mr. and Mrs. Sylvester Wojicki and four brothers and sisters at 716 Taylor. One brother, Bob, is a freshman at Chelsea High school.

**KARSTEN KARGEL**, junior offensive and defensive tackle, is playing football for his third season. For 6' 2", 182 pound number 82, this is his first varsity year. In addition to football, Karsten is interested in wrestling and track. Last year he joined the track team as a high-jumper and plans to continue this sport this year. He will add wrestling to his list of activities for the first time in a few weeks. When time permits Karsten enjoys hunting small game and water skiing at North Lake. After graduation, he might join the Air Force. He lives with his parents, Mr. and Mrs. Clarence Kargel at 14400 Island Lake Rd., with a brother, Kerry, Bulldog senior; and sister, Karlene, Chelsea High school freshman.

### Need Big Win

### Over Dexter for Championship

A Bulldog victory Friday over the Dexter Dreadnaughts will clinch the first league championship for the Bulldogs in seven years.

Chelsea won league championships in 1958, 1960 and shared the title with Saline in 1961 after a 10-19 tie game with the co-champs.

Before the 1958 victory, it had been a long drought in Chelsea football championships dating back to 1938.

The Dexter team has a puzzling record. They have managed to win only two games this season, but are fresh from a 20-19 win over Dundee. The Bulldogs barely sneaked by Dundee, 7-6, although they have only one loss this season.

League championships are awarded on a point basis. South Lyon now occupies the top league position with a 5-1-1 record, totaling 11 points. However, they have finished their season. Chelsea's 5-1 season totals 10 points. If they can chalk up one more victory, they will snag the championship with 12 points.

Friday's game also marks Parent's Night for the gridders and cheerleaders. The ball players and cheerleaders will be introduced by "Whitey" Guest, Chelsea public address man, prior to the game. Following the game coffee and donuts will be served to the players and cheerleaders and their parents in the school library.

All Chelsea football teams have accumulated excellent records this year. To date the over-all record of Junior and Senior High teams is 20 wins, one tie and one defeat. Friday, if the Bulldogs defeat the unpredictable Dexter team, they will clinch the championship.

### 34 Years Ago ...

(Continued from page two)

fore the board of supervisors in session this week at the county building. Governmental expenditures in the county during the coming year will reach approximately \$288,830, nearly \$50,000 more than last year.

Mr. and Mrs. Thomas Howe, who celebrated their 31st wedding anniversary on Sunday were guests of honor at a dinner given at the home of their daughter, Mrs. Paul Eisele.

Mr. and Mrs. Bert J. Conlan daughter, Katherine, and Mr. and Mrs. Armin Zinke attended a dinner on Sunday at the home of Mr. and Mrs. Paul Hoffman, Detroit, celebrating their 30th wedding anniversary of Mr. and Mrs. Conlan.

Mrs. Lorenz Wenk was hostess to the Lucky Nine at a Halloween party Tuesday evening, the guests appearing in costumes representing noted persons. Calls were made on several friends of the club. Ella Kaercher, Flora Schieffelin, Amanda Koch, Alma Bahmiller and Viola Seyfried received prizes in Lotto and Miss Schieffelin also for winning the spelling contest.

Second Grade—Jimmie Gaken, Laverne Holbrook, Willetta Lantis, Heen Loeffler, FloAnn Longworth, Dolores McBride, Ruth Paul, Rolland Robert and Betty Lou Whipple have never been absent or tardy. Phyllis Hopper has had her tonsils removed. Each of us made brownies and colored them. Dean Pigg and Mary Lou Platt had the best looking ones.

### THANK YOU

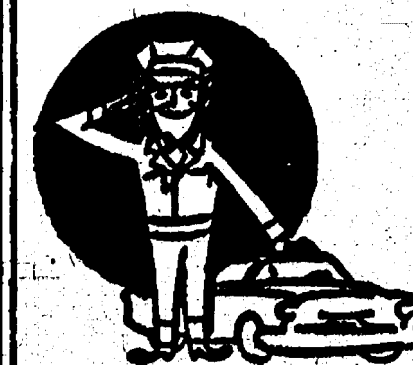
Thanks to all the persons supporting our "White Elephant" sale and tea, especially Mr. and Mrs. Ben Donaldson who opened their home to us. Spaulding for Children Auxiliary.

### LOVE LETTERS TO MAYOR

Hartford, Conn.—The mayor of Hartford receives quite a lot of mail—from letters from admirers to poems and pictures. Miss Ann Uccello, 45, the attractive mayor, has received proposals from all over the U.S. One poem was entitled "You Can't Go It Alone."

### X-15 TESTS STOPPED

Washington—A spokesman for the space agency said test flights of the X-15 rocket plane would be discontinued because there were no provisions for X-15 test flights in the 1968-69 budget. The plane had hit a top speed of 4,400 miles an hour and an altitude of 354,200 feet.



Everything right  
... ready to roll!

You know your car is RIGHT, when we check it out after any oil change or lube job.

Because we take particular care on every job, you can drive off without a care, confident of safe, smooth motoring.

PURE OIL PRODUCTS

## JIM'S PURE SERVICE

PHONE 479-3541

501 SOUTH MAIN

### TODAY'S THOUGHT

By LOUIS BURGHARDT



Crime statistics are too often considered as anonymous. But the innocent victims of crime know the figures have personal meaning. When crime hits home, we ask why criminals are coddled beyond common sense reasoning. Only then do most of us look at startling facts from the F.B.I. which show 55% of offenders released are rearrested in less than 3 years. A whopping 67% of prisoners given time-off for good behavior rearrested in 3 years. A phenomenal 83% of those acquitted were rearrested in two and a half years. In auto thefts, 72% of those granted probation were involved in other crimes in two and a half years. An incredible 65% of juveniles (under age 20) rearrested within 3 years after being initially released.

Crime continues to increase—while the rate of convictions decrease. Criminals are entitled to legal rights of course. But it is high time for authorities to realize that law abiding citizens are ALSO entitled to rights. This is a matter that all civic groups, church groups and the like, should be concerned with. A crack down on crime can and will come about when an aroused citizenry makes up its mind to do it. BURGHARDT FUNERAL HOME, 214 East Middle St., Chelsea, Mich. Phone GR 5-4111.

## —SPECIALS—

1-LB. PKG. ECKRICH ALL-MEAT  
**Sliced Bologna . . . . . 57c**  
10-OZ. PKG. FROZEN  
**Strawberries . . . 2 for 45c**  
9 1/2-OZ. CAN CHICKEN OF THE SEA  
**Tuna Fish . . . . . 41c**  
200-COUNT PKG.  
**Kleenex . . . . . 2 for 45c**  
NO. 2 1/2 CAN DEL MONTE  
**Pumpkin . . . . . 2 for 43c**

## KUSTERER'S

FOOD MARKET  
DIAL GR 9-3331 WE DELIVER



ANY TRIP YOU MAKE will be more pleasant, if the car you drive is financed the Bank Way—economically, conveniently and with local people.

**5%** on Certificates of Deposit  
**4%** On Savings Passbook Accounts  
per annum

## CHELSEA STATE BANK

Member Federal Deposit Insurance Corp. Member Federal Reserve System

"Simplicity power turns snow clearing into a winter sport."

# Simplicity Sovereign

the choice of men who know snow

Big 12 hp. engine, controlled traction differential, either Hydro-static or Vari-matic drive, and fast sure electric starting are just some of the features behind this the 42" snow thrower on this Simplicity Sovereign tractor. See this work horse or the 10 hp Landlord, with blades or snow throwers. They make short work of the big jobs all year 'round.

Convenient terms

## CHELSEA HARDWARE

110 South Main Street Phone GR 9-6311

(Paid Political Advertisement)

## ELECT RODNEY E. HUTCHINSON

### DISTRICT JUDGE

He has supported the establishment of a court sitting regularly in Chelsea. Support a local court.

RODNEY E. HUTCHINSON

## Vote for Rod HUTCHINSON



## Community Calendar



Sylvan Farm Bureau 8 p.m. Nov. 7 at home of Norman Hinderers. Everett Van Riper and Norman Hinderers, hosts.

Olive Chapter, R.A.M., 140, Annual meeting Nov. 7, 7:30 p.m.

Regular Communication of Olive Lodge No. 136 F&AM, Tuesday, Nov. 5 at 7:00 p.m.

St. James Episcopal church, Dexter, annual turkey dinner and bazaar, Sat. Nov. 2, bazaar and bake sale 3 p.m., dinner served 5:7 p.m. adv19

Jaycee membership meeting, Nov. 5-6:30 p.m. dinner at Congregational church. Visitors welcome.

Manchester United Methodist church WSCS annual family style harvest dinner, Wednesday, Nov. 6, 5 p.m. adv19

Limaneers Nov. 7 at home of Mrs. Harry Prudden, 12:30 p.m., pot-luck.

Herbert J. McKune Unit No. 31 American Legion Auxiliary, 8 p.m., Dec. 3, at the Legion Home, Cavanaugh Lake.

Community Choir Monday 8 p.m., St. Paul's UCC. 18tf

Inquiries regarding the Chelsea blood bank may be directed to Harold Jones of Central Fibre Products in the event that Mrs. Dudley Holmes is unavailable.

OES Rummage Sale at Masonic Temple Nov. 15, 9 a.m. to 9 p.m., Nov. 16, 9 a.m. to 1 p.m. For pick-up call GR 9-6531, or GR 9-4495.

St. Mary Parish annual dinner, smorgasbord style, at Chelsea High school, Sunday, Nov. 10, serving noon, 1 and 2 p.m., adults \$1.75, children 75 cents. Public cordially invited. For reservations please call Mrs. Edward Orlewski, 479-7351.

Kiwanis Pancake Supper Monday 5:30 to 8 p.m. Chelsea High school cafeteria. Tickets available at door or from Kiwanians. adv19

United Fellowship of St. Johns U.C.C., Rogers Corners Nov. 1, at 8 p.m., at church hall.

Chelsea Child Study Club Tuesday 8 p.m. Nov. 12 at St. Paul church. Co-hostesses, Mrs. J. R. Siltz and Mrs. Elton Guenther.

Regular meeting of Olive Chapter No. 108 Nov. 6 at 7:30 p.m. Officers practice Nov. 4 with color rays at 7 p.m. and officers at 7:30 p.m.

TOPS club every Wednesday from 12:30 to 2:30 p.m. in the Rebekah hall. Call GR 5-8352. For night meeting call 479-3201.

Dance sponsored by senior English classes at Chelsea High school in cafeteria after Dexter game Nov. 1. Benefit the Korean sponsored child.

Chelsea Rebekahs will have a bake sale at Sylvan Town Hall Saturday, Nov. 2 beginning at 10 a.m. adv19

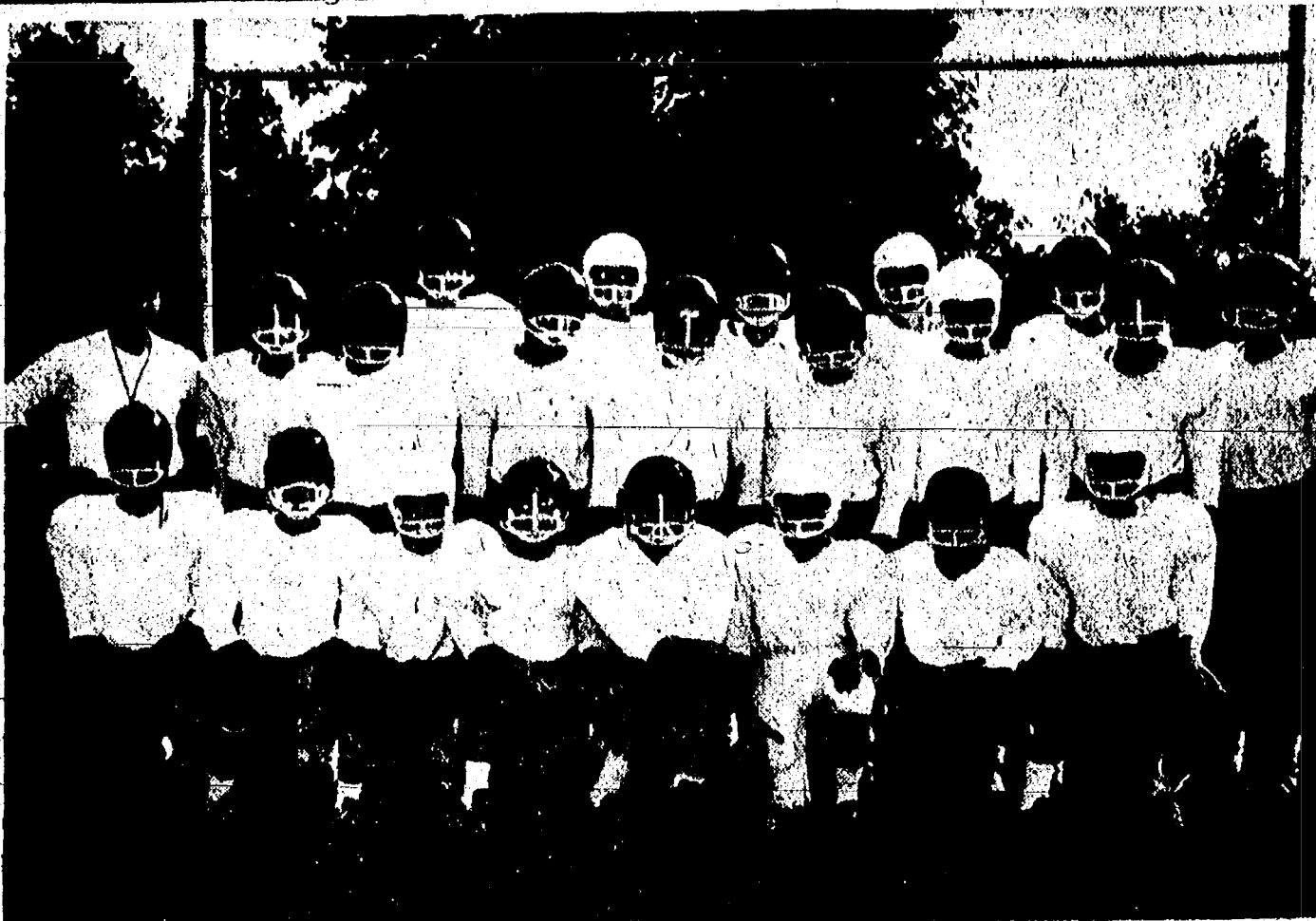
Chelsea Rebekah Lodge No. 130 District officer's visitation Nov. 5 at 8 p.m. at the hall. Cleaning Bee Nov. 4. Contact Mrs. Donovan Sweeney to help with either.

World Community Day 1 p.m. Nov. 1 at St. Paul United Church of Christ.

Senior citizens would like your new left-over pieces of fabric for making lap robes. Leave at Korner House Tuesday afternoons.

American Legion and Auxiliary hospital equipment available by contacting either Mr. or Mrs. Eugene Martin, at 475-5867 after 4 p.m.

Cards every Thursday afternoon at Korner House.



**UNDEFEATED FROSH:** This squad of helmeted freshmen will be playing their last game of the 1968 season Nov. 5, and are shooting for an undefeated record as they hope for a win over Saline. Their 4-0-1 record shows a fine team effort by the squad in their first year of competition, according to Coach Tom Ballistrere. Standouts on the squad this year are Ron Sweeney, Tom Lixey, Keith Barber and Larry Hopkins. Wayne Welton was voted the most valuable player and

Lynn Houle chosen most improved by the team. They are, front row, left to right, Lynn Houle, Wayne Welton, Larry Jones, Dave Powers, Mark Wright, Glen Musolf, Mike Thomson, Dennis Landwehr, second row, from left, Dan Schuske, Ed Koenigster, Tom McKernan, Larry Hopkins, Tom Lixey, Tom Winans, third row, from left, Coach Ballistrere, Bob Wojciech, Ron Sweeney, Jeff Hughes, Keith Barber, Steve Knickerbocker, Roger Fitch and Mark Collins.

## BIRTHS

A daughter, Wendy Christine, Oct. 22, to Mr. and Mrs. Windell Ray of Manchester. Maternal grandmother is Mrs. Euna Zahn of Chelsea and paternal grandparents are Mr. and Mrs. Edgar Ray of Manchester.

A daughter, Holly Lynn, Oct. 15, to Mr. and Mrs. Alton Nixon of Benton Harbor. Maternal grandparents are Mr. and Mrs. Vincent Stahl of Pinckney and paternal grandparents are Mr. and Mrs. Homer Nixon of Chelsea.

A son, Shannon Lee, Oct. 30, to Mr. and Mrs. John D. Darrow.

## Industrial Plants Vie For Jaycee Award in Blood Bank Support

Chelsea Jaycees will present awards to the Chelsea industry which has the highest number of donors and highest percentage of employees donating to the Chelsea Blood Bank today. The purpose of the awards are to induce donations and recognize the area industries that always help make the blood bank donations a success.

## Enthusiastic Brother Goes Too Far for Deputy

A former area resident was arrested when he over-enthusiastically defended his arrested brother. James Greenwood arrived at the Washtenaw County Jail where his brother, Joseph, 34, had been taken after being arrested for drunk and disorderly behavior outside the Wolverine Bar early Saturday morning. James created a disturbance, was arrested by a Washtenaw County Sheriff's deputy and taken to the municipal court that night. He pleaded guilty and was fined.

Joseph was released on \$32.50 bond and will appear Friday before Justice C. A. Rogers.



CAROLYN BUCKINGHAM

## CHS Student Named to Regional FHA Office

Carolyn Buckingham, Chelsea High school junior, was elected treasurer of Region III, Future Homemakers of America, at their fall meeting Saturday. She will be managing finances for several counties in this corner of Michigan.

Carolyn is the daughter of Mr. and Mrs. Raymond Buckingham, 700 N. Main St.

Approximately 500 girls and advisors enjoyed the program at Whitmore Lake High School that included a discussion about "Jobs, Careers, and You" by Mrs. Ester Mae Cox, graduate student in the Department of Home Management and Child Development at Michigan State University.

Other portions of the day's activities included reports by regional and state officers; workshops to discuss career possibilities in clothing and textiles, health, nursing, food specialist, dietitian, cosmetologist, and teacher education; and skits, group singing and activity in the gymnasium during the lunch period.

Seven girls and the two Chelsea High school advisors were in attendance.

## Cassidy Lake Youths Visit Area Church

Three young men from the Cassidy Lake Technical school visited Zion Lutheran church Sunday to talk, answer questions and visit with members of the Sunday school class taught by Richard McUmber and attend the church service afterward.

The three visitors, ages 16, 20, and 20, were invited back by many members of the congregation who "knew them a very warm welcome" according to McUmber.

They discussed their plans, background and Cassidy Lake itself. The organizers of the visit felt that it would broaden the understanding of persons different than themselves for both the visitors and church members.

McUmber is chairing the Jaycees extension group striving to organize a Jaycee chapter at Cassidy Lake similar to ones already begun in Milan and Jackson penitentiaries. The purpose of this would be to involve the young men in constructive community activities and interest them in helping others instead of worrying about their own problems while confined to Cassidy Lake.

Another group from Cassidy Lake had been taking a series of field trips to Dana Corp. during October until the program was discontinued. A reason for the suspension was not given, but organizers say that it was not done at the local level.

The Dana series of visits had been a pilot program in conjunction with Michigan Employment Security where three or four Cassidy Lake students and teachers would accompany MESC personnel to a different area of Dana each week. The purpose was to familiarize the group with various aspects of industry and allow them to see various specific jobs.

Dana personnel head Mac Donald described the groups as very interested and "full of questions."

When little boys stop eating candy, there will be no candy and no little boys.

## Notice of Hearing on Petition of Village of Chelsea to Washtenaw County Board of Supervisors for Alteration of the Boundaries of the Village of Chelsea

Notice is hereby given that a petition will be presented to the Board of Supervisors for Washtenaw County, Michigan, on Tuesday, November 12, 1968, at 10:00 A.M. at the Supervisors Room in the Washtenaw County Building, Ann Arbor, Michigan, said petition requesting that the easterly, southerly and northerly boundaries of the Village of Chelsea be altered to include the premises described as follows:

A parcel of land in the northeast quarter of Section Seven (7), Town Two (2) South, Range Four (4) East, Lima Township, described as: Beginning at the center of Section Seven (7), Town Two (2) South, Range Four (4) East; thence easterly along the east and west quarter line 907.50 feet; thence north 2° 15' 30" west parallel to the north and south quarter line of the south right of way line of the New York Central Railroad; thence westerly along the south right of way line of the New York Central Railroad to the north and south quarter line; thence south 2° 15' 30" east along north and south quarter line 1083.00 feet to the place of beginning. Containing 35.06 acres of land.

which are presently a part of the Township of Lima, County of Washtenaw, State of Michigan.

The said petition was prepared pursuant to a resolution of the Council of the Village of Chelsea adopted at a regular meeting thereof held on the 15th day of October, 1968.

All parties interested may appear at the aforesaid time before the Board of Supervisors and be heard touching the said petition and concerning the proposed alteration of the boundaries of the Village of Chelsea.

**VILLAGE OF CHELSEA**  
GEORGE WINANS, VILLAGE CLERK

## Michigan Jaycees President Initiates Newest Member

Ronald Nix of Wilkinson St., Chelsea, was initiated Saturday into the Michigan Jaycees by Bob Padgett, president of the Michigan Jaycees.

Normally Chelsea Jaycee president Don Proctor would have sworn Nix in but this time he and membership director Doug Roberson merely accompanied him. Padgett is flying across the state, participating in a nation-wide pro-bring "Young Men of Action" into the Jaycees.

Padgett is stopping at 26 cities from Houghton to Detroit, greeting each new member and personally initiating him.

United States Jaycees is a national service organization with a goal to assist their individual communities at all levels of personal and government involvement. The Michigan Jaycees, with approximately 12,000 members, have chapters in 200 communities.

Mr. and Mrs. Lynn Kern and Mr. and Mrs. Richard Kern and family attended the funeral of Mrs. Howard Butler, sister-in-law of Lynn Kern in Toledo, Mrs. Butler is formerly of Orlando, Fla.

## ATHLETIC EVENTS OF THE WEEK FOR CHELSEA HIGH SCHOOL

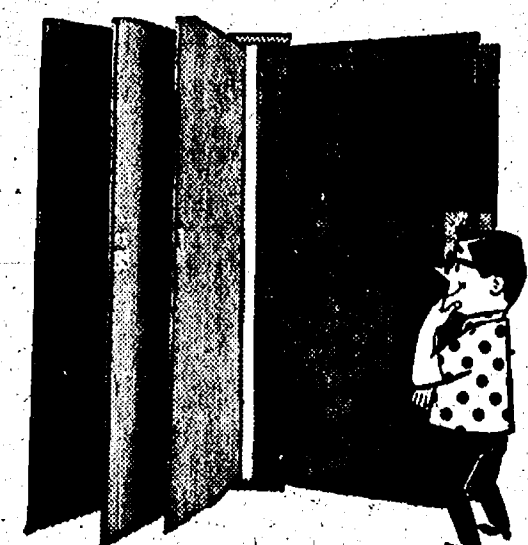
Thursday, Oct. 31—  
Junior Varsity Football ..... at Dexter, 7 p.m.  
Friday, Nov. 1—  
Varsity Football ..... Dexter, at home, 7:30 p.m.  
Tuesday, Nov. 5—  
Freshman Football ..... Saline, at home, 7 p.m.  
Friday, Nov. 8 (Last game of the season)—  
Varsity Football ..... Erie-Mason, at home, 7:30 p.m.

## TO ALL MEMBERS OF AMERICAN LEGION POST 557

I will be at the Post each evening from 6:30 to 8:30 p.m. to issue 1969 Post memberships, starting Oct. 30. Remember, department dues increase \$1 in November. Let's keep that dollar in the Post.

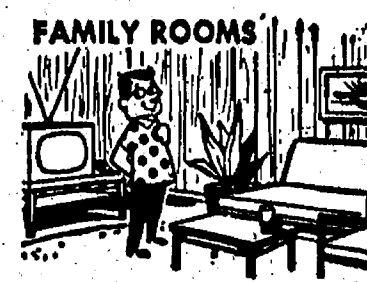
JOHN LYONS, Post Adjutant.

## NEW SERVICE FOR HOMEOWNERS!



JUST UNLOADED

## NINE NEW PRE-FINISHED PANELS



FAMILY ROOMS



BEDROOMS

ALL REAL WOOD

Chelsea Lumber Company Invites You to compare the quality of these panels with any on the market today.

and... PRICES !!

THERE JUST IS NO BETTER BUY!

- ★ Rustic Walnut, 4x8 sheet . . . . . \$11<sup>99</sup>
- ★ Imperial Moss Green Birch, 4x8 . . . . . \$8<sup>99</sup>
- ★ Plantation Antique Birch, 4x8 sheet \$6<sup>29</sup>
- ★ Plantation Natural Birch, 4x8 sheet \$6<sup>29</sup>
- ★ Plantation American Cherry, 4x8 . . . . . \$8<sup>99</sup>
- ★ Plantation Elm, 4x8 sheet . . . . . \$7<sup>49</sup>
- ★ Plantation Oak, 4x8 sheet . . . . . \$6<sup>99</sup>
- ★ Regal Walnut Cativo, 4x8 sheet . . . . . \$6<sup>29</sup>
- ★ Regal Whitestone Cativo, 4x8 sheet \$6<sup>29</sup>

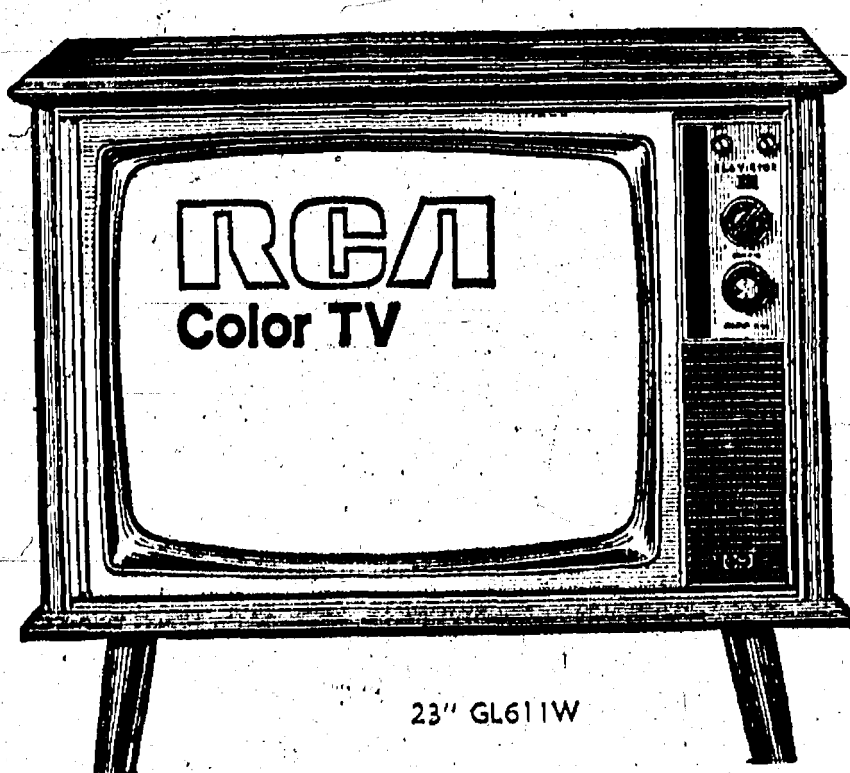
Also:

- Pre-Finished Mahogany, 4x8 sheet \$3<sup>68</sup>
- Orchard Cherry Hardboard, 4x8 . . . . . \$5<sup>79</sup>

A Total of 25 Different Panels Now in Stock.

**CHELSEA LUMBER CO.**  
Dial GR 5-3391 "Where the Home Begins"

## Gambles The Friendly Store

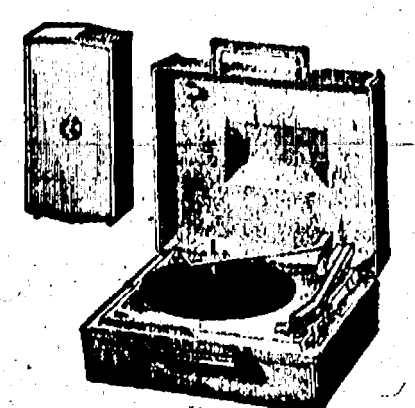


## RCA - First in COLOR TV!

Check the price on this fine wood big-screen Color

Styled to save you floor space and priced to save you money, this giant-screen RCA console is one of our finest Color TV values. Transformer-powered 25,000-volt chassis features several Solid State components in several key circuits for greater dependability. One-set VHF fine tuning, big 8" oval duo-cone speaker.

\$499<sup>95</sup>



RCA Carry'n' Stereo at a low, low price!

Removable speaker enclosure. Solid State amplifier. Feather Action Tone Arm.

\$49<sup>95</sup>



Low, low price for RCA 4-speed portable phone

Easy-to-carry automatic portable for any size, any speed record. Big 8" oval speaker.

\$36<sup>95</sup>

Always Better Buys at Gambles



# AGRICULTURE in Action

by M. L. Woolf

## Above Party Politics

Most Michigan Farmers have a farm spot in their hearts for Michigan State University—the original Land-Grant "cow college"—more than 100 years ago. Now greatly disturbs them to hear reports of bickering and political maneuvering among members of MSU Board of Trustees. Farmers recognize that University problems have grown along with the University, from a somewhat single-minded preoccupation with agriculture to the present sprawling panorama of arts and sciences now offered by 15 colleges the University complex.

Although only three of the 15 colleges are directly tied to the farming business (Natural Resources, Agriculture and Veterinary Medicine)—farmers have much more than a passing interest in the total welfare of the university, where for example, hundreds of research projects are in major farm and consumer concern.

Administration of this vast educational plant, with its multi-million dollar budgets, nearly 40,000 students, acres of buildings and thousands of decisions, rests with the eight-man Board of Trustees, elected through political party designation from among the citizens of our state. The present political composition of the Board: five Democrats and three Republicans... with Frank Merriam (R) of Deckerville, the only farmer-member of the board. Two seats on the Board are up for fall election.

To farmers, the most interesting fact about the four nominees seeking the two posts might well be one of the candidates himself—a farmer—David Hill of Danaville. His Republican running mate is Richard East, Birmingham businessman.

Democrat nominees include George Martin, East Lansing dentist, and Warren Huff, a former trustee, defeated in a previous election and currently heading the "Farmers of the Alliance" in Washington, D. C.

Whoever among the candidates are elected "from the people" is, fall, they must remain responsible to all of the people of the state. Democrat or Republican, farmer or businessman, MSU trustees must be capable of rising above party politics to give the University the kind of administration it must have.

## Gregory Man Arrested

### On DUIL Charge

Arthur Minix, 34, of 18750 Wilmsville Rd., Gregory, was arrested for drunken driving early Sunday morning.

He was spotted driving a white car on N. Main at Sycamore toward the village limits, then up 62 to Clark Lake Rd., by Chelsea Patrolmen Schneider and Page. He was taken to the Washington County Jail and released \$100 bond.

Minix is to appear Friday before Justice C. A. Rogers.

Subscribe Today to The Standard!

**YOU CAN GET  
YOUR BEST BUY  
IN CENTRAL  
AIR CONDITIONING  
RIGHT  
NOW!**



If you've been planning to air condition your home, you couldn't pick a better time than right now. Don't postpone action until a hot, humid, summer day when the need strikes you—and every body else.

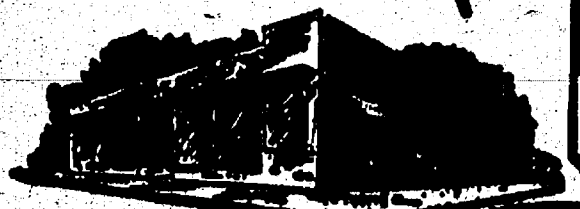
If you already have a good warm air furnace, adequate duct work and proper house wiring, you probably already have half of a year-round heating/cooling system.

**John W. Steele**  
Heating and Air Conditioning  
PHONE GR 9-4451  
521 Garfield St.

# THE SUPERMARKET THAT'S JUST A LITTLE BIT BETTER

## Stop & Shop

14901 Old U.S.-12  
Corner at M-52  
Chelsea



"Triple R Farms" U.S.D.A. Choice

## CHUCK ROAST

"Triple R Farms" U.S.D.A. Choice

### Chuck Roast

Blade  
Cut

## 49<sup>c</sup> lb.

Center  
Cut

## 59<sup>c</sup> lb.

"Triple R Farms" Lean, Boneless

### Stewing Beef . . . . . 89<sup>c</sup> lb.

"Triple R Farms" U.S.D.A. Choice

### Ground Round Steak . . . 89<sup>c</sup> lb.

Stop & Shop's Fresh, Lean, All American Beef

### Hamburger . . . . . 59<sup>c</sup> lb.

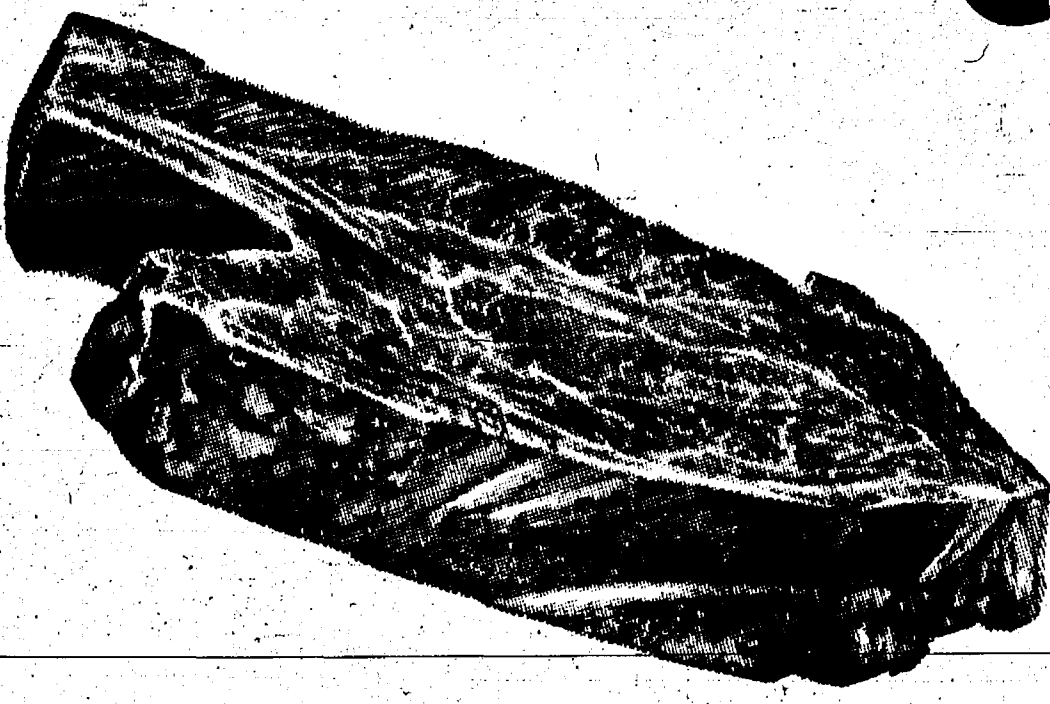
3-Lb. Units  
or More

Lean, Tender BOSTON BUTT

### Pork Roast . . . . . 53<sup>c</sup> lb.

Lean, Tender, Meaty

### Pork Steak . . . . . 63<sup>c</sup> lb.



"Triple R Farms" FRESH DRESSED

CHICKEN

LEGS or BREASTS

(Ribs Attached)

## 59<sup>c</sup> lb.

Lean, Tender

BONELESS and CUBED  
PORK CUTLETS

## 79<sup>c</sup> lb.

"Triple R Farms" Mich. Grade 1  
SLICED BOLOGNA

## 49<sup>c</sup> lb.

Stop & Shop's Homemade  
PORK SAUSAGE

## 49<sup>c</sup> lb.

MAXWELL HOUSE

## COFFEE

1-Lb.  
Can

## 69<sup>c</sup>

## FARM FRESH PRODUCE

U.S. No. 1 Michigan

### Yellow Onions . . . . . 29<sup>c</sup>

3-Lb.  
Bag

California, Firm, Crisp

### Head

### Lettuce . . . . . 19<sup>c</sup>

Large  
Head

GOLD MEDAL

## FLOUR

5-Lb.  
Bag

## 49<sup>c</sup>

Del Monte

### Peaches . . . . . 29<sup>c</sup>

1-Lb., 13-Oz.  
Can

Pet Ritz Frozen

### Pumpkin Pie . . . . . 25<sup>c</sup>

1-Lb., 4-Oz.  
Pie

Finest Brand

### Pork & Beans . . . . . 10<sup>c</sup>

1-Lb.  
Can

Kraft's Philadelphia

### Cream Cheese . . . . . 25<sup>c</sup>

8-Oz.  
Pkg.

Stop & Shop's Enriched, Sliced

## White Bread . . . . . 5

1 1/4-Lb.  
Loaves

## 95<sup>c</sup>

Kraft's Plain or Pimento

### Velveeta Cheese . . . . . 88<sup>c</sup>

2-Lb.  
Loaf

White, Yellow or Devil's Food

### Jiffy Cake Mix . . . . . 10<sup>c</sup>

9-Oz.  
Pkg.

Dole Hawaiian

### Pineapple Juice . . . . . 25<sup>c</sup>

1-Qt., 14-Oz.  
Can

One Way Bottles, No-Return

### Pepsi-Cola . . . . . 85<sup>c</sup>

8-Pack  
10 Fl. Oz.

Treesweet Florida

### Orange Juice . . . . . 3

6-Oz.  
Cans

Pioneer Pure Granulated

### Sugar . . . . . 49<sup>c</sup>

5-Lb.  
Bag

Shamrock Country Fresh

## Large EGGS . . . . . 49<sup>c</sup>

Grade A  
All White  
Doz. in Ctn.

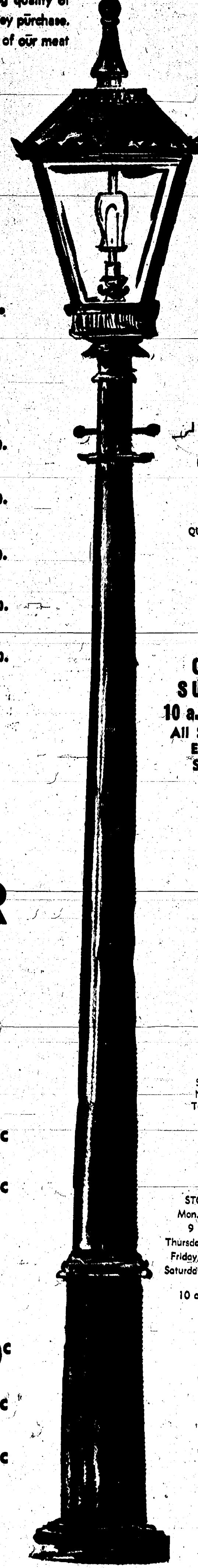
## 49<sup>c</sup>

WE  
RESERVE  
THE  
RIGHT  
TO  
LIMIT  
QUANTITIES

**OPEN  
SUNDAY**  
10 a.m. - 6 p.m.  
All Sale Prices  
Effective  
Sundays

Sorry,  
No Sales  
To Dealers

**STORE HOURS:**  
Mon., Tues., Wed.,  
9 a.m.-6 p.m.  
Thursday, 9 a.m.-9 p.m.  
Friday, 9 a.m.-9 p.m.  
Saturday, 8 a.m.-9 p.m.  
Sunday  
10 a.m. to 6 p.m.









# BOWLING NEWS

## Rolling Pin League

Standings as of Oct. 29

	W	L
Coffee Cups	21	11
Copper Uppers	20	12
Crinders	19	13
Crinders	18	14
Crinders	17	15
Crinders	16	16
Crinders	15	17
Crinders	14	18
Crinders	13	19
Crinders	12	20
Crinders	11	21

## Guys and Gals Mixed League

Standings as of Oct. 29

	W	L
Wonder Bar	23	9
Chellean Lanes	20	12
Pub No. 1	19	13
Pleasant Lake Resort	17	15
Ken's Standard Service	15	17
Team No. 9	15	17
Challengers	14	18
Murphy's Barber Shop	12	20
Pub No. 2	11	21
Recreation Tavern	11	21

## Chellean Nite Owl League

Standings as of Oct. 28

	W	L
Stivers	21	11
Don's Std. Service	19	13
Wolverine Tavern	18	14
Wahl's Dinos	18	14
Jack & Son Barbers	18	14
Chellean Drug	17	15
Waterloo Garage	16	16
Palmer's Mustangs	16	16
Washtenaw Crop Serv.	14	18
Cavanaugh Lake Store	13	19
Team No. 12	12	20
Foster's Men's Wear	12	20

## Senior House League

Standings as of Oct. 28

	W	L
Parish Cleaners	24	8
Spaulding Chevrolet	20	12
Chellean Grinding	19	13
Seltz's Tavern	18	14
Dana No. 2	18	14
Wolverine Tavern	18	14
G. E. Boys	17	15
Murphy's Barber Shop	17	15
Schneider's Market	15	17
Dana No. 1	10	22
Wolverine Center	8	24

## Junior House League

Standings as of Oct. 24

	W	L
Wolverine	42	14
Jiffy Mixers	38	18
Parish Cleaners	33	23
Pub Bar	36	20
Gambles	35	21
3-D Sales & Services	30	26
Mid-State Finance	32	24
Boyer Automotive	24	32
Wonder Bar	15	31
Dirty Dozen	16	40

## Tri-City Mixed League

Standings as of Oct. 25

	W	L
Odd Balls	22 1/2	9 1/2
Plintstone's	20	12
Cavanaugh Lake	20	12
Wolverine Early Birds	19	13
Sprague Buick & Olds	19	13
3-D	19	13
Chellean Cleaners	18	14
Wolverine No. 1	16	16
Eibler & Frisinger	13	19
Clear Lake	11 1/2	20 1/2
Don's Standard	7 1/2	24 1/2
Poor Mobil	6 1/2	25 1/2

## Chellean Women's League

Standings as of Oct. 23

	W	L
Chellean Cleaners	24	8
Foster's	21	11
Chellean Lanes	19 1/2	12 1/2
Chellean Milling	19	13
Wolverine	18	14
Jiffy Mixers	17	15
Chellean Grinding	17	15
Palmer Motor Sales	15	17
Immer's	14	18
The Pub	10	22
Schneider's	9 1/2	22 1/2
Zephyr	8	24

## Chellean Women's League

Standings as of Oct. 23

	W	L
Chellean Cleaners	24	8
Foster's	21	11
Chellean Lanes	19 1/2	12 1/2
Chellean Milling	19	13
Wolverine	18	14
Jiffy Mixers	17	15
Chellean Grinding	17	15
Palmer Motor Sales	15	17
Immer's	14	18
The Pub	10	22
Schneider's	9 1/2	22 1/2
Zephyr	8	24

## Chellean Women's League

Standings as of Oct. 23

	W	L
Chellean Cleaners	24	8
Foster's	21	11
Chellean Lanes	19 1/2	12 1/2
Chellean Milling	19	13
Wolverine	18	14
Jiffy Mixers	17	15
Chellean Grinding	17	15
Palmer Motor Sales	15	17
Immer's	14	18
The Pub	10	22
Schneider's	9 1/2	22 1/2
Zephyr	8	24

## Chellean Women's League

Standings as of Oct. 23

	W	L
Chellean Cleaners	24	8
Foster's	21	11
Chellean Lanes	19 1/2	12 1/2
Chellean Milling	19	13
Wolverine	18	14
Jiffy Mixers	17	15
Chellean Grinding	17	15
Palmer Motor Sales	15	17
Immer's	14	18
The Pub	10	22
Schneider's	9 1/2	22 1/2
Zephyr	8	24

# SPORTS CORNER



THE HOUSTON OILERS CAN BOAST OF ONE OF THE COMING YOUNG FULLBACKS IN PRO FOOTBALL HOYLE GRANGER WHO GAINED 119 1/2 YARDS RUSHING IN 1967.

THE MISSISSIPPI STATE GRAD IN OILY WISDOM WAS SECOND TOP RUSHER IN THE AFL AND ALSO CAUGHT 9 PASSES FOR 300 YARDS...

150 games or better: J. Feldkamp, 152-182; D. Graden, 152; H. Rothfuss, 156-151; R. Hummel, 225-177-180; A. Eisele, 170; P. Wurster, 160-160; A. Knickerbocker, 157-153; N. Kern, 168-178; D. Judson, 173-198-145; B. Bush, 162; D. Verwey, 158; B. Fike, 174; D. Miller, 159-174; N. Meabon, 153; B. Weeks, 162; A. Turner, 160-160; H. Morgan, 152-161; A. Alexander, 151; M. E. Sutter, 160; D. Alber, 171-158-161; M. Scott, 151; B. Parish, 180-188; M. Ritter, 178-171-150; R. Johnson, 177-170; P. Shoemaker, 150-170; P. Poertner, 169; D. Frisbie, 161; L. Orlovski, 167; V. Guest, 170; D. Fouty, 157-183; J. Hafner, 161-165-173; G. Kuhl, 157; D. Eisenman, 178-150; A. Boham, 169-177; T. Schaphorn, 161-153-185; G. Baczynski, 158-165; S. Timmerman, 152-205; S. Ringe, 166; H. Ringe, 152-198-160; B. Tirb, 166.

150 games or better: J. Feldkamp, 152-182; D. Graden, 152; H. Rothfuss, 156-151; R. Hummel, 225-177-180; A. Eisele, 170; P. Wurster, 160-160; A. Knickerbocker, 157-153; N. Kern, 168-178; D. Judson, 173-198-145; B. Bush, 162; D. Verwey, 158; B. Fike, 174; D. Miller, 159-174; N. Meabon, 153; B. Weeks, 162; A. Turner, 160-160; H. Morgan, 152-161; A. Alexander, 151; M. E. Sutter, 160; D. Alber, 171-158-161; M. Scott, 151; B. Parish, 180-188; M. Ritter, 178-171-150; R. Johnson, 177-170; P. Shoemaker, 150-170; P. Poertner, 169; D. Frisbie, 161; L. Orlovski, 167; V. Guest, 170; D. Fouty, 157-183; J. Hafner, 161-165-173; G. Kuhl, 157; D. Eisenman, 178-150; A. Boham, 169-177; T. Schaphorn, 161-153-185; G. Baczynski, 158-165; S. Timmerman, 152-205; S. Ringe, 166; H. Ringe, 152-198-160; B. Tirb, 166.

150 games or better: J. Feldkamp, 152-182; D. Graden, 152; H. Rothfuss, 156-151; R. Hummel, 225-177-180; A. Eisele, 170; P. Wurster, 160-160; A. Knickerbocker, 157-153; N. Kern, 168-178; D. Judson, 173-198-145; B. Bush, 162; D. Verwey, 158; B. Fike, 174; D. Miller, 159-174; N. Meabon, 153; B. Weeks, 162; A. Turner, 160-160; H. Morgan, 152-161; A. Alexander, 151; M. E. Sutter, 160; D. Alber, 171-158-161; M. Scott, 151; B. Parish, 180-188; M. Ritter, 178-171-150; R. Johnson, 177-170; P. Shoemaker, 150-170; P. Poertner, 169; D. Frisbie, 161; L. Orlovski, 167; V. Guest, 170; D. Fouty, 157-183; J. Hafner, 161-165-173; G. Kuhl, 157; D. Eisenman, 178-150; A. Boham, 169-177; T. Schaphorn, 161-153-185; G. Baczynski, 158-165; S. Timmerman, 152-205; S. Ringe, 166; H. Ringe, 152-198-160; B. Tirb, 166.

150 games or better: J. Feldkamp, 152-182; D. Graden, 152; H. Rothfuss, 156-151; R. Hummel, 225-177-180; A. Eisele, 170; P. Wurster, 160-160; A. Knickerbocker, 157-153; N. Kern, 168-178; D. Judson, 173-198-145; B. Bush, 162; D. Verwey, 158; B. Fike, 174; D. Miller, 159-174; N. Meabon, 153; B. Weeks, 162; A. Turner, 160-160; H. Morgan, 152-161; A. Alexander, 151; M. E. Sutter, 160; D. Alber, 171-158-161; M. Scott, 151; B. Parish, 180-188; M. Ritter, 178-171-150; R. Johnson, 177-170; P. Shoemaker, 150-170; P. Poertner, 169; D. Frisbie, 161; L. Orlovski, 167; V. Guest, 170; D. Fouty, 157-183; J. Hafner, 161-165-173; G. Kuhl, 157; D. Eisenman, 178-150; A. Boham, 169-177; T. Schaphorn, 161-153-185; G. Baczynski, 158-165; S. Timmerman, 152-205; S. Ringe, 166; H. Ringe, 152-198-160; B. Tirb, 166.

150 games or better: J. Feldkamp, 152-182; D. Graden, 152; H. Rothfuss, 156-151; R. Hummel, 225-177-180; A. Eisele, 170; P. Wurster, 160-160; A. Knickerbocker, 157-153; N. Kern, 168-178; D. Judson, 173-198-145; B. Bush, 162; D. Verwey, 158; B. Fike, 174; D. Miller, 159-174; N. Meabon, 153; B. Weeks, 162; A. Turner, 160-160; H. Morgan, 152-161; A. Alexander, 151; M. E. Sutter, 160; D. Alber, 171-158-161; M. Scott, 151; B. Parish, 180-188; M. Ritter, 178-171-150; R. Johnson, 177-170; P. Shoemaker, 150-170; P. Poertner, 169; D. Frisbie, 161; L. Orlovski, 167; V. Guest, 170; D. Fouty, 157-183; J. Hafner, 161-165-173; G. Kuhl, 157; D. Eisenman, 178-150; A. Boham, 169-177; T. Schaphorn, 161-153-185; G. Baczynski, 158-165; S. Timmerman, 152-205; S. Ringe, 166; H. Ringe, 152-198-160; B. Tirb, 166.

150 games or better: J. Feldkamp, 152-182; D. Graden, 152; H. Rothfuss, 156-151; R. Hummel, 225-177-180; A. Eisele, 170; P. Wurster, 160-160; A. Knickerbocker, 157-153; N. Kern, 168-178; D. Judson, 173-198-145; B. Bush, 162; D. Verwey, 158; B. Fike, 174; D. Miller, 159-174; N. Meabon, 153; B. Weeks, 162; A. Turner, 160-160; H. Morgan, 152-161; A. Alexander, 151; M. E. Sutter, 160; D. Alber, 171-158-161; M. Scott, 151; B. Parish, 180-188; M. Ritter, 178-171-150; R. Johnson, 177-170; P. Shoemaker, 150-170; P. Poertner, 169; D. Frisbie, 161; L. Orlovski, 167; V. Guest, 170; D. Fouty, 157-183; J. Hafner, 161-165-173; G. Kuhl, 157; D. Eisenman, 178-150; A. Boham, 169-177; T. Schaphorn, 161-153-185; G. Baczynski, 158-165; S. Timmerman, 152-205; S. Ringe, 166; H. Ringe, 152-198-160; B. Tirb, 166.

150 games or better: J. Feldkamp, 152-182; D. Graden, 152; H. Rothfuss, 156-151; R. Hummel, 225-177-180; A. Eisele, 170; P. Wurster, 160-160; A. Knickerbocker, 157-153; N. Kern, 168-178; D. Judson, 173-198-145; B. Bush, 162; D. Verwey, 158; B. Fike, 174; D. Miller, 159-174; N. Meabon, 153; B. Weeks, 162; A. Turner, 160-160; H. Morgan, 152-161; A. Alexander, 151; M. E. Sutter, 160; D. Alber, 171-158-161; M. Scott, 151; B. Parish, 180-188; M. Ritter, 178-171-150; R. Johnson, 177-170; P. Shoemaker, 150-170; P. Poertner, 169; D. Frisbie, 161; L. Orlovski, 167; V. Guest, 170; D. Fouty, 157-183; J. Hafner, 161-165-173; G. Kuhl, 157; D. Eisenman, 178-150; A. Boham, 169-177; T. Schaphorn, 161-153-185; G. Baczynski, 158-165; S. Timmerman, 152-205; S. Ringe, 166; H. Ringe, 152-198-160; B. Tirb, 166.

150 games or better: J. Feldkamp, 152-182; D. Graden, 152; H. Rothfuss, 156-151; R. Hummel, 225-177-180; A. Eisele, 170; P. Wurster, 160-160; A. Knickerbocker, 157-153; N. Kern, 168-178; D. Judson, 173-198-145; B. Bush, 162; D. Verwey, 158; B. Fike, 174; D. Miller, 159-174; N. Meabon, 153; B. Weeks, 162; A. Turner, 160-160; H. Morgan, 152-161; A. Alexander, 151; M. E. Sutter, 160; D. Alber, 171-158-161; M. Scott, 151; B. Parish, 180-188; M. Ritter, 178-171-150; R. Johnson, 177-170; P. Shoemaker, 150-170; P. Poertner, 169; D. Frisbie, 161; L. Orlovski, 167; V. Guest, 170; D. Fouty, 157-183; J. Hafner, 161-165-173; G. Kuhl, 157; D. Eisenman, 178-150; A. Boham, 169-177; T. Schaphorn, 161-153-185; G. Baczynski, 158-165; S. Timmerman, 152-205; S. Ringe, 166; H. Ringe, 152-198-160; B. Tirb, 166.

150 games or better: J. Feldkamp, 152-182; D. Graden, 152; H. Rothfuss, 156-151; R. Hummel, 225-177-180; A. Eisele, 170; P. Wurster, 160-160; A. Knickerbocker, 157-153; N. Kern, 168-178; D. Judson, 173-198-145; B. Bush, 162; D. Verwey, 158; B. Fike, 174; D. Miller, 159-174; N. Meabon, 153; B. Weeks, 162; A. Turner, 160-160; H. Morgan, 152-161; A. Alexander, 151; M. E. Sutter, 160; D. Alber, 171-158-161; M. Scott, 151; B. Parish, 180-188; M. Ritter, 178-171-150; R. Johnson, 177-170; P. Shoemaker, 150-170; P. Poertner, 169; D. Frisbie, 161; L. Orlovski, 167; V. Guest, 170; D. Fouty, 157-183; J. Hafner, 161-165-173; G. Kuhl, 157; D. Eisenman, 178-150; A. Boham, 169-177; T. Schaphorn, 161-153-185; G. Baczynski, 158-165; S. Timmerman, 152-205; S. Ringe, 166; H. Ringe, 152-198-160; B. Tirb, 166.

150 games or better: J. Feldkamp, 152-182; D. Graden, 152; H. Rothfuss, 156-151; R. Hummel, 225-177-180; A. Eisele, 170; P. Wurster, 160-160; A. Knickerbocker, 157-153; N. Kern, 168-178; D. Judson, 173-198-145; B. Bush, 162; D. Verwey, 158; B. Fike, 174; D. Miller, 159-174; N. Meabon, 153; B. Weeks, 162; A. Turner, 160-160; H. Morgan, 152-161; A. Alexander, 151; M. E. Sutter, 160; D. Alber, 171-158-161; M. Scott, 151; B. Parish, 180-188; M. Ritter, 178-171-150; R. Johnson, 177-170; P. Shoemaker, 150-170; P. Poertner, 169; D. Frisbie, 161; L. Orlovski, 167; V. Guest, 170; D. Fouty, 157-183; J. Hafner, 161-165-173; G. Kuhl, 157; D. Eisenman, 178-150; A. Boham, 169-177; T. Schaphorn, 161-153-185; G. Baczynski, 158-165; S. Timmerman, 152-205; S. Ringe, 166; H. Ringe, 152-198-160; B. Tirb, 166.

150 games or better: J. Feldkamp, 152-182; D. Graden, 152; H. Rothfuss, 156-151; R. Hummel, 225-177-180; A. Eisele, 170; P. Wurster, 160-160; A. Knickerbocker, 157-153; N. Kern, 168-178; D. Judson, 173-198-145; B. Bush, 162; D. Verwey, 158; B. Fike, 174; D. Miller, 159-174; N. Meabon, 153; B. Weeks, 162; A. Turner, 160-160; H. Morgan, 152-161; A. Alexander, 151; M. E. Sutter, 160; D. Alber, 171-158-161; M. Scott, 151; B. Parish, 180-188; M. Ritter, 178-171-150; R. Johnson, 177-170; P. Shoemaker, 150-170; P. Poertner, 169; D. Frisbie, 161; L. Orlovski, 167; V. Guest, 170; D. Fouty, 157-183; J. Hafner, 161-165-173; G. Kuhl, 157; D. Eisenman, 178-150; A. Boham, 169-177; T. Schaphorn, 161-153-185; G. Baczynski, 158-165; S. Timmerman, 152-205; S. Ringe, 166; H. Ringe, 152-198-160; B. Tirb, 166.

150 games or better: J. Feldkamp, 152-182; D. Graden, 152; H. Rothfuss, 156-151; R. Hummel, 225-177-180; A. Eisele, 170; P. Wurster, 160-160; A. Knickerbocker, 157-153; N. Kern, 168-178; D. Judson, 173-198-145; B. Bush, 162; D. Verwey, 158; B. Fike, 174; D. Miller, 159-174; N. Meabon, 153; B. Weeks, 162; A. Turner, 160-160; H. Morgan, 152-161; A. Alexander, 151; M. E. Sutter, 160; D. Alber, 171-158-161; M. Scott, 151; B. Parish, 180-188; M. Ritter, 178-171-150; R. Johnson, 177-170; P. Shoemaker, 150-170; P. Poertner, 169; D. Frisbie, 161; L. Orlovski, 167; V. Guest, 170; D. Fouty, 157-183; J. Hafner, 161-165-173; G. Kuhl, 157; D. Eisenman, 178-150; A. Boham, 169-177; T. Schaphorn, 161-153-185; G. Baczynski, 158-165; S. Timmerman, 152-205; S. Ringe, 166; H. Ringe, 152-198-160; B. Tirb, 166.

150 games or better: J. Feldkamp, 152-182; D. Graden, 152; H. Rothfuss, 156-151; R. Hummel, 225-177-180; A. Eisele, 170; P. Wurster, 160-160; A. Knickerbocker, 157-153; N. Kern, 168-178; D. Judson, 173-198-145; B. Bush, 162; D. Verwey, 158; B. Fike, 174; D. Miller, 159-174; N. Meabon, 153; B. Weeks, 162; A. Turner, 160-160; H. Morgan, 152-161; A. Alexander, 151; M. E. Sutter, 160; D. Alber, 171-158-161; M. Scott, 151; B. Parish, 180-188; M. Ritter, 178-171-150; R. Johnson, 177-170; P. Shoemaker, 150







### Club and Social Activities

**BEACON LIGHT EXTENSION**  
Beacon Light Extension Study group met at 8 p.m. Oct. 23 at the home of Mrs. Jack Pfeiffer. Mrs. Allen Alker and Mrs. Lawrence Kruse were co-hostesses. There were nine members present. The next meeting will be at the home of Mrs. Alice Pratt at 8 p.m. Nov. 10.

**ROGERS CORNERS EXTENSION**  
Thirteen members of the Rogers Corners Extension Group met at the home of Elsie Hinderer and departed for the community activity center "Holiday Ideal" open house Oct. 15. The regular meeting began at 9 p.m. with the reading of the Women's creed.

The roll call topic was vacations for last year. The minutes were read and approved, as was the treasurer's report. The next meeting will be Nov. 10 at 8 p.m. at the home of Mrs. Robert Higgins, 2097 South Fletcher with Mrs. Loren Koenig as co-hostess. Mrs. Earl Hush will give a lesson concerning "You and Your County's Water."

Roll call topic will be "something we are thankful for." A motion to bring a basket filled with non-perishable items to the November meeting was passed. This would be donated to the Social Service.

The meeting was adjourned and slides concerning water pollution were shown. Refreshments were served.

### First Aid Class Series Will Start Nov. 17

A Standard First Aid Class, open to residents of Washtenaw county, is scheduled at the Red Cross Operations Center, 2720 Packard Rd., Ann Arbor. The class will begin Thursday, Nov. 7, and continue for five weeks from 7:30 p.m. till 9:30 p.m., with Thanksgiving week off. Class will be completed Dec. 12.

Interested persons should call the Red Cross at 971-5300 to register for the class. Enrollment is limited. The instructors will be Earline Flagg and Mary Ann Wamaker.

Enrollees must be a minimum of 14 years of age to be eligible to take the class. United Fund Contributions make the instruction available without charge.

### CHARM BEAUTY SALON

4396 CLEAR LAKE ROAD  
(Formerly of Glass Lake)

Two Operators - Hair Styling and Wig Service

PHONE 475-2700

### Fall Hair-Do

Our operators are trained and experienced with up-to-date hair styles. We also offer service to wigs and wiglets.

Open Monday thru Saturday and Mon., Wed. and Thurs. evenings.

Call 475-5421 for appointments.

### VILLAGE BEAUTY SALON

JEAN SWEET, Owner  
Operators: Judy, Pansy, Angie, Sandy and Mary.



Mrs. Gerald Kenney

### Regina M. Eder, Gerald Kenney Speak Vows at St. Mary Church

Regina Marie Eder became Mrs. Gerald Kenney in a Nuptial High Mass wedding ceremony Oct. 26. The vows were spoken at St. Mary Catholic church before 500 guests and the Rev. Fr. David Harvey of St. John's Catholic church in Ypsilanti.

The bride is the daughter of Mr. and Mrs. George Eder of 628 Taylor and the bridegroom is the son of Mrs. William Kenney and the late Mr. Kenney, of N. Waters Street, Owosso.

Mrs. John Dettling, cousin of the bride, and Mrs. Donald Doll were vocalists and Miss Angelina Eder, cousin of the bride provided organ music for "On This Day, O Beautiful Mother," and "Psalms Angelicus."

The bride was given in marriage by her father. She wore a floor-length gown of silk organza over taffeta with extending train. Alecon lace appliques on the gown, long sleeves, and scalloped neckline were features of her costume. The fingertip veil of silk organza was caught with a petal headband. She carried a colonial bouquet of white roses and stephanotis with an orchid in the center.

Matron of honor was Mrs. James Schook, sister of the bride, 216 S. Washington St., Manchester. She wore a burgundy emire waist floor-length gown with a pink train, matching headpiece and veil and carried a French colonial bouquet of pink carnations with burgundy roses.

Bridesmaids were Miss Rosine Eder, sister of the bride, Mrs. Elmer Totten of Plymouth and Mrs. Duane Downer of Chelsea. They wore pink, empire waist gowns

with burgundy trains and matching headpieces and veils. Their bouquets were of burgundy and pink roses in a colonial style.

The bride's mother wore a light blue three-piece knit suit with black patent accessories and a white rose corsage. The mother of the bridegroom wore a royal blue dress with matching accessories and a white rose corsage.

Miss Deborah Schantz, a niece of the bride, was flower girl. She was dressed in a similar costume to those of the bridesmaids. John Kenney, nephew of the bridegroom, was ring-bearer.

Best man was Thomas Wazny of Lansing. Ushers were James Eder, brother of the bride, and Robert Flynn, Esquires were John David and Andrew Kenney, brothers of the bridegroom. A reception at the Rod and Gun Club followed. Mrs. August Doron, aunt of the bride, served wedding cake with the help of Mrs. Norman Lester and Miss Mary Kenney, sisters of the bridegroom, and Mrs. Dean Guenther, Mrs. David Hopkins, sister of the bridegroom, supervised the guest book.

The couple departed for a short wedding trip through the southern states and will live at N. Shawansee St., Owosso, following their honeymoon.

The bride is a graduate of Chelsea High school, Alexandra School of Cosmetology and is owner and operator of Tina's Beauty Shoppe in Chelsea.

The bridegroom is a graduate of Owosso High school, served in the army for two years and is now employed at the Sunset Inn in Owosso.

### Mr. and Mrs. Elmer E. Winans Mark 60th Wedding Anniversary

In observance of the 60th wedding anniversary of Mr. and Mrs. Elmer E. Winans their sons and daughters and their spouses entertained Sunday, Oct. 27, at a family dinner in their home at The Canopy, in Brighton.

The sons and daughters present for Sunday's celebration are Mrs. Howard Park (Alberta) of Flint; Mrs. Donald Oestle (Mary Jean) of Ann Arbor; Mrs. Ann Arbor; Robert of Dundee; and George Charles and David Winans of Chelsea.

Two of the grandchildren were unable to attend - James Park who is in the U.S. Navy and is currently stationed in Florida, and Mrs. Larry Liberty, the former Sandra Winans, who with her husband, is spending two years in Guam, where both are teaching. A surprise guest at the dinner was Albert Steinbach, a life-long friend of the couple.

### SUNDAY'S SERMON

★ A Smile

Give the world a smile, if that is the best you have to give. Make some kind of a contribution to show that you are grateful for the air you breathe and for the sunshine that brightens your morning.

Turn to the sunny side of life, where it's never lonely. It may not be perfect, but life is not really supposed to be always a bed of roses—without thorns.

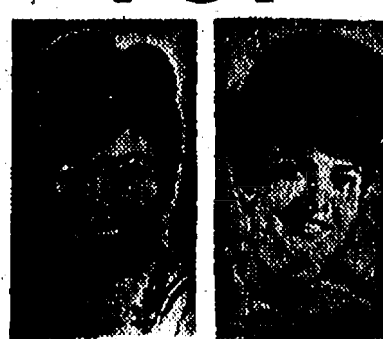
We must find temptation along the way. Most every day will present a challenge of some kind of another. For this is life. A living experience—changing day to day.

Nothing in life is completely static. Even the most ancient tree in the forest loses its leaves in the fall, grows new foliage comes a new spring.

If we live life with a will, we grow. We never cease to grow, until death. If we do good along the road of life, then we know an inner growth, an added strength, a moral uplifting.

If you cannot give the world—or a single friend or neighbor—a helping hand; at least give out with a smile. Maybe it will be enough to brighten someone's day.

### TIPS for your TOP



TODDY and FRAN

It's November—and much as we hate to mention the unpleasant, it's not so bad when we can think of a balance to offset it. This is a month with a lot of breezy days that blow us around like dead leaves; to counteract the miseries of wind and rain in a new hairdo, why not come out where you can park adjacent to the shop, with but a step from door to car in the wind. It's a short drive from wherever you live, and we feel our easy-to-park-in free lot is a joy to all our customers. We're open evenings except Saturday for still more convenience to you. Give us a call at

Magie Mirror Beauty Salon  
Phone 665-0816  
5585 Jackson Rd., Ann Arbor

### WCS Members Will Observe Annual Nation-Wide Call to Prayer, Self-Denial

Members of the Women's Society of Christian Service of the First United Methodist church of Chelsea will participate next week in one of the most important annual observances of United Methodist women throughout the United States.

The "Call to Prayer and Self-Denial," initiated in 1887, focuses on guided mission study, a much needed offering for special world and national projects, and a deepened spiritual life. More than 1,541,500 women in 33,000 societies and guilds in all 50 states will join in the observance.

The call is sponsored by the Women's Division of the United Methodist Board of Missions. The division, one of the four major units of the Board of Missions, is the national body through which all local Women's Societies and Guilds function.

Theme of the 1968 Call to Prayer and Self-Denial is "Christ, the Giver of Life," inspired by the opportunities to be made possible by gifts this week and the study Coming to Life, by Dr. Ernest W. Saunders, dean of Garrett Theological Seminary and professor of New Testament Interpretation.

Each year the Women's Division designates certain mission projects in the United States and overseas, as beneficiaries of the offering which is given as part of the Call to Prayer and Self-Denial. This year the projects chosen are: Building Fund for Educational Work for Schools—in the

United States; Urban Ministries in Asia.

The "Quiet Day" service, "Search for a Meaningful Existence," was written by Miss Ethelene Sampley of Fort Pierce, Fla. She is well known as a Methodist writer, retreat leader, and teacher in Summer Schools of Christian Mission.

The observance for women of the First United Methodist Church of Chelsea will be held at 8 p.m., Nov. 6, as the program for their regular monthly WCS meeting.

### Home Economics

#### Study Groups

#### Calendar

Nov. 2—Young Homemakers Study Group, home of Mrs. Diane Horning, 11834 Pleasant Lake Rd., Manchester. Co-hostess, Mrs. Lella Bauer.

Nov. 4—Domestic Engineers Study Group, home of Mrs. Herbert Dible, 7650 Waters Rd., Ann Arbor.

Telephone Your Club News To GR 5-3581.

### Co-Op Nursery Notes

Chelsea Co-op Nursery children have been talking about community friends in recent sessions. They learned about the helping hands of neighbor, school bus drivers, doctors and nurses.

Dr. Waidyke visited the four-year-olds. Nurses Mrs. Waller and Mrs. Catell visited the three-year-olds and non-assist sessions. They learned about some of the equipment doctors use and how doctors help us. More visitors are expected soon.

Halloween has highlighted the week's activities. Each child brought in a pumpkin and with adult help, designed and cut his own jack-o-lantern. A costume party climaxed the celebration of Halloween.

### HIGH TREES

In rain-washed southwest Australia, hardwood trees grow nearly 300-foot high. They are so durable that foresters fell them with explosives.

**VACUUM CLEANERS**  
**ELECTROLUX**  
SALES and SERVICE  
**JAMES COX**  
Ph. 428-2931 or 428-8221  
Manchester

### WATERLOO BEAUTY SHOP

Operated By Rosemary Klink.

Open Tues. thru Sat., 8 a.m. to 6 p.m.

CALL FOR APPOINTMENT  
**475-8895**



### CONGRATULATIONS!

Sally Higgins from our Chelsea Salon (The House of Orient) has won the Grand Master's Award in hairstyling.

Sally is pictured above with her model, Pat Schiller. (Pat's on the left.)

Sally is new to competition styling. (She's only been in one other contest) so we're naturally very proud of this achievement.

### House of Orient Hairstylists

103 W. Middle St., Chelsea Phone GR 5-8196

We, the undersigned, endorse the candidacy of **PATRICK J. CONLIN** for District Judge because he lives in the Western part of the County, is an experienced Trial Lawyer with Judicial experience and will hold Court in our town.

### ENDORSED BY

- |                       |                                 |
|-----------------------|---------------------------------|
| Ronald Satterthwaite  | Robert G. Foster                |
| Paul Schabbe, Jr.     | George Winans                   |
| F. W. Merkel          | Mr. and Mrs. Wallace Wood       |
| N. L. Merkel          | Mr. and Mrs. L. D. Guinan       |
| George A. Staffan     | Mr. and Mrs. Warren Welton      |
| George Heydlauff      | Mr and Mrs. Gerald D. Grohnert  |
| Lloyd Heydlauff       | Harold Salyer                   |
| Robert L. Daniels     | Mitchell Picklesimer            |
| Joseph M. Merkel      | Mr. and Mrs. Henry Merkel, Sr.  |
| George Merkel         | Maurice Hoffman                 |
| Joseph T. Merkel, Sr. | Gertrude Young                  |
| Leonard Eder          | William K. Bloess               |
| Paul E. Mann          | Mr. and Mrs. William Rademacher |
| David Strieter        | Harold Jones                    |
| George L. Palmer      | Mr. and Mrs. Robert Musolf      |
| Daniel J. Murphy      | Anton Nielsen                   |
| I. (Red) Eder         | Mr. and Mrs. James Gaken        |

### Why Not Have the Best?



REGISTERED  
**Keepsake**  
DIAMOND RINGS

Every Keepsake Engagement center diamond is free of flaws, even when magnified ten times.

### WINANS Jewelry Store

5585 Jackson Rd., Ann Arbor

**Pamper your home with a Palace Quality housecleaning**  
PHONE JIM COLBY  
Daytime:  
Ann Arbor 761-2699  
Evenings:  
Ann Arbor 761-2699

**Palace Quality LAUNDERERS/DRY CLEANERS**



PHONE GR 9-6651







## SAFE DRIVERS SAVE

with Community Service  
Auto  
Insurance



**DAVID D. ROWE**  
157 E. Summit St., Chelsea  
PHONE 475-8065

**FARM BUREAU  
INSURANCE**

Companies of  
Michigan

FB

## Loans Can Protect Farm Prices, Says ASC Chairman

Growers are cheating themselves if they market their crops at below the Commodity Credit Corporation loan levels, according to Sam Dolezky, chairman, Washington Agricultural Stabilization and Conservation Committee.

The price-support commodity loan program was developed as a means of helping farmers sell their crops at a time when market conditions are most favorable, the chairman points out, and that time normally is not at harvest-time when supplies are ample and prices are likely to be down.

He explains that the government loan gives an immediate return to the participating farmer at harvest-time, and at the same time the farmer retains control of his crop. By storing it for a while and then repaying the loan and selling the crop later after the marketing peak, the grower fre-

quently can get a much better price. How effective the loan is in protecting farm prices really can be decided only by the farmer, Chairman Dolezky emphasized. Only he can make the program operate as intended.

Local loan rates for 1968 crops, which are adjusted for individual crops according to grade and quality, are as follows: wheat, \$1.20 per bushel; corn, \$1.10 per bushel; oats, \$.85 per bushel; rye, \$1.08 per bushel; barley, \$.88 per bushel; soybeans, \$2.40 per bushel.

The chairman reminds farmers, also, that the loan is only a part of the total price-support protection available to participating growers of such major crops as wheat, corn, grain sorghum, and cotton. A grower who helps to stabilize crop supplies by taking part in commodity diversion programs also receives a price-support payment on the crop (marketing certificate for wheat) which substantially boosts his total cash returns from his crop. The price-support (or marketing certificate) payment is separate from the program payments made for diverting acreage from production into a conserving use.

## Junior Varsity Ramps Over Saline, 46-0

The Chelsea JV's remain undefeated after their 46-0 victory over Saline Thursday. They now face the Dexter team with a seven-game winning streak in their last game of the season.

Coach Jon Schaffner feels that the 19-0 half-time score was a poor measure of the Saline performance. The Saline team is a "much better ball club than the score indicates," according to Schaffner.

Chelsea kicked off and the Saline team marched down the field toward an apparent score when they were stopped by a 15-yard penalty. The Hornets moved the ball well but were plagued with fumbles and penalties during the entire first half.

In the second half, Chelsea tallied three easy touchdowns from fumbles recovered inside Saline's 20-yard line.

Chelsea recovered a total of six Hornets fumbles during the game, with Mitch Heard grabbing three, and Dave Porath, Rich Westcott and Jeff Bust one each.

The Chelsea JV's will close their season tonight as they face Dexter in a 7 p.m. away game.

## CUB SCOUT NEWS

### DEN 1, PACK 435

On Oct. 24 we held our Pack meeting at South school. Each den put on a skit either about Halloween or Columbus Day.

Den 1 decorated the gym with pumpkins and orange and black crepe paper.

Donald Hall, scribe.

### PACK 435

Awards presentations and the welcoming of new members were highlights of the meeting of Pack 435 last Thursday at North Elementary School.

Ralph Frisch presented the National Summertime Award to Richard Kalmbach and Ron Kiel following presentation of colors. The pack, dens and Webelos received this award for high attendance at its summer activities.

Six new cubs were welcomed to the pack and were presented with bobcat pins and wolf books. Jerald Benjamin, Mark Bucholz, Kevin Heller, Robert Jennings, Matthew McClear and Robert Walker were the new members.

Cubmaster Kalmbach also presented Webelos Steve Klink and Jon Spaulding sportsman and athlete awards. Brad Myers and Kirk Steinway each received wolf patches with gold and silver arrow points.

The cubs presented a parade of paper sack masks and enjoyed pinning the nose on the jack-o-lanterns and eating apples from a string. Cider and donuts were served.

### PACK 415

Pack 415 held their October pack meeting Tuesday night, Oct. 22 in the high school cafeteria. The meeting was opened at 7:30 p.m. with Den 1 leading the flag ceremony and pledge of allegiance.

Cubmaster Cecil Clouse then presented the following awards: Bobcat pins to new cubs David Dawson, Billy Klobueher, Mark Shippey, Brian Sova, Robert Conley, Danny Sager and Richard Bauer. Wolf patches were given to Mike Seyfried and Jerry Lafontaine. Silver arrow was given to Gregg Slocum. Second year perfect attendance pin, two-year service star and a showmanship pin were given to Dennis Bauer.

## BIBLE VERSE TO STUDY

"... Let there be no strife. I pray thee, between me and thee."

1. Who is the author of this request?
2. To whom was he speaking?
3. What was the question between them?
4. Where may this statement be found?

(Answers on page 15)

### PAINTING TIP

Want to improve the appearance of a square room? Paint at least one of the walls a different color from the others. Another idea is to paint opposite walls a color darker than the other two to make the room seem more oblong.

Best way to sparkle up a kitchen!

**Dutch Boy**  
**SATIN EGGSHELL**  
ALKYD SEMI-GLOSS ENAMEL

It's the bright finish, the right finish for walls and woodwork in kitchens, baths, playrooms—any "busy" rooms. Wonderfully easy to apply, there's no painty odor and it dries to a smooth, semi-gloss finish that takes many a repeated scrubbing. Sparkle up your rooms with these lovely and easy-to-keep-lovely enamels! Come in—ask to see the lovely colors.



**On Sale Friday & Saturday**

**Dutch Boy Architectural Paints, White Only**

**LATEX INTERIOR FLAT** \$3.99  
Per Gallon, Only

**LATEX EXTERIOR** \$4.99  
Per Gallon, Only

**MERKEL BROS.**

*A Name to Remember for Law and Order*



**Robert FINK**

**For District Judge**

**20 YEARS JUDICIAL EXPERIENCE**

"Another well-qualified candidate (repeat: you can vote for three) is Robert V. Fink of Ypsilanti, who has served as Circuit Court Commissioner for 20 years. That post, too, will be replaced by a District Court on January 1; and Robert Fink's record merits his election to the District bench."

—Saline Reporter Editorial, Oct. 3, 1968

Vote the Non-Partisan Ballot

**ROBERT V. FINK for DISTRICT JUDGE**

NOVEMBER 5, 1968

# WHAT ARE THEY SAYING ABOUT MARV ESCH?

"Congressman Esch has consistently sought our opinions on important issues. His diligent effort to represent us through full communication is to be commended." The Ad-Venture, 3/6/68

"We received our Social Security check August 17. We want you to know one small family in Michigan appreciates what you have done." A family from Pinckney

"... thank you for the interested help you extended in getting our HEW approval for our new facility updated." Mrs. Arlie D. Cooper, Secretary, Lenawee Medical Care Facility, 5/28/68

"A bi-partisan investigating commission could... show how federal money can be efficiently spent. Rep. Esch is on the right track." Adrian Daily Telegram, 9/4/68

"I want to thank you for taking an interest... concerning our son's health. I was pleased by the attention the Army officials gave his case." A mother from Adrian

"Thanks again, for your help in receiving the Sewage Plant Grant... Sincerely, you are doing an excellent job. Marv and people in our area are aware of it." Mayor Clyde Evans, Luna Pier, 1/30/68

"... Rep. Esch, in his first congressional term, is winning a place for himself among the party leaders in Washington." The Monroe Evening News, 11/4/67

"... Marvin Esch, an articulate Michigan Ph.D. ... a prototype of the new young GOP breed, sensitive to the problems of the cities and the slums..." Newsweek Magazine, 9/25/67

"Your support, advice and counsel were key factors in gaining our extension and we are sincerely grateful. We feel that our work is making a significant contribution in the fight against crime..." The Rev. Stephen H. Knight II, Project Return, Plymouth, 6/4/68

Republican  
November 5



**Keep Congressman MARV ESCH  
Working For You In Washington**

People for Esch Committee, Ray Bishop, Chairman



## NEW FROM IDS



The objective of this mutual fund is to provide growth possibilities for investors.

Normally the Fund will invest in common stocks of companies which appear to have a high degree of competence in technology, marketing or management. Such companies would tend to operate in areas where important economic and technological changes are taking place, thus offering potential for significant growth.

For a free prospectus, clip this coupon.

INVESTORS DIVERSIFIED SERV., INC.  
DIVISIONAL SALES OFFICE  
4601 W. SAGINAW, LANSING, MICH. 48917

I would like to have the free prospectus describing this "new dimensions" fund.

Name \_\_\_\_\_  
Address \_\_\_\_\_  
City \_\_\_\_\_ State \_\_\_\_\_ Zip \_\_\_\_\_

Or contact with this Divisional Sales Office may be made through local representatives:

R. W. EDER ..... 479-7281  
A. W. LOYD ..... 665-7856

## FEWER DONKEYS

Dublin—The Irish donkey, once used for agricultural purposes, has become such a demand that donkey dealers aren't able to supply demand. Donkeys are now popular as children's pets and most Irish donkeys are exported to England.

## OLD FRUIT

Oranges are about the oldest fruit known to man. At first, according to history, no one thought to eat them, probably because the first oranges were about the size of a berry and quite bitter.

YES

WE ARE MAKING  
LONG-TERM FARM  
REAL ESTATE  
LOANS

SEE US



Ph. 665-6139 2221 Jackson Ave.  
Ann Arbor, Mich. 48106  
P. O. Box 1006

## Girl Scout Notes

## TROOP 98

Girl Scout Troop 98 met Wednesday afternoon, Oct. 23 at the Methodist church. We are deciding on where to go for our hayride. We went into patrols to discuss which badge to work toward. A visitor from Kinder Klub is scheduled to discuss the St. Louis School with us. Dues and attendance were counted and the meeting was closed.

Mary K. Slocum, scribe.

## TROOP NO. 98

Troop 98 met Wednesday, Oct. 30. The meeting was called to order and conducted by Debra Fitzsimmons. Mrs. Ewald from the Kinder Klub discussed the St. Louis School with us. We separated and held patrol meetings. Dues and attendance were accounted for and the meeting was closed.

Mary K. Slocum, scribe.

## TROOP 82

Girl Scout Troop 82 opened the Oct. 23 meeting with a flag ceremony presented by Diana Fletcher, Barbara Roy, Sue Ann Schuelke, and Kathy Scott. The Pledge of Allegiance and the song "America, the Beautiful" were given. Refreshments were furnished by Given Graham.

We discussed plans for an outing Saturday morning and rehearsed our program for our Mothers' Visit. The meeting closed with "Taps."

On Oct. 26, the girl scouts met at the Municipal Building at 10 a.m. and distributed notices on

the coming election to the Chelsea Business district and Saturday morning shoppers. This was work for our Active Citizen badge. We then went to Mrs. Philip Roy's home for elder and donuts.

Sue Schuelke, scribe.

## TROOP 53

We have been quite busy lately. We planned and took a hike to Silver Lake. Patrol 1 did the cooking, Patrol 2 did the cleaning, Patrol 3 did the fire and Patrol 4 carried supplies.

We had a costume Halloween party. We tied apples to the flag pole and hit them off, and passed fruit loops on a toothpick. Tammy Lorenz and Brenda Shadoan won the costume contest. Patrol leaders chose a badge for their patrol to work on.

Susan Schulze, scribe.

## Proposed Area Vo-Tech Plan Will Be Studied

Featured speakers at a Nov. 13 Washtenaw County School district meeting will be Dr. George Raab, superintendent of schools for Bucks county, Pa., and James Ross, principal of the Upper Bucks County Area Vocational-Technical Center. They will be concentrating on the proposed vocational program here as compared to a working model system.

These two leaders of a vocational education system that has become a model which attracts visitors from around the world will be of interest to persons concerned with Washtenaw County Vocational Education Project.

Bucks county has two operating vocational centers and a third is scheduled to open next fall. Pennsylvania is expected to have 50 vocational centers in operation by this time next year.

Though Dr. Raab is not a vocational educator, he helped pioneer the shared-time area vocational center approach to vocational education and is nationally recognized for his efforts.

The public meeting is 8 p.m. Wednesday, Nov. 13 at the Ann Arbor Community Center, 625 N. Main St., Ann Arbor.

Since a special election of the vocational education issue is planned for Dec. 18, this meeting will serve to inform Michigan residents of a working model vocational educational system and the status of vocational education in Michigan. The latter subject will be described by Ralph Wenrich, professor of vocational education at the University of Michigan and chairman of the board of trustees of Washtenaw Community College.

Earl Shaffer, consultant for vocational education for the Washtenaw Intermediate school district, will describe the proposed area vocational education program. Audience questions will be answered by these speakers in panel form.

## Bible Verse Answers . . .

1. Abram.
2. To his nephew, Lot.
3. A quarrel between their shepherds and herdsmen over grazing rights.
4. Genesis 13:8.

## Homemaking Hints

Instead of trying to match the color of your wall paints exactly with drapery or upholstery fabric, select paint colors which will harmonize with your furnishings. The difference in texture between flat walls and cloth makes such reflect light differently so that an exact color match is virtually impossible.

When purchasing a new appli-

ance, be sure to get a thorough demonstration of just how it operates. Keep the operation manual near at hand. If you purchase a large appliance, ask for a demonstration after it is installed in your home. Appliance dealers say many "trouble" calls are needless, wind up with the repairman showing the customer how to operate her equipment.

Ninety percent of the people who say they talk too much are accurate.

Speeches are made for two purposes—to tell the truth or to hide the truth.

AGE 23

Married Male Driver

Your A-O man will save you money on your car insurance. No surcharge or higher rate. See your A-O man—he's all out for you.

A. D. MAYER AGENCY, INC.

"Your Protection Is Our Business"  
115 Park St. Chelsea  
Phone 479-5061

Auto-Owners  
INSURANCE COMPANY  
Home office at 1000 Michigan Ave., Detroit, Mich.

# GIVE CHELSEA REPRESENTATION . . . ELECT CONLIN DISTRICT JUDGE



VOTE TUESDAY for  
"PAT"

CONLIN

for

DISTRICT JUDGE

Your Vote Counts for  
Integrity and Leadership

Chelsea for Conlin Committee

## CHECK ALL THE MANY UNIQUE



## MEMBERSHIP SERVICES

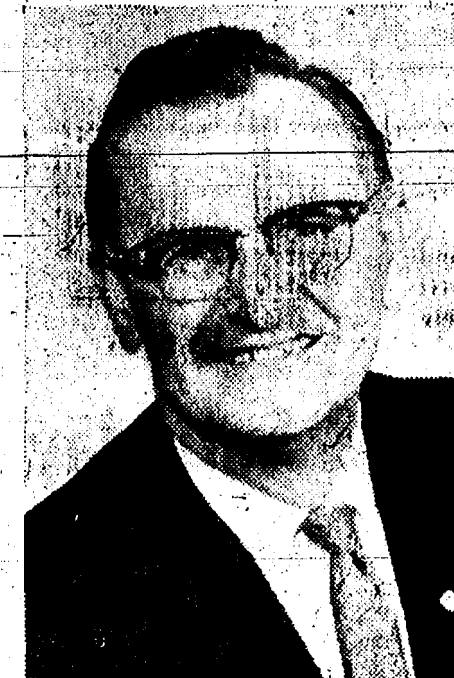
- ☒ Expert Travel Guidance
- ☒ Low Cost Car Financing
- ☒ Emergency Road Service
- ☒ Travelers Checks
- ☒ Personal Accident Insurance
- ☒ World Wide Escorted Tours
- ☒ Motor News Magazine
- ☒ World Wide Travel Service
- ☒ \$5000 Bail-Bond Certificate
- ☒ Civic Services
- ☒ Many Other Services

You Lead the Way  
with Triple-A

RAY JOHNSTON  
1200 S. Main Ann Arbor  
Phone 665-7701

# RE-ELECT THOMAS G. SHARPE

REPUBLICAN



REP. THOMAS G. SHARPE

Full-time  
Legislator

Your  
continued support  
will be appreciated.

State Representative

# THERE IS NO SUBSTITUTE for EXPERIENCE!

Never in the history of the United States has there been a crisis to compare with the current nation-wide war against crime. Crime affects every man, woman and child in this nation.

Jerry Bronson's record as prosecutor in Oakland County has been an encouraging factor in this all-out fight. His constant vigilance and drive against the narcotics racket, consumer fraud, vicious criminals such as motorcycle terrorists and the Mafia is well known and an indication of the attitude of the type of man we need interpreting our laws.

Bronson is a man of ethics, compassion and understanding. He believes in the principle of law over anarchy.

Support S. Jerome Bronson for Appeals Judge



# GENERAL ELECTION

To the Qualified Electors:  
NOTICE IS HEREBY GIVEN:

That a General Election will be held in the

## TOWNSHIP OF LIMA

(Precinct No. 1)  
County of Washtenaw, State of Michigan

### LIMA COMMUNITY HALL

within said Township on

**TUESDAY, NOVEMBER 5, 1968**

For the Purpose of Electing the Following Officers, viz:

**NATIONAL** President and Vice-President of the United States

**CONGRESSIONAL** Representative in Congress

**LEGISLATIVE** State Representative

**STATE** Two Members of the State Board of Education, Two Regents of the University of Michigan, Two Trustees of Michigan State University, Two Governors of Wayne State University.

**COUNTY** Prosecuting Attorney, Sheriff, County Clerk, County Treasurer, Register of Deeds, Auditor in Counties electing same, Drain Commissioner, Coroners, Surveyor, One County Supervisor from each District, and such other Officers as are elected at that time.

**TOWNSHIP** One Trustee

AND FOR THE PURPOSE OF ELECTING THE FOLLOWING NON-PARTISAN OFFICERS, VIZ:  
Justice of the Supreme Court  
Judge of the Court of Appeals  
Judge of the District Court

AND ALSO TO VOTE ON THE FOLLOWING CONSTITUTIONAL AMENDMENTS:

1. Proposed Amendment to remove the present restriction against the adoption of a Graduated Income Tax.
2. Referendum on Act 6 of the Public Acts of 1967 (Daylight Savings Time).
3. Referendum on Act 76 of the Public Acts of 1968 (Proposal relating to Bonding to Abate Water Pollution).
4. Referendum on Act 257 of the Public Acts of 1968 (Proposal relating to Bonding for Public Recreational Purposes).
5. Proposed Amendment to permit the Election of Members of the Legislature during their term of office to another State Office.

AND ALSO TO VOTE ON THE FOLLOWING COUNTY PROPOSITION:  
"Shall the tax limitation on the total amount of general ad valorem taxes which may be imposed each year for all purposes upon real and tangible personal property in Washtenaw County, Michigan, be increased as provided in Section 6, Article IX of the Constitution of Michigan for a period of three years from (1969-1971) both inclusive by one (1) mill, (one dollar per thousand of State equalized valuation) with the revenue to be allocated to and expended by the Board of County Road Commissioners of the County of Washtenaw exclusively for Highway, road and street purposes to expedite the construction of roads and streets in Washtenaw County?"

#### COUNTY TREASURER'S STATEMENT

(As required by Act 288, Public Acts of Michigan, 1947)  
I, Sylvester A. Leonard, County Treasurer of the County of Washtenaw, State of Michigan, do hereby certify that, according to the records of this Office, as of September 6, 1968, the total of all voted increases in the tax rate limitation, above the 18 mills established taxable property in Washtenaw County, State of Michigan, in said County, is as follows:

Local Unit	County of Washtenaw	Voted Increase	Increase Effective
Ann Arbor Township	1968-1971 Incl.	1 1/2 Mills	1967-1971 Incl.
Augsburg Township	1968-1971 Incl.	1 1/2 Mills	1967-1971 Incl.
Bridgewater Township	1968-1971 Incl.	1 1/2 Mills	1967-1971 Incl.
Dexter Township	1968-1971 Incl.	1 1/2 Mills	1967-1971 Incl.
Freedom Township	1968-1971 Incl.	1 1/2 Mills	1967-1971 Incl.
Lima Township	1968-1971 Incl.	1 1/2 Mills	1967-1971 Incl.
Lodi Township	1968-1971 Incl.	1 1/2 Mills	1967-1971 Incl.
Lyndon Township	1968-1971 Incl.	1 1/2 Mills	1967-1971 Incl.
Manchester Township	1968-1971 Incl.	1 1/2 Mills	1967-1971 Incl.
Northfield Township	1968-1971 Incl.	1 1/2 Mills	1967-1971 Incl.
Salem Township	1968-1971 Incl.	1 1/2 Mills	1967-1971 Incl.
Saline Township	1968-1971 Incl.	1 1/2 Mills	1967-1971 Incl.
Scio Township	1968-1971 Incl.	1 1/2 Mills	1967-1971 Incl.
Sharon Township	1968-1971 Incl.	1 1/2 Mills	1967-1971 Incl.
Superior Township	1968-1971 Incl.	1 1/2 Mills	1967-1971 Incl.
Sylvan Township	1968-1971 Incl.	1 1/2 Mills	1967-1971 Incl.
Webster Township	1968-1971 Incl.	1 1/2 Mills	1967-1971 Incl.
York Township	1968-1971 Incl.	1 1/2 Mills	1967-1971 Incl.
Ypsilanti Township	1968-1971 Incl.	1 1/2 Mills	1967-1971 Incl.
Washtenaw Community College	1968-1971 Incl.	1 1/2 Mills	1967-1971 Incl.
Oakland Community College	1968-1971 Incl.	1 1/2 Mills	1967-1971 Incl.
Schoolcraft Community College	1968-1971 Incl.	1 1/2 Mills	1967-1971 Incl.
Washtenaw County Intermediate School District	1968-1971 Incl.	1 1/2 Mills	1967-1971 Incl.
Ingham County Intermediate School District	1968-1971 Incl.	1 1/2 Mills	1967-1971 Incl.
Jackson County Intermediate School District	1968-1971 Incl.	1 1/2 Mills	1967-1971 Incl.
Lenawee County Intermediate School District	1968-1971 Incl.	1 1/2 Mills	1967-1971 Incl.
Liveston County Intermediate School District	1968-1971 Incl.	1 1/2 Mills	1967-1971 Incl.
Oakland County Intermediate School District	1968-1971 Incl.	1 1/2 Mills	1967-1971 Incl.
Ann Arbor Public Schools District	1968-1971 Incl.	1 1/2 Mills	1967-1971 Incl.
Ypsilanti Public Schools District	1968-1971 Incl.	1 1/2 Mills	1967-1971 Incl.
Chelsea Schools District	1968-1971 Incl.	1 1/2 Mills	1967-1971 Incl.
Lincoln Consolidated School District	1968-1971 Incl.	1 1/2 Mills	1967-1971 Incl.
Manchester Public Schools District	1968-1971 Incl.	1 1/2 Mills	1967-1971 Incl.
Milan Area Schools District	1968-1971 Incl.	1 1/2 Mills	1967-1971 Incl.
Saline Area Schools District	1968-1971 Incl.	1 1/2 Mills	1967-1971 Incl.
Whitmore Lake Schools District	1968-1971 Incl.	1 1/2 Mills	1967-1971 Incl.
Willow Run Public Schools District	1968-1971 Incl.	1 1/2 Mills	1967-1971 Incl.
Clinton Community Schools	1968-1971 Incl.	1 1/2 Mills	1967-1971 Incl.
Columbia School District	1968-1971 Incl.	1 1/2 Mills	1967-1971 Incl.
Northville Public School District	1968-1971 Incl.	1 1/2 Mills	1967-1971 Incl.
Pineknob Community Schools District	1968-1971 Incl.	1 1/2 Mills	1967-1971 Incl.
Plymouth Community Schools	1968-1971 Incl.	1 1/2 Mills	1967-1971 Incl.
South Lyon Community School District	1968-1971 Incl.	1 1/2 Mills	1967-1971 Incl.
Stockbridge Community Schools	1968-1971 Incl.	1 1/2 Mills	1967-1971 Incl.
Van Buren Township School District	1968-1971 Incl.	1 1/2 Mills	1967-1971 Incl.

Dated: September 6, 1968

**Notice Relative to Opening and Closing of the Polls**

#### ELECTION LAW, ACT 116, P. A. 1954

SECTION 720. On the day of any election the polls shall be opened at 7 o'clock in the forenoon, and shall be continuously open until 8 o'clock in the afternoon and no longer. Every qualified elector present and in line at the polls at the hour prescribed for the closing thereof shall be allowed to vote.

THE POLLS of said election will be open at 7 o'clock a.m. and will remain open until 8 o'clock p.m. of said day of election.

DUANE LUICK, Township Clerk



**VOLUNTEER CHEST WORKERS:** Approximately 30 of the 47 community women who volunteered to collect donations from homes in their neighborhood were given their collection kits and cards at the Tuesday night organizational meeting of the residents.

## TV Program Features Study of Electrical Appliance Industry

ast Lansing—"Push-Button Living," a thorough examination of the electrical appliance industry, is presented on the season premier of "Your Dollar's Worth" Wednesday, Nov. 6, at 12 noon, and Friday, Nov. 8, at 7 p.m. on WMSB (Channel 10), Michigan State University television.

"Push-Button Living" deals with a very important facet of modern American life—the use of our electrical servants. A whole generation has grown up with such conveniences as television, automatic dishwashers and intelligent stoves. The program points out that most people are reduced to relying on the questionable guarantee of a brand name, simply because they are uninformed about the industry in general.

The program discusses such important topics as guarantees and warranties, safety, high-pressure salesmen, adequate labeling and the possibility of planned obsolescence.

Other WMSB highlights include: "Bluebeard's Castle" gives an

old legend a modern psychological twist on "NET Festival," Sunday, Nov. 3, at 1:30 p.m.

This interpretation of the famous Bluebeard legend widens the scope of the old tale of a rich nobleman who has killed his several former wives.

Bela Bartok's one-act opera for two voices graphically dramatizes Bluebeard's tortuous inner struggle over Judith, his present wife. As she penetrates to his deepest being, Bluebeard must decide if she is to die also.

"Music for the Cello" presents cellist Theo Salzman and pianist Joseph Evans, Sunday, Nov. 3, at 5 p.m.

Compositions featured on the program include Beethoven's "Sonata in C Major, Op. 102, No. 1," and Mozart's "Variations on a Theme."

Salzman is professor of cello at Carnegie Institute of Technology, and Evans is professor of piano at Michigan State.

"The Seagull," a compelling drama by famous Russian playwright Anton Chekhov, is featured on "NET Playhouse," Sunday, Nov. 3, at 11 p.m.

This version of the play, especially produced for television, tells the story of Madame Arkadina, a popular, middle-aged actress, and her lover, Trigorin. A tragic theme is introduced when Trigorin seduces Nina, the fiancée of Madame Arkadina's son Konstantin.

The cast is headed by two leading British players—Pamela Brown and Robert Stephens.

**LATIN AMERICA**—"Revista Latina," a series originally scheduled to premiere earlier this season, has been rescheduled to begin Thursday, Nov. 7, at 7 p.m. and Saturday, Nov. 9, at 1 p.m.

The series follows a magazine format and is broadcast in Spanish, with news, features and entertainment for Latin-American and migrant communities. Several unique features are planned, including a children's tour of migrant camps and the Mexican-American community of Chicago and a television pen pal interchange.

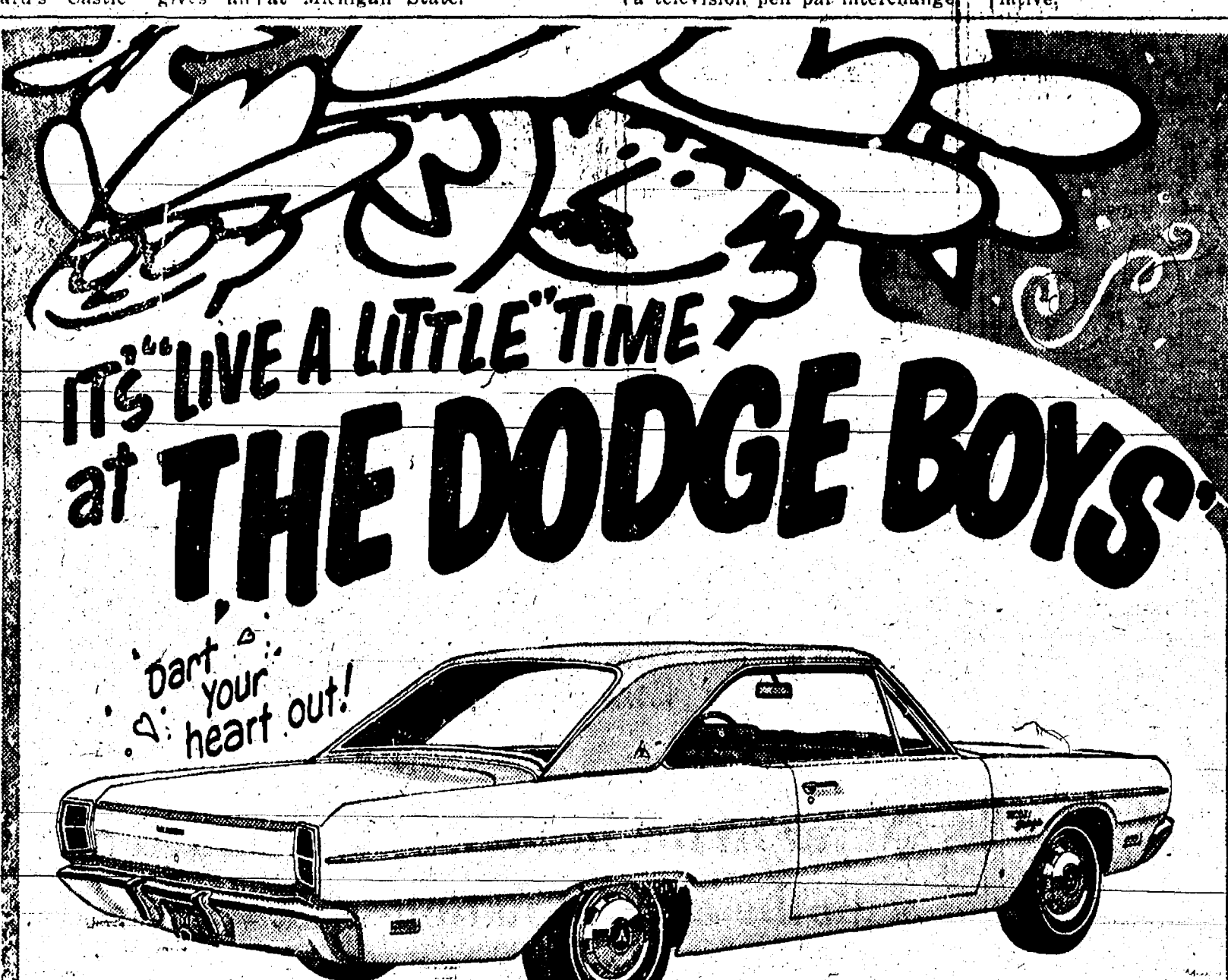
**PEANUTS**—A dialogue about everyone's favorite comic strip is aired on "The Gospel According to Peanuts" Friday, Nov. 8, at 8 p.m.

Robert Short, author of the book, "The Gospel According to Peanuts," meets Charles Shultz, creator of the comic strip, for the first time in a discussion of the theological implications of "Peanuts." The two men compare their separate interpretations of selected cartoons and consider the universal symbolism of Linus and his blanket and other related topics.

**MUSIC**—Charles Greenwell, talented young bass, is featured on "Young Musical Artist," Wednesday, Nov. 6, at 7 p.m.

Greenwell, a MSU graduate, sings works by Purcell, Bizet, Beethoven, Verdi and Saint-Saens. He is accompanied on the piano by Andrew Froehlich, a MSU graduate student.

**DRIVE-IN MORTUARY**—Atlanta-Hirschel Thornton, an Atlanta mortician, is building an extension on his funeral home, which will feature a drive-in window for people to drive by and view the remains of a friend or relative.



Now there's a new way to save at the Dodge Boys'. A swinging, low-priced hardtop. Has all-vinyl seats. Room for six. And as much Six or V8 power as you want. There's even a Swinger 340 model that's the newest member of the Dodge Scat Pack. So if your budget's been keeping you from living it up, you now have the answer. At the Dodge Boys'.

**The Good Guys are turning up the fever now.**

**G. A. SALES & SERVICE**

1185 Manchester Road

Chelsea, Michigan

# GENERAL ELECTION

To the Qualified Electors:

NOTICE IS HEREBY GIVEN,

That a General Election will be held in the

## TOWNSHIP OF DEXTER

(Precinct No. 1)  
County of Washtenaw, State of Michigan

### DEXTER TOWNSHIP HALL

Quigley Road at Dexter Townhall Road  
within said Township on

**TUESDAY, NOVEMBER 5, 1968**

For the Purpose of Electing the Following Officers, viz:

**NATIONAL** President and Vice-President of the United States

**CONGRESSIONAL** Representative in Congress

**LEGISLATIVE** State Representative

**STATE** Two Members of the State Board of Education, Two Regents of the University of Michigan, Two Trustees of Michigan State University, Two Governors of Wayne State University.

**COUNTY** Prosecuting Attorney, Sheriff, County Clerk, County Treasurer, Register of Deeds, Auditor in Counties electing same, Drain Commissioner, Coroners, Surveyor, One County Supervisor from each District, and such other Officers as are elected at that time.

**TOWNSHIP** One Trustee

AND FOR THE PURPOSE OF ELECTING THE FOLLOWING NON-PARTISAN OFFICERS, VIZ:  
Justice of the Supreme Court  
Judge of the Court of Appeals  
Judge of the District Court

AND ALSO TO VOTE ON THE FOLLOWING CONSTITUTIONAL AMENDMENTS:

1. Proposed Amendment to remove the present restriction against the adoption of a Graduated Income Tax.
2. Referendum on Act 6 of the Public Acts of 1967 (Daylight Savings Time).
3. Referendum on Act 76 of the Public Acts of 1968 (Proposal relating to Bonding to Abate Water Pollution).
4. Referendum on Act 257 of the Public Acts of 1968 (Proposal relating to Bonding for Public Recreational Purposes).
5. Proposed Amendment to permit the Election of Members of the Legislature during their term of office to another State Office.

AND ALSO TO VOTE ON THE FOLLOWING COUNTY PROPOSITION:  
"Shall the tax limitation on the total amount of general ad valorem taxes which may be imposed each year for all purposes upon real and tangible personal property in Washtenaw County, Michigan, be increased as provided in Section 6, Article IX of the Constitution of Michigan for a period of three years from (1969-1971) both inclusive by one (1) mill, (one dollar per thousand of State equalized valuation) with the revenue to be allocated to and expended by the Board of County Road Commissioners of the County of Washtenaw exclusively for Highway, road and street purposes to expedite the construction of roads and streets in Washtenaw County?"

#### COUNTY TREASURER'S STATEMENT

(As required by Act 288, Public Acts of Michigan, 1947)  
I, Sylvester A. Leonard, County Treasurer of the County of Washtenaw, State of Michigan, do hereby certify that, according to the records of this Office, as of September 6, 1968, the total of all voted increases in the tax rate limitation, above the 18 mills established taxable property in Washtenaw County, State of Michigan, in said County, is as follows:

Local Unit	County of Washtenaw	Voted Increase	Increase Effective
Ann Arbor Township	1968-1971 Incl.	1 1/2 Mills	1967-1971 Incl.
Augsburg Township	1968-1971 Incl.	1 1/2 Mills	1967-1971 Incl.
Bridgewater Township	1968-1971 Incl.	1 1/2 Mills	1967-1971 Incl.
Dexter Township	1968-1971 Incl.	1 1/2 Mills	1967-1971 Incl.
Freedom Township	1968-1971 Incl.	1 1/2 Mills	1967-1971 Incl.
Lima Township	1968-1971 Incl.	1 1/2 Mills	1967-1971 Incl.
Lodi Township	1968-1971 Incl.	1 1/2 Mills	1967-1971 Incl.
Lyndon Township	1968-1971 Incl.	1 1/2 Mills	1967-1971 Incl.
Manchester Township	1968-1971 Incl.	1 1/2 Mills	1967-1971 Incl.
Northfield Township	1968-1971 Incl.	1 1/2 Mills	1967-1971 Incl.
Salem Township	1968-1971 Incl.	1 1/2 Mills	1967-1971 Incl.
Saline Township	1968-1971 Incl.	1 1/2 Mills	1967-1971 Incl.
Scio Township	1968-1971 Incl.	1 1/2 Mills	1967-1971 Incl.
Sharon Township	1968-1971 Incl.	1 1/2 Mills	1967-1971 Incl.
Superior Township	1968-1971 Incl.	1 1/2 Mills	1967-1971 Incl.
Sylvan Township	1968-1971 Incl.	1 1/2 Mills	1967-1971 Incl.
Webster Township	1968-1971 Incl.	1 1/2 Mills	1967-1971 Incl.
York Township	1968-1971 Incl.	1 1/2 Mills	1967-1971 Incl.
Ypsilanti Township	1968-1971 Incl.	1 1/2 Mills	1967-1971 Incl.
Washtenaw Community College	1968-1971 Incl.	1 1/2 Mills	1967-1971 Incl.
Oakland Community College	1968-1971 Incl.	1 1/2 Mills	1967-1971 Incl.
Schoolcraft Community College	1968-1971 Incl.	1 1/2 Mills	1967-1971 Incl.
Washtenaw County Intermediate School District	1968-1971 Incl.	1 1/2 Mills	1967-1971 Incl.
Ingham County Intermediate School District	1968-1971 Incl.	1 1/2 Mills	1967-1971 Incl.
Jackson County Intermediate School District	1968-1971 Incl.	1 1/2 Mills	1967-1971 Incl.
Lenawee County Intermediate School District	1968-1971 Incl.	1 1/2 Mills	1967-1971 Incl.
Liveston County Intermediate School District	1968-1971 Incl.	1 1/2 Mills	1967-1971 Incl.
Oakland County Intermediate School District	1968-1971 Incl.	1 1/2 Mills	1967-1971 Incl.
Ann Arbor Public Schools District	1968-1971 Incl.	1 1/2 Mills	1967-1971 Incl.
Ypsilanti Public Schools District	1968-1971 Incl.	1 1/2 Mills	1967-1971 Incl.
Chelsea Schools District	1968-1971 Incl.	1 1/2 Mills	1967-1971 Incl.
Lincoln Consolidated School District	1968-1971 Incl.	1 1/2 Mills	1967-1971 Incl.
Manchester Public Schools District	1968-1971 Incl.	1 1/2 Mills	1967-1971 Incl.
Milan Area Schools District	1968-1971 Incl.	1 1/2 Mills	1967-1971 Incl.
Saline Area Schools District	1968-1971 Incl.	1 1/2 Mills	1967-1971 Incl.
Whitmore Lake Schools District	1968-1971 Incl.	1 1/2 Mills	1967-1971 Incl.
Willow Run Public Schools District	1968-1971 Incl.	1 1/2 Mills	1967-1971 Incl.
Clinton Community Schools	1968-1971 Incl.	1 1/2 Mills	1967-1971 Incl.
Columbia School District	1968-1971 Incl.	1 1/2 Mills	1967-1971 Incl.
Northville Public School District	1968-1971 Incl.	1 1/2 Mills	1967-1971 Incl.
Pineknob Community Schools District	1968-1971 Incl.	1 1/2 Mills	1967-1971 Incl.
Plymouth Community Schools	1968-1971 Incl.	1 1/2 Mills	1967-1971 Incl.
South Lyon Community School District	1968-1971 Incl.	1 1/2 Mills	1967-1971 Incl.
Stockbridge Community Schools	1968-1971 Incl.	1 1/2 Mills	1967-1971 Incl.
Van Buren Township School District	1968-1971 Incl.	1 1/2 Mills	1967-1971 Incl.

Dated: September 6, 1968

**Notice Relative to Opening and Closing of the Polls**

#### ELECTION LAW, ACT 116, P. A. 1954

SECTION 720. On the day of any election the polls shall be opened at 7 o'clock in the forenoon, and shall be continuously open until 8 o'clock in the afternoon and no longer. Every qualified elector present and in line at the polls at the hour prescribed for the closing thereof shall be allowed to vote.

THE POLLS of said election will be open at 7 o'clock a.m. and will remain open until 8 o'clock p.m. of said day of election.

WILLIAM EISENBEISER, Township Clerk



Most people judge their fellow-men by the way they accept them and their ideas.

The man who looks at his work isn't need a vacation.

**MEN'S SUIT SALE**  
NOW ON AT DICK BUTLER'S CLOTHING STORE O.P.S. IN GRAND LEDGE.  
**TREMENDOUS SELECTION**  
Our \$50 Suits Now 2 for \$51  
Our \$60 Suits Now 2 for \$61  
Our \$70 Suits Now 2 for \$71

All sizes thru 46. Regulars, Longs and Shorts. If you don't need two suits, bring a friend, divide the cost and share the savings. Michigan Bankard, good at

**DICK BUTLER O.P.S.**  
Opposite Police Station in Grand Ledge, Mich. Open Friday nights till 9. All other nights till 6. Open Sundays 12 to 5.

**MOISTURE BLISTERS PAINT**  
If you notice blistering, peeling, or mildew on exterior or interior of your home, you may have a moisture problem. You can't do anything about high humidity, or precipitation—but there are ways to control sources of moisture in your home. Be sure to have ventilating fans or louvers in high moisture areas, such as kitchens, laundry rooms and bathrooms. Caulk around windows, bases of porches, under eave areas, gutters and downspouts, all woodwork near the ground, and bathtubs.

Even an intelligent man makes a fool of himself about some things.

**GENERAL BUSINESS SERVICES**

Do you have a problem with your business records?  
CALL  
**DON BEACH**  
426-4834

**Electoral College System Being Seriously Questioned**

By Atty.-Gen. Frank J. Kelley  
In this election year the electoral college is having trouble with its students and that makes it similar to a lot of other American colleges.

But trouble is about the only similarity. Many students of the electoral college—United States senators and representatives—want to do away with it altogether. This attitude makes them pretty radical even when compared to other students.

What is this electoral college anyway? How does it work and why do many national leaders want to abolish it?

The framers of the United States Constitution established the electoral college as a method of indirectly electing the president. As originally conceived by them, voters in every state would not vote for president or vice-president at all. Rather, they would vote for a group of persons—known as a college—equal to the total number of senators and representatives that state sent to Washington. The method by which these electors are to be elected is solely a matter of state statute. In Michigan an individual's vote for president is really a vote for a list of electors certified to the secretary of state by the candidate's state party organization.

Originally, these presidential electors were not to be voted for on the basis of party affiliation, but because they had reputation for honesty and good judgment.

If a state had eight representatives and two senators, for example, it then had 10 electoral votes (Michigan has 21) and so would elect 10 presidential electors. The 10 candidates receiving the highest number of votes would be elected. They would then meet in the state capitol on the appointed day in December and debate the qualifications of various persons they felt would make a good president or vice-president. Each elector then cast his vote for two persons—one for president, the other for vice-president. A list was prepared showing the number of votes each candidate received and whether it was for president or vice-president. The list was sealed and sent to the president of the Senate in Washington. The president of the Senate is the incumbent vice-president of the United States.

The president of the Senate would examine the lists from all the states at the same time, and count the votes. This remains unchanged today. The candidate with the majority of all the electoral votes is elected president, and the person with the majority of electoral votes for the office of vice-president is elected vice-president. In case of a failure of any one candidate to achieve a majority of electoral votes for either office the House of Representatives elects a president from the three candidates receiving the highest number of votes. If the election was thrown into the House, each state has only one vote, and a candidate needs a majority—26—to win. Thus, all the newly-elected or recently-elected representatives from each state vote for a candidate among themselves. When they decide on a candidate, their state casts one vote for him. The Senate elects the vice-president on a similar basis, except that they only consider the top two vote-getters, and each Senator casts one vote instead of each state.

The rise of the two-party system in America greatly undermined the working of the electoral college. The political parties began nominating entire slates of electors who ran as a group. If they received the most votes they would all become the presidential electors of that state and would cast their votes for their party's nominees for president and vice-president. So the presidential electors were no longer entrusted by the voters to choose a president and vice-president. Rather, the electors now are party representatives who merely put the official stamp of approval on the two men who receive the majority popular vote in the state.

Thus the original reason for the

electoral college has disappeared. The voters in a particular state now determine who they want to run the nation. Many critics of the electoral college consider popular election of the president and vice-president preferable today to the original system of indirect election.

Since the original intent of the electoral college system has disappeared through practice and principle this should be sufficient reason for an abolition of the system. However, other reasons exist as well, according to the critics of the electoral college:

1. A third-party candidate who receives a sufficient number of electoral votes to deny either of the main party candidates a majority can throw the election into the House of Representatives. Since each state now casts all its electoral votes for only one presidential ticket, throwing the election into the House is easier under the electoral college system than it would be if a presidential candidate only had to receive a certain percentage of the popular vote.

2. The electoral college system as now practiced imposes a type

of "unit rule" on the states in which if a certain candidate receives the majority of the popular vote he receives all of the electoral votes. This effectively deprives those who did not vote for the majority candidate of a voice in the ultimate election of the president.

3. By carrying states with a large electoral vote by a slim majority while his opponent carries smaller states by a wide majority, a candidate could be elected president even though he receives less of the popular vote than his opponent.

4. Once the election reaches the House of Representatives each state participates equally in the elective process regardless of population. The votes of Delaware and Nevada have the same weight as the votes of California or New York. Such a procedure is incompatible with the now-accepted principle of representation according to population.

5. The presidential electors, even though today nominated and elected on the basis of party affiliation, are in no way bound to vote for the candidate who represents their party. This can become a factor in states in which a third-party candidate is very popular. Electors who nominally represent one party and are elected with the understanding that they will vote for that party's candidate may

**Women Tour Birth Defects Center at U-M**

Five Chelsea women, members of the Chelsea Jaycees Auxiliary, attended the Washtenaw County March of Dimes tour through the new birth defects center at the University of Michigan Medical center Oct. 22.

Mrs. Don Proctor, Mrs. Ron Eder, Mrs. Don Doni, Mrs. Art Stelmaw and Mrs. Charles Koenn were introduced to some of the 300 children being treated and saw slides of future plans for a children's treatment center.

The new center is supported partly through funds from the University and March of Dimes.

The automobile driver who takes a chance going around a blind curve will one day meet another driver taking a chance.

Both the party and vote for the third-party candidate, thus disregarding the purpose for which they were elected.

Many proposals have been advanced to replace the electoral college system. Those that appear to have the greatest chance of success say the election of the president should be based on winning the greatest popular vote above a certain minimum percentage of the total vote cast.

**Notice of Change of Hours:**

**SALYERS COLONIAL DINING**

112 E. Middle St., Chelsea

*Enjoy good eating in friendly Early American surroundings.*

Open Monday through Wednesday, 10 a.m. to 9 p.m.

Closed Thursdays

Open Friday and Saturday, 10 a.m. to 10 p.m.

Open Sunday, 8 a.m. to 8 p.m.

OWNED & OPERATED BY  
**JEFF and MARILYN SALYERS**



**RE-ELECT**  
**Patricia Newkirk HARDY**

**REGISTER OF DEEDS**

Republican — 22 Years Experience

**KIWANIS**

**PANCAKE SUPPER**

CHELSEA HIGH SCHOOL CAFEETERIA

**MONDAY NIGHT, NOVEMBER 4**

Serving 5:30 to 8:00 p.m.

*All You Can Eat!*

Pancakes, Sausage, Applesauce, Coffee or Milk.

Adults and Students over 12: \$1.25

Students under 12: 65c

— SPONSORED BY —

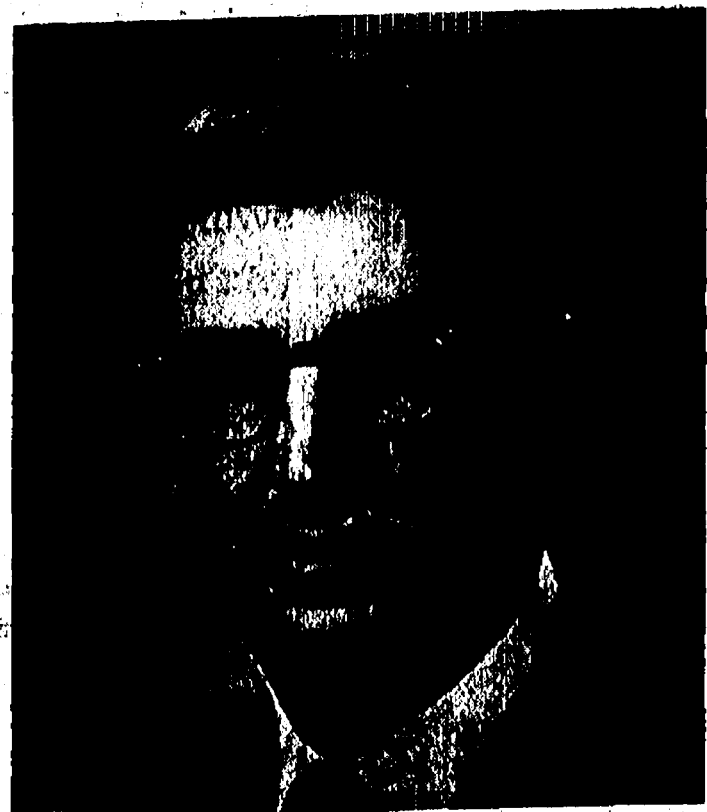
**KIWANIS CLUB OF CHELSEA**

All Proceeds to Chelsea Area Community Projects.

**IF YOU WANT:**

1. Law and Order.
2. Prompt, proper and courteous Handling of all cases.
3. A judge with maturity who will use good judgment and common sense.
4. A judge who is a veteran of U. S. Army and is concerned with present day problems.
5. A judge on District Court from western part of county who will hold court in Chelsea.

**THEN VOTE FOR TOM SHEA FOR DISTRICT JUDGE**



WASHTENAW COUNTY  
ASSISTANT PROSECUTING ATTORNEY  
**THOMAS F. SHEA**

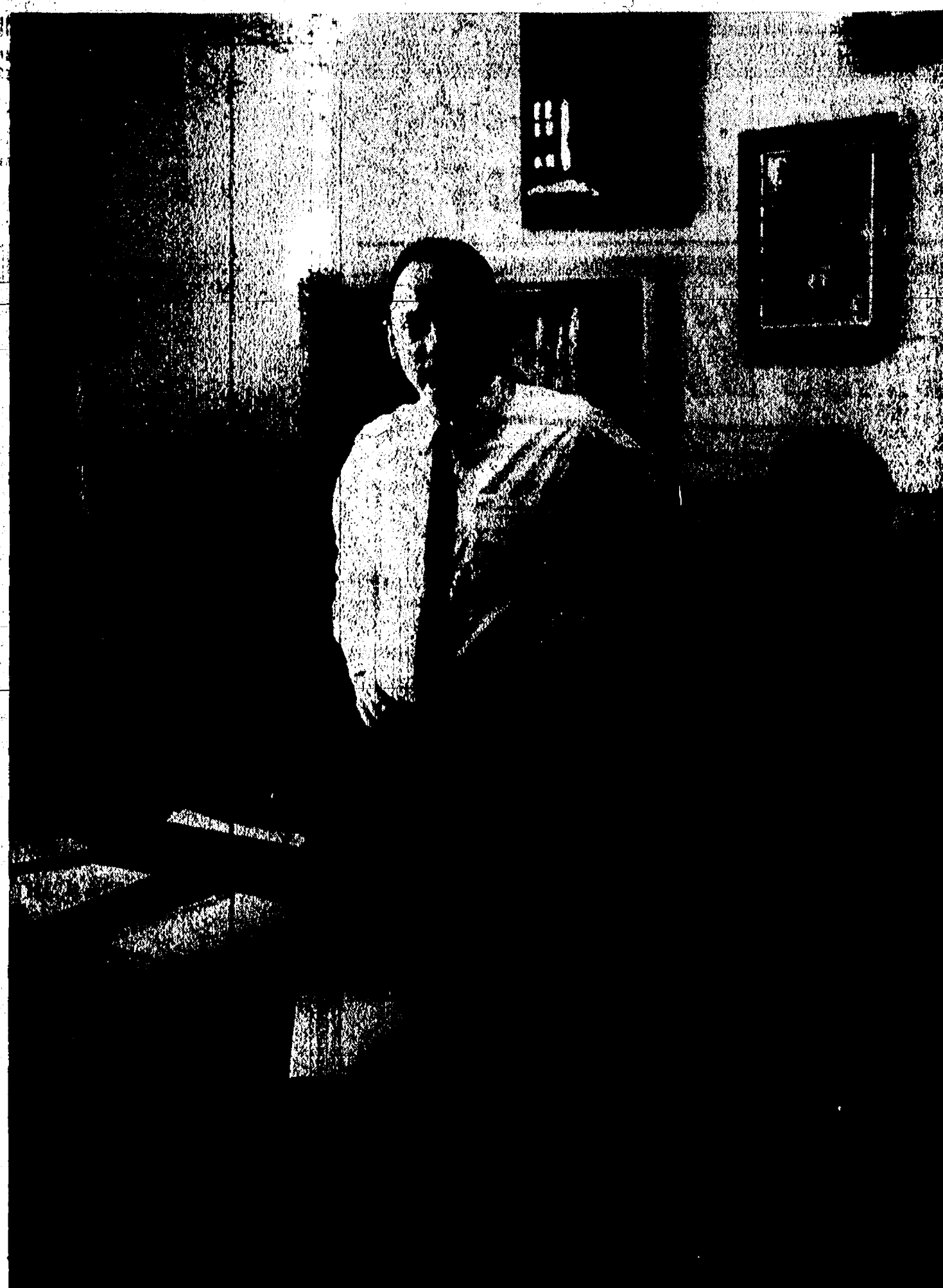
of Dexter, Michigan

13 Years Legal Experience - Father of 4 Children, oldest a student at U-M

**LET'S GET ACTION!**

**VOTE WES VIVIAN**

**U. S. CONGRESS — DEMOCRAT**



Paid for by Citizens for Vivian, Gwan Nyshuen, Treas., Box 1169, Ann Arbor, Mich.



## PIGEONS AND PILLS

Columbia, Mo.—A University of Missouri scientist, Dr. William H. Elder, has perfected birth control pills for pigeons. Food pellets are treated with an antifertility com-

pound. In a seven month test, egg-laying was almost stopped.

There are too many leaders who would rather be smart than be right.

**M-m-m-milk**  
refreshes  
best!



Pour glassfuls of goodness  
with every meal and  
at snacktime too.

Milk's the most when it  
comes to thirst-quenching  
tastiness. Call us today  
for regular home delivery.

Milk is Nature's wonder-food. Drink it daily!

**WEINBERG DAIRY**

QUALITY PASTEURIZED DAIRY PRODUCTS  
OLD US-12 PHONE GR 5-5771

## LEAVES

**Pick-Up Will Continue  
MONDAY, NOV. 4**

Leaves must be raked into the  
street gutters for pick-up by the  
village crews. No pick-up from  
lawn extensions.

**VILLAGE OF CHELSEA**  
PUBLIC WORKS DEPARTMENT

## The Serviceman's Corner

**Donald Dickelman**  
Promoted Aboard Navy  
Destroyer in Far East

Yokosuka, Japan.—Yeoman Third Class Donald L. Dickelman, USN, 23, son of Mr. and Mrs. Edwin M. Dickelman of 253 Harrison St., Chelsea, Mich., was advanced to his present rate while serving aboard the destroyer USS Henry W. Tucker at Yokosuka, Japan.

His advancement was based on time in service and rate, military appearance, performance of duties and passing the Navy-wide test for promotion.

As a unit of the U. S. Seventh Fleet, the destroyer provides Naval gunfire support to U. S. and Allied ground forces in Vietnam. It checks coastal water traffic to prevent shipment of arms and munitions from North to South Vietnam, functions as a plane guard for aircraft carriers and participates in search and rescue operations for downed pilots.

On this, the destroyer's third tour in support of Allied operations in Vietnam, the Henry W. Tucker has received the Anti-Submarine Warfare "A" award. The award was presented the de-

**Ronald A Worden**  
Graduated from Navy  
Hospital Corps School

Great Lakes, Ill.—Hospitalman Apprentice Ronald A. Worden, USN, 19, son of Mr. and Mrs. R. V. Worden of 718 Taylor St., Chelsea, Mich., was graduated from the 14-week basic Hospital Corps School, Great Lakes, Ill.

The school is located at the Naval Training Center here and is designed to train both men and women of the Navy and Coast Guard. Taught by Navy nurses and senior hospital corpsmen, the curriculum covered instruction in patient care, the study of anatomy and physiology, minor surgery, the nature and prevention of communicable diseases, and the administering of medicines.

In addition to attending classes, he worked with doctors and nurses at the Great Lakes Naval Hospital where he put to practical use the knowledge gained in the classroom.

trooper in recognition of having the number one anti-submarine warfare team in Destroyer Squadron Three.

### PROVES INNOCENCE

Fayetteville, Ark.—When a young man returned a book for a friend to the University of Arkansas library on which there was a fine of \$841.55, he had to prove he did not check out the book. The book was checked out in 1941 and he proved he was not born until 1945.

**Pfc. William Snyder**  
Assigned to Artillery  
Unit Serving in Vietnam

U. S. Army, Vietnam.—Army Private, First Class William R. Snyder, 20, son of Mr. and Mrs. William R. Snyder, 1142 Norvell Rd., Grass Lake, Mich., was assigned to the 32nd Artillery Oct. 9 in Vietnam as a generator operator.

His wife, Kathy, lives at 1220 South St., Chelsea, Mich.

### LABOR ON RIOTS

Miami Beach.—ALF-CIO President George Meany told a White House aide that labor leaders pledge full support to the President's multi-billion dollar proposal to create new homes and jobs to head off more rioting in the nation's slums.

### WHO KNOWS?

1. When was the U. S. Mint established?
2. How many senses are there? Name them.
3. When was the U. S. Navy created?
4. The dragon is the emblem of what country?
5. Which was the first state to repeal the 18th (Prohibition) Amendment?
6. What color is saffron?
7. How old is West Point?
8. What does the word "genocide" mean?
9. Who wrote "East is East and West is West"?
10. What does the French word "faux pas" mean?

### TRUCK WAGES HIGH

Trucking employees in 1966 earned an average wage of \$8,303. This was 40.2 percent higher than the average for all private indus-

## INVITATION TO BID

The Village of Chelsea is accepting bids for construction of a Public Works facility to be located on village property on North Street. Plans and specifications may be obtained from the Village Clerk, George Winans, at Winans Jewelry Store. Bids will be accepted until 12:00 o'clock noon (EST) November 5, 1968.

**VILLAGE OF CHELSEA**

GEORGE WINANS CLERK

### 'Who Knows' Answers . . .

1. On April 2, 1792.
2. Five: hearing, sight, touch, smell and taste.
3. On March 27, 1794 by an Act signed by President George Washington.
4. China.
5. Louisiana.
6. Yellow.
7. 168 years old.
8. Race destruction.
9. Rudyard Kipling.
10. False step; social error.

4. China.

5. Louisiana.

6. Yellow.

7. 168 years old.

8. Race destruction.

9. Rudyard Kipling.

10. False step; social error.

(Political Advertisement)

## KEEP A - PROVEN JUDGE ON THE BENCH!

The only candidate  
with  
actual experience  
and a  
proven record  
as a judge.



Municipal Judge  
18 years  
Veteran WW II  
Lifelong  
County Resident

**ELECT -  
JUDGE EDWARD D. DEAKE  
DISTRICT JUDGE**

## VOTERS

**MR. NIXON  
WILL WIN**

**IF YOU  
GET OUT  
THE VOTE!**



"The issue in November is clear. Which presidential candidate can best meet America's urgent need for new direction and leadership. Enthusiastically and without hesitation, I support the Republican nominee Richard M. Nixon . . ."

George Romney, Governor  
State of Michigan

Political analysts consider Michigan to be a pivotal state in this election. You can swing it if you vote and if you get your friends to vote. Do it . . . November 5.

**2nd Congressional District for Nixon Committee**

Lloyd R. Johnson, Treasurer

**NIXON WILL WIN AND SO WILL YOU!**

Be Budget Wise . . . Go Budget-Wise  
For FIRST AID NEEDS

**SPECIAL VALUE!**

70  
assorted  
BANDAGES

**69¢**

Reg. 98c



**NEW - 3 ROLLS IN ONE  
J & J ADHESIVE TAPE**

- 1 ROLL 1 in. x 5 yds. ....
- 1 ROLL 1/2 in. x 5 yds. ....
- 1 ROLL 1/2 in. x 5 yds. ....

ALL  
IN  
ONE

**65¢**

**BUDGET-WISE STORE**

Chelsea's First Discount Store

116 South Main Street

Phone GR 9-1611